

New Mexico State University
27th Annual
Cattle Sale

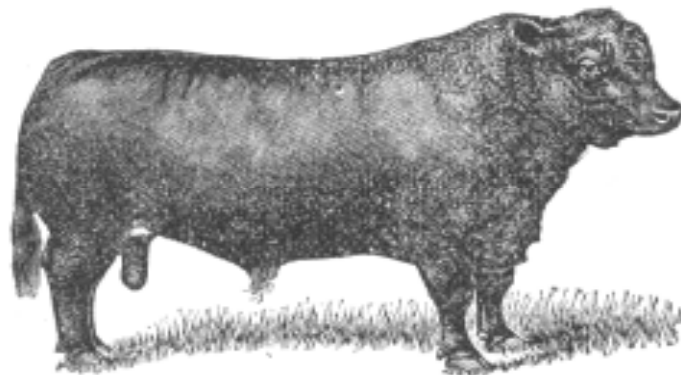
Saturday, April 25, 2009

10:00 am

NMSU Horse Center

400 W. Union

Mesilla Park, NM



March 28, 2009

Dear Cattle Growers and Aggie Supporters,

The 27th Annual NMSU Cattle Sale will offer 44 lots of Angus, Brangus, and Brahman cattle on Saturday, April 25, 2009, 10:00 am at the NMSU Horse Center in Mesilla Park, NM.

NMSU students, faculty, and staff worked hard to offer attractive progeny from the breeding herds of the Corona Range and Livestock Research Center and the Chihuahuan Desert Rangeland Research Center near Las Cruces. Enclosed are performance data, which includes pedigree, EPD, and ultrasound carcass measures. Our genetic selection program is now including efforts from commercial DNA tests as well as genotypes from the NMSU research program. Most importantly, internal study and genetic testing revealed that the NMSU Angus herd is arthrogryposis multiplex free (AMF; i.e., **no mutated genes causing curly calf syndrome**).

We are very happy with the genetic improvement made in the 1st-generation Brangus breeding program involving crosses of NMSU Angus and Brahman cattle. Note the bulls and heifers within the catalogue that are $\frac{1}{4}$ Brahman x $\frac{3}{4}$ Angus. These cattle complement the historic effort of breeding cattle on NMSU Experiment Stations for southwestern rangeland beef production systems.

Cattle descriptions, breeding and management procedures, and video of the offering can be viewed at this website: <http://aces.nmsu.edu/academics/anrs/annual-cattle--horse-sal.html>

Abridged catalogs will be available at the sale and we look forward to seeing everyone.

For additional information contact:

Neil Burcham, 575-646-2309

Milt Thomas, 575-646-3427 or milthoma@nmsu.edu

Terms and Conditions of Sale

- Terms of sale are cash. Payments must be made in full to the cashier immediately following the sale. Make all checks payable to NMSU. Master card, Visa, and Discover Cards will be accepted.
- All registration papers will be mailed complete with signed transfer certificates and breeding certificates (when applicable) directly to the appropriate cattle association for transfer to the new owner. NMSU will pay the cost of transfer. It is the buyer's responsibility to pay his/her own membership within the respective breed association. Please give the clerk the correct name and address of the person to whom the animal is to be transferred.
- The highest bidder is the buyer. If any dispute arises between two or more bidders, advancement of the bid will occur among the disputing bidders. If advancement doesn't occur, the animal shall go to the person whose bid the auctioneer last recognized.
- Bulls will be sold to the highest bidder. A minimum bid of \$800.00 will be accepted on bulls. All heifers will be sold to the highest bidder regardless of the bid.
- The buyer will assume all risks and expense of the animal after the close of the bid by the auctioneer. All bulls have been fertility tested and are guaranteed sound for breeding at time of purchase.
- All effort has been made to insure correctness of the catalog. NMSU and auctioneer will assume no responsibility for errors or omissions. Any known corrections will be made at sale time and take precedence over the catalog.
- All known defects of sale animals will be announced before the bidding begins.
- NMSU is not responsible for injuries sustained by persons attending the sale or by animals after they are sold.
- Animals purchased at this sale will be cared for by the seller, but at the buyer's risk until 6:00 p.m., **Sunday, April 26, 2009.**

An extra thank you goes to:

American Angus Association, St. Joseph, MO

American Brahman Breeders Association, Houston, TX

Camp Cooley Ranch, Franklin, TX

Charles F. Dickerson International Auctioneers, Las Cruces, NM

Elgin Breeders West, Capitan, NM

Flying W Ranch, Ozona, TX

Heart Bar Ranch, Montalba, TX

International Brangus Breeders Association, San Antonio, TX

J.D. Hudgins Corporation, Hungerford, TX

Mound Creek Ranch, Leona, TX

New Mexico Department of Agriculture

Pratt Farms, Maricopa, AZ

Repro-Tech, Las Cruces, NM

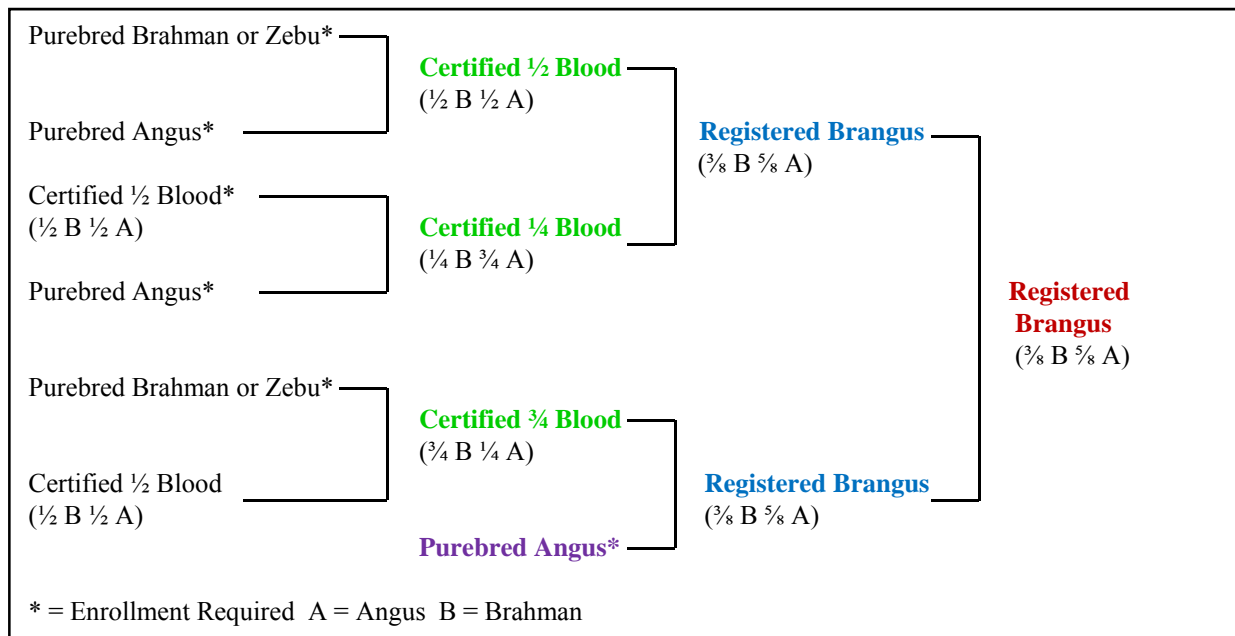
Skip Prichard, DVM, Las Cruces, NM

Southwest Brangus Breeders Association

Townsend Brangus, Milburn, OK

Background and Management Information for the NMSU Angus, Brangus, and Brahman Herds

The Department of Animal and Range Sciences maintains three purebred cattle herds for the purpose of teaching, research, and demonstration. The Angus herd was initiated in 1979. A majority of this herd is maintained at the Corona Range and Livestock Research Center (CRLRC) in central New Mexico under the daily supervision of Shad Cox with the remainder of the herd being maintained at the Chihuahuan Desert Rangeland Research Center (CDRRC) near Las Cruces under the direction of Calvin Bailey. The Brangus herd, initiated in 1966, and the Brahman herd, initiated in 1999, are maintained at the CDRRC. All mature cows in these herds are managed as range cattle with limited supplementation and assistance at calving. Breeding season for the mature cows in the Angus herd at the CRLRC begins May 15 with estrus synchronization and artificial insemination followed by a 45-day clean-up period. Breeding season for mature cows at the CDRRC uses AI and ET, then natural service mating from May 1 to August 1. All heifers from these herds are developed, estrus synchronized, and artificially inseminated on the NMSU campus each spring before being placed with clean-up bulls at the respective research centers. Heifers that become pregnant from this management system return to the NMSU campus to have their first calf under the assistance and observation of the students within the Department of Animal and Range Sciences. Efforts to breed a new line of Brangus was initiated in 2000. The purpose of this new line is to develop Brangus from Angus and Brahman cattle from the desert southwest. We use artificial insemination and embryo transfer to strategically introduce additional genetics into the mating system. This breeding strategy uses the multibreed EPD calculations of International Brangus Breeders Association. First generation animals created in this program carry NMSUL1 preceding their ear tag number. Below are procedures for creating first generation Brangus.



Important Brangus Lingo:

$\frac{1}{2}$ Brahman x $\frac{1}{2}$ Angus = $\frac{1}{2}$ Blood

$\frac{3}{4}$ Brahman x $\frac{1}{4}$ Angus = $\frac{3}{4}$ Blood

$\frac{1}{4}$ Brahman x $\frac{3}{4}$ Angus = $\frac{1}{4}$ Blood

First generation = product of the diagram when the breed fractions = $\frac{3}{8}$ Brahman x $\frac{5}{8}$ Angus

Note: Brahman portion always stated first.

Selection Strategies for NMSU Herds

Selection within the NMSU Angus, Brangus, and Brahman herds is based upon maximizing reproductive efficiency while simultaneously increasing growth performance for herds that provide their own female replacements. Natural service sires are typically selected from within the existing herds using performance and carcass ultrasound data. These sires are also selected based upon calving ease and reproductive performance of their dam and the daughters of their sire. Selection procedure also includes balancing EPD potential for growth and carcass traits and scrotal circumference in coordination with growth performance in the NMSU performance bull test. Artificial insemination sires are selected to bring genetic improvement to the herds and are based upon high accuracy EPDs. Embryo donors are based on longevity of performance and calving intervals of 12 months. All cattle in the Brangus herd are enrolled in the total herd reporting THR system of IBBA.

Cow Superiority Awards

Female superiority is documented in the American Angus Association and International Brangus Breeders Association with the Pathfinder and Summit awards. Requirements for this award include delivered her 1st calf before 25 months of age, maintained a calving interval of one year + 30 days and provided a within herd weaning weight ratio of 105 or greater for her first three calves. These Angus NMSU cows have earned this award: Miss NMSU 706, 901, 135, 247, 239, 261, 361, 415, 445, 545, 743, 853, 883, 889, 938, 0070, 0122 and 1008 and these Brangus cows have earned this award: Miss NMSU 93033, 833, 2014, 2022, 2046, 2092 and 3084. This award is also assigned to sires with daughters who have earned the award. American Brahman Breeders Association assigns these awards as Maternal Merit and we use this information in combination with EPDs when selecting Brahman AI sires.

Bull Test Ration: Formulation for ADG of 3.5 lbs/day

<u>Item</u>	<u>%</u>
Corn	50.5
Alfalfa	37.0
Molasses	10.0
Protein, Vitamin, Mineral - Supplement Cube	2.5
Protein	14.9
Total Digestible Nutrient	75.0

Heifer Ration

Heifers were raised on the NMSU Campus and were fed ground alfalfa and sudan grass with access to mineral.

Inheritance of Color and Polledness in Cattle

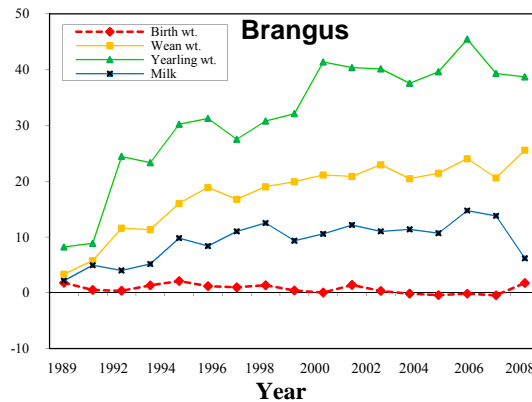
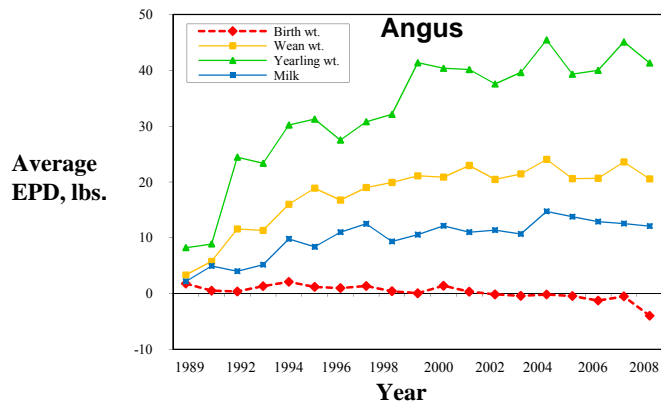
Coat color and polledness/horned in cattle are simple traits controlled by only a few genes with known alleles. For coat color, the black allele is dominant to the red allele. Thus, if an animal is homozygous or heterozygous for the black genotype then phenotype of the animal will be black. The animal would have to be homozygous recessive for the black allele (i.e., carry two copies of the red allele) to be of the red phenotype; however, be aware that there is also a wild-type allele in Brahman cattle, which can contribute brindle and other color patterns in Brahman-influenced cattle.

The polled allele is dominant to the horned allele. *Bos taurus* breeds of cattle such as Angus are polled whereas *Bos indicus* breeds of cattle such as Brahman are horned. There is a separate gene that controls the presence of scurs. Gene expression depends on the sex of the animal and the genotype at the polled-horned locus. The following situations must occur for an animal to be scurred.

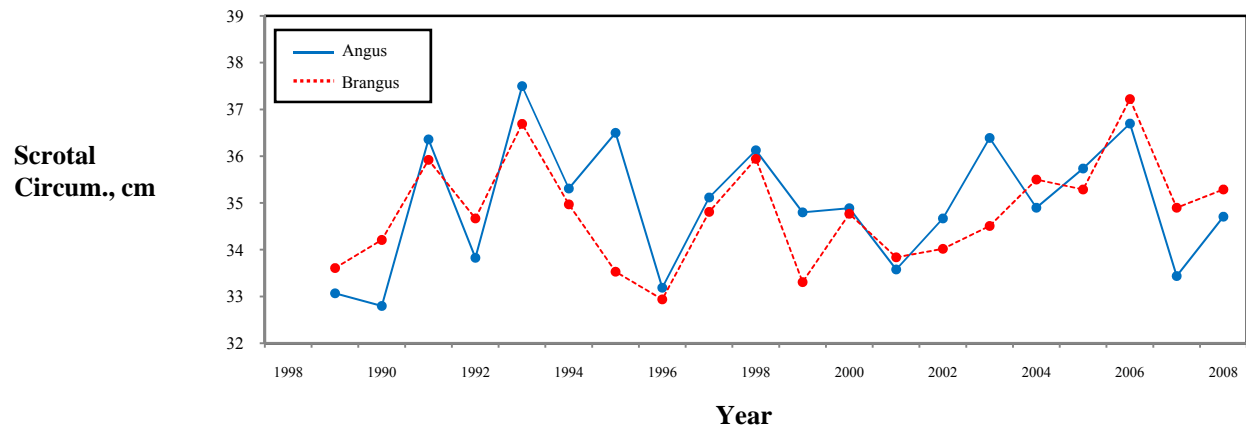
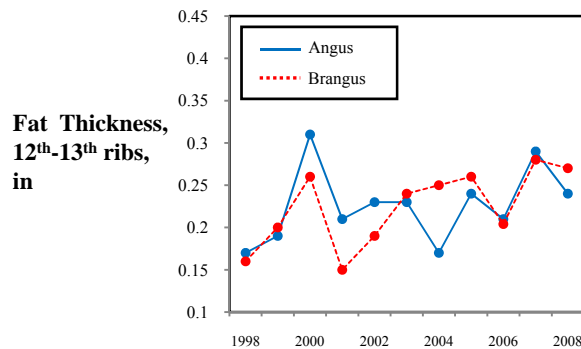
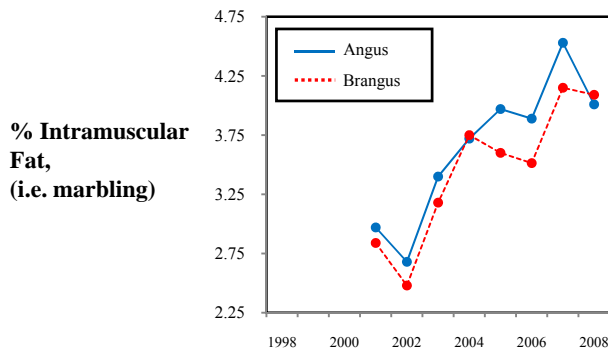
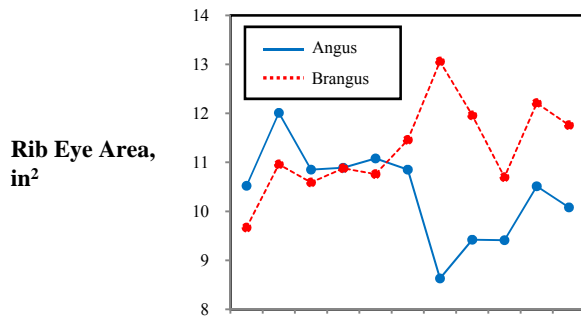
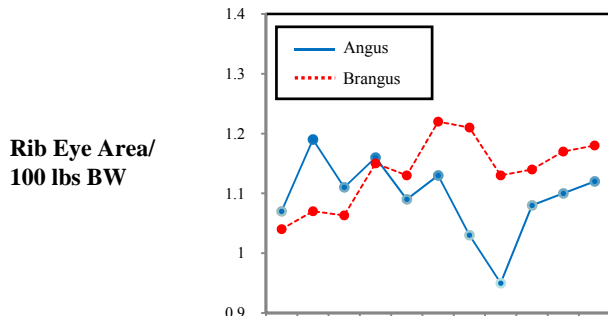
1. In heterozygous polled males, the scurs gene is dominant. This means that the presence of a single scurs allele will cause the bull to be scurred.
2. In heterozygous polled females, the scurs allele is recessive, so a cow must possess two copies of the recessive scurs allele to be scurred. Because of this recessive condition, it is possible for a cow to carry the scurred allele but be of the polled phenotype.

Note: It is possible for scurs to develop into horns by 15 months of age or even later, particularly in heifers.

EPD Trends for Growth & Milk Traits in NMSU Angus and Brangus Bulls



Phenotypic Trends in Carcass Traits and Scrotal Circumference in NMSU Angus and Brangus Yearling Bulls



How to Read the Report

Lot # →	22	NMSU 2091 8101						R10087518	
		Born: 4/17/07	Polled					\$EN ←	
Pedigree		NMSU 2091		NMSU 969				←	
		Miss NMSU 3068		Miss NMSU 0096				←	
				NMSU 866					
				Miss NMSU 9104					
EPD →		CE	BW	WW	YW	MILK	SC	REA	IMF
Accuracy →		3.1	40	56	9	0.2	0.6	-0.01	0.004
Phenotypic Data →		BW	WW	YW	ADG	SC	REA	REA/WT	IMF
Ratio →		72							
		84							

This 112-day performance test is conducted according to the guidelines of the Beef Improvement Federation. website: <http://www.beefimprovement.org>

Yearling Phenotypic Data

- BW** = Adjusted Birth Weight, lbs. If progeny of embryo transfer (ET), weight not reported.
- WW** = 205-day Adjusted Weaning Weight, lbs.
- YW** = 365-day Adjusted Yearling Weight, lbs.
- ADG** = Average Daily Gain, (Final weight - Initial weight ÷ 112 days) expressed as lbs/day.
- SC** = Scrotal Circumference, cm.
- REA** = Ribeye Area, in².
- REA/WT** = (Ribeye Area/112-day weight) x 100; typical beef animal = 1.1.
- IMF** = % Intramuscular Fat of the longissimus muscle (i.e., marbling).
- FT** = Fat over the 12th - 13th ribs, in.

Quality Grade and Marbling Degree based on % IMF:

% IMF	Quality Grade	Marbling Degree
2.3 - 3.0	Select -	Slight 0-40
3.1 - 3.9	Select +	Slight 50-90
4.0 - 5.7	Choice -	Small 0-90
5.8 - 7.6	Choice o	Modest 0-90
7.7 - 9.7	Choice +	Moderate 0-90
9.9 - 12.1	Prime -	Slightly Abundant 0-90
12.3 +	Prime o	Moderately Abundant 0-90

- Ratio** = Comparison of an individual to the average of all other individuals tested within the Angus, Brangus, and Brahman breeds for a particular trait. A ratio of 100 = the average for the breed group tested.
- EPD** = **Expected Progeny Difference**: Numerical value that predicts the expected difference between the average performance of an individual's offspring and the average performance of all progeny within a breed. The accuracy of the EPDs listed for yearling animals are minimal or P, meaning that since the bulls tested do not currently have offspring, their EPDs are based on their parent's EPDs plus their own performance records. (i.e., non-parent EPD).

- Calving Ease Direct (CE)**: Predicts the percentage of unassisted births (higher value is better).
- Birth Weight (BW)**: Predicts calf size.
- Weaning Weight (WW)**: Predicts pre-weaning growth potential.
- Yearling Weight (YW)**: Predicts post-weaning and overall growth potential to 1 year of age.
- Milk**: Predicts the maternal contribution to weaning weight of the calf through milk production.
- Scrotal Circumference (SC)**: Predicts testicular size.
- Total Maternal (TM)**: Predicts weaning weight of calves from a bull's daughter.
- Ribeye Area (REA)**: Predicts size of the longissimus muscle.
- Intramuscular Fat (IMF)**: Predicts fat in longissimus muscle (i.e., marbling).
- Fat Thickness (FT)**: Predicts 12th - 13th rib fat thickness.

\$EN = Cow energy value: dollars savings per cow per year on feed energy expenses (higher value is better).

Angus Sires

Connealy Contrast 15150605
 Born: 2/2/05 Polled \$EN: +7.29

Connealy Danny Boy
 Connealy Timeline
 Energy of Conanga

Doris of Conaga 669
 Rito 616 of 4B20 6807
 Date of Conaga 670B

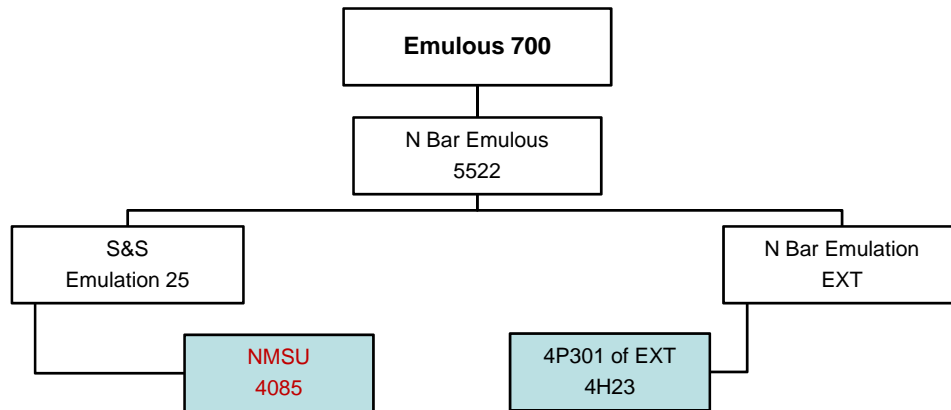
CED	BW	WW	YW	MILK	SC	REA	IMF
+12	-1.3	+41	+88	+14	+0.97	+0.19	+0.41
0.71	0.88	0.81	0.68	0.21	0.65	0.35	0.28

D D A Fahren 21X 12773616
 Born: 2/1/97 Polled \$EN: +33.39

Fahren of Wye Umf 5830
 Fenland of Wye
 Florelle of Wye Umf 5229

D D A Melisa 549
 Carty of Wye Umf 6952
 D D A Melisa 381

CED	BW	WW	YW	MILK	SC	REA	IMF
+10	-2	+28	+49	+11	+0.29	-0.27	-0.06
0.65	0.85	0.80	0.75	0.55	0.71	0.28	0.23



NMSU 4085 14678056
 Born: 2/8/04 Polled \$EN: +20.89

S&S Emulation 25
 Emulation N Bar 5522
 S&S Enechomere 854

Miss NMSU 2140
 NMSU 0001
 Miss NMSU 0044

CED	BW	WW	YW	MILK	SC	REA	IMF
+15	-5.3	+18	+41	+14	-0.24	-0.47	-0.09
0.30	0.45	0.32	0.27	0.13	0.32	0.20	0.18

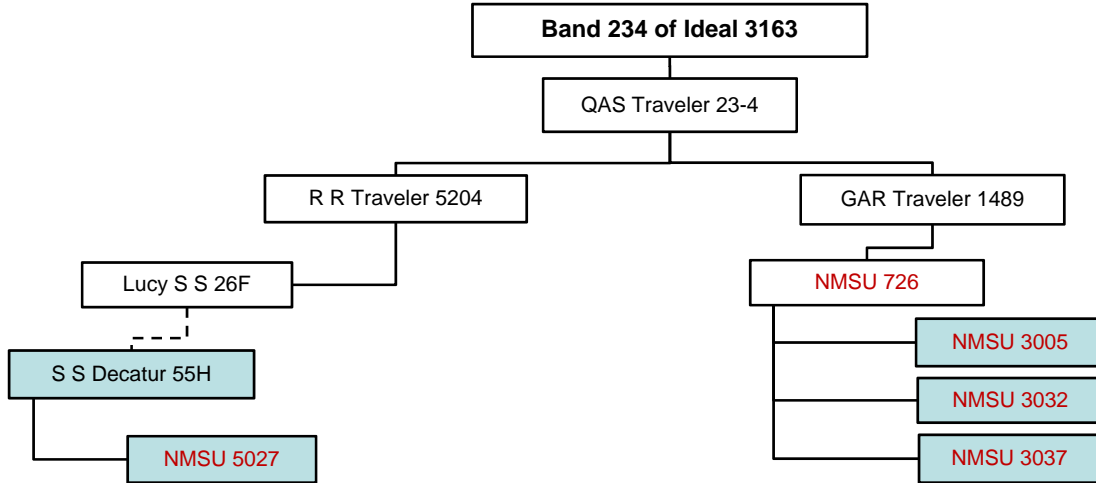
4P301 of EXT 4H23 12119362
 Born: 8/30/93 Polled \$EN: +22.81

N Bar Emulation EXT
 Emulation N Bar 5522
 N Bar Primrose 2424

Rita 4H23 of 1W8 Rito 9J9
 Rito 9J9 of B156 7T26
 Rita 1W8 of 5C883 R36

CED	BW	WW	YW	MILK	SC	REA	IMF
+8	-0.5	+29	+55	+7	+0.17	+0.07	+0.13
0.46	0.76	0.66	0.58	0.38	0.58	0.33	0.28

Angus Sires



S S Decatur 55H 13103836
 Born: 1/20/98 Polled \$EN: +18.28

Sire: S A F Fame
 Dam: Lucy S S 26F

Maternal Grandparents: Minerts Fortune 2000 and S A F Royal Lass 1027
 Paternal Grandparents: R R Traveler 5204 and Lucy S S 18D

CED	BW	WW	YW	MILK	SC	REA	IMF
+10	-0.7	+42	+83	+7	+1.3	-0.03	+0.48
0.74	0.88	0.83	0.77	0.64	0.64	0.60	0.61

NMSU 3005 14393168
 Born: 3/13/03 Polled \$EN: +23.25

Sire: NMSU 726
 Dam: Miss NMSU 873

Maternal Grandparents: G A R Traveler 1489 and Miss NMSU 415
 Paternal Grandparents: NMSU 526 and Miss NMSU 627

CED	BW	WW	YW	MILK	SC	REA	IMF
+16	-5.5	+26	+44	+13	+0.15	-0.23	+0.05
0.30	0.48	0.34	0.32	0.18	0.40	0.20	0.17

NMSU 3037 14393204
 Born: 4/10/03 Polled \$EN: +19.00

Sire: NMSU 726
 Dam: Miss NMSU 940

Maternal Grandparents: G A R Traveler 1489 and Miss NMSU 415
 Paternal Grandparents: Ironwood Impact PP022 and Miss NMSU 527

CED	BW	WW	YW	MILK	SC	REA	IMF
+8	-0.9	+28	+47	+14	+0.8	+0.02	-0.03
0.24	0.36	0.25	0.25	0.15	0.33	0.17	0.15

NMSU 5032 15020012
 Born: 2/24/05 Polled \$EN: +17.53

Sire: NMSU 726
 Dam: Miss NMSU 0080

Maternal Grandparents: G A R Traveler 1489 and Miss NMSU 415
 Paternal Grandparents: NMSU 852 and Miss NMSU 265

CED	BW	WW	YW	MILK	SC	REA	IMF
+17	-4.9	+22	+46	+18	+0.22	-0.21	-0.16
0.26	0.42	0.29	0.23	0.15	0.33	0.19	0.09

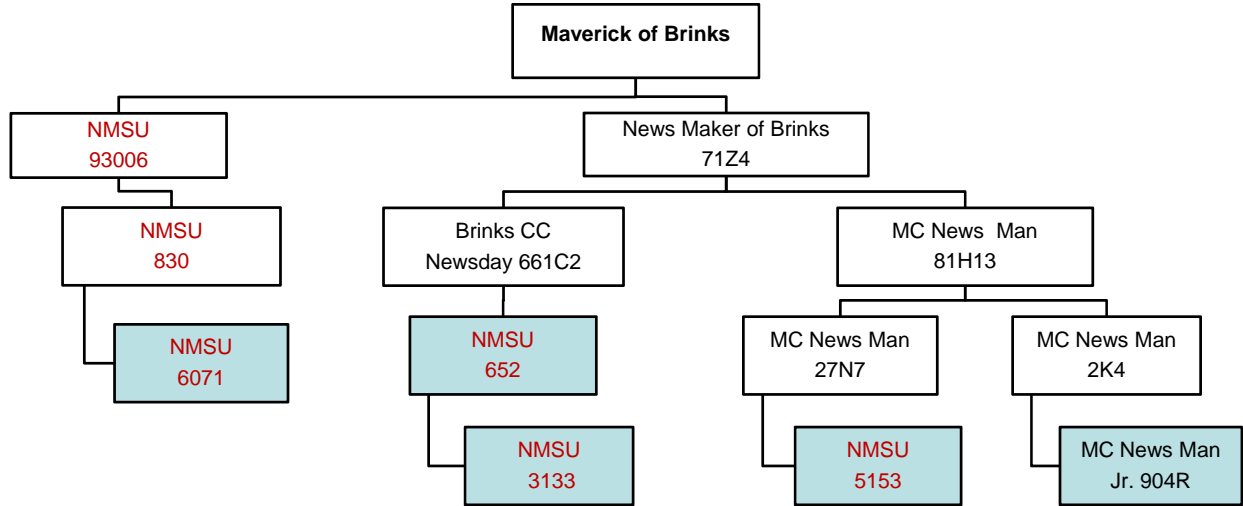
NMSU 5027 15020010
 Born: 2/21/05 Polled \$EN: +18.94

Sire: S S Decatur 55H
 Dam: Miss NMSU 0014

Maternal Grandparents: S A F Fame and Lucy S S 26F
 Paternal Grandparents: NMSU 726 and Miss NMSU 647

CED	BW	WW	YW	MILK	SC	REA	IMF
+13	-3.1	+33	+63	+10	+0.84	-0.14	+0.20
0.27	0.36	0.26	0.26	0.19	0.34	0.23	0.20

Brangus Sires



MC News Man Jr. 904R R10038650
 Born: 2/12/2005 Gen: 4 Polled

MC News Man 2K4
 4T Ms Wendy 904J3

MC News Man 81H13
 MC Ms Freight Train 2H6
 MC Linebacker 457E
 4T Miss John Henry 904/0

BW	WW	YW	MILK	SC	REA	IMF	FT
+2.5	+37	+61	+9	+0.55	+0.33	-0.05	+0.002
0.31	0.30	0.19	0.15	P	0.19	0.16	0.18

NMSU 652 R652525
 Born: 2/3/96 Gen: 3 Polled

Brinks CC News Day 661C2
 Miss NMSU 93067

News Maker of Brinks 71Z4
 Miss BB New Exacto 661A5
 Durango 3172
 Miss NMSU 8846

BW	WW	YW	MILK	SC	REA	IMF	FT
+1.1	+34	+60	+15	+0.2	+0.17	-0.12	-0.002
0.67	0.67	0.58	0.49	0.46	0.47	0.38	0.42

NMSU 3133 R9660966
 Born: 3/16/03 Gen: 4 Polled

NMSU 652
 Miss NMSU 629

Brinks CC News Day 661C2
 Miss NMSU 93067
 Harry Mandate 101B8
 Miss NMSU 94053

BW	WW	YW	MILK	SC	REA	IMF	FT
0	+28	+42	0	+0.6	0	-0.04	-0.006
0.55	0.52	0.35	0.27	0.26	0.31	0.25	0.28

NMSU Newsman 5153 R10019024
 Born: 3/19/05 Gen: 4 Polled

MC News Man 27N7
 Miss NMSU 95015

MC News Man 81H13
 LF Ms Target 27
 DAC Tremor 193-410W
 Miss NMSU 8730

BW	WW	YW	MILK	SC	REA	IMF	FT
-0.8	+8	+30	+8	+0.2	+0.01	+0.08	+0.005
0.30	0.29	0.19	0.17	0.17	0.19	0.14	0.17

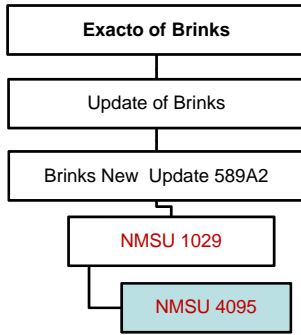
NMSU 830 6071 R10051679
 Born: 2/6/06 Gen: 5 Polled

NMSU 830
 Miss NMSU 2092

NMSU 93006
 Miss NMSU 95003
 NMSU 94004
 Miss NMSU 0156

BW	WW	YW	MILK	SC	REA	IMF	FT
+2.5	+24	+47	+12	+0.9	+0.44	0	+0.007
0.33	0.32	0.22	0.17	0.18	0.18	0.13	0.16

Brangus Sires



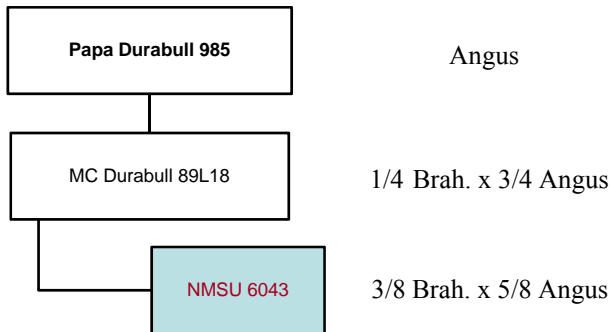
NMSU 4095 Born: 2/16/04 Gen: 5 Polled

Parents: NMSU 1029, Miss NMSU 2046

Grandparents: Brinks New Update 589A2, Miss NMSU 962, NMSU 830, Miss NMSU 9104

BW	WW	YW	MILK	SC	REA	IMF	FT
+1.4	+23	+48	+8	+1.3	+0.24	-0.04	+0.008
0.40	0.39	0.26	0.16	0.19	0.25	0.20	0.15

1st Generation Brangus Sires



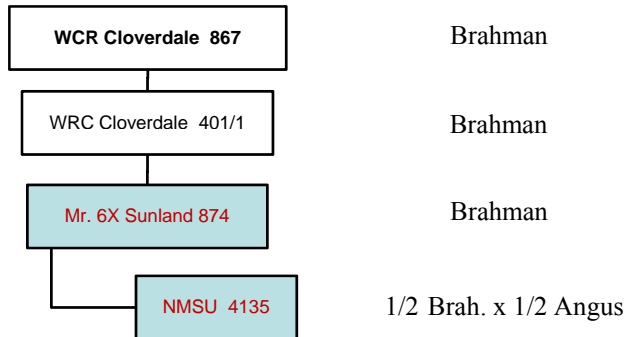
NMSU L1 Durabull 6043 Born: 2/1/2006 Gen: 1 Polled

Parents: MC Durabull 89L18, Miss NMSU L1 3058

Grandparents: Papa Durabull 9805, GLC Ms Hoss 889/Z, NMSU 9105, Miss NMSU 445

BW	WW	YW	MILK	SC	REA	IMF	FT
-2.8	+13	+18	+10	+0.3	+0.02	+0.01	-0.01
0.33	0.33	0.19	0.14	0.14	0.12	0.08	0.10

50% Brahman 50% Angus Sire



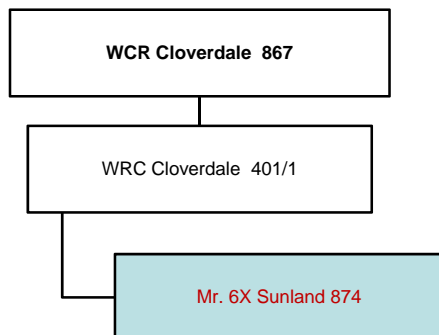
NMSU LI 4135 Born: 3/25/04 Polled

Parents: Mr. 6X Sunland 874, B3R 8178 3091 Elise 211

Grandparents: WRC Cloverdale 401/1, Miss 6X Sunland 495, B3R 813 Rito 3073, B3R 500 Elise 2615

BW	WW	YW	MILK	SC	REA	IMF	FT
+3.2	+28	+31	-2
0.41	0.41	0.21	0.15

Brahman Sire



Mr. 6X Sunland 874 Born: 3/7/98

Parents: WCR Cloverdale 401/1, Miss 6X Sunland 495

Grandparents: WCR Cloverdale 867, CRC Cloverdale 230/1, Sugar's Suville 4, Cotulla of Sugarland 471

BW	WW	YW	MILK	SC	REA	IMF	FT
-1.2	+10.2	+15.8	+5.3
0.58	0.55	0.48	0.36

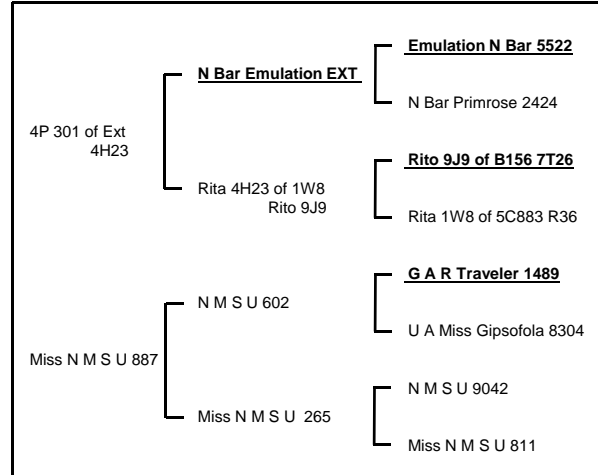
Angus Bulls

Feature Angus Bull

1	NMSU 6035	15416745					
	Born: 2/20/06 Polled	\$EN: +18.85					
<hr/>							
CED	BW	WW	YW	MILK	SC	REA	IMF
+6	+0.9	+28	+47	+13	+0.53	+0.01	+0.16
0.23	0.35	0.25	0.24	0.15	0.31	0.16	0.14
BW	WW	YW	ADG	SC	REA	REA/WT	IMF
77	583	908	2.78	36.5	10.8	1.15	4.88
103	116	103	95	109	118	106	125

Current Wt. = 1430 lbs.

Current SC = 38.0 cm



- Selling full possession and 11/12 interest
- Proven calving ease sire: first 3 calves averaged 63.7 lbs from 1st calf heifers
- DNA verified AMF (curly calf free)

2	NMSU 8017	16190186					
	Born: 3/11/08 Polled	\$EN: +15.81					
<hr/>							
<ul style="list-style-type: none"> NMSU 5032 <ul style="list-style-type: none"> NMSU 726 Miss NMSU 0080 Miss NMSU 3004 <ul style="list-style-type: none"> G A R Traveler 1489 Miss NMSU 0010 							
CED	BW	WW	YW	MILK	SC	REA	IMF
+14	-1.9	+24	+46	+18	+0.40	-0.10	-0.10
0.05	0.24	0.21	0.05	0.11	0.05	0.11	0.09
BW	WW	YW	ADG	SC	REA	REA/WT	IMF
86	554	997	3.19	36	11.4	1.17	3.35
105	108	105	106	104	113	105	84

4	NMSU 8009	16190182					
	Born: 2/25/08 Polled	\$EN: +22.38					
<hr/>							
<ul style="list-style-type: none"> D D A Fahren 21X <ul style="list-style-type: none"> Fahren of Wye Umf 5830 D D A Melisa 549 Miss NMSU 3138 <ul style="list-style-type: none"> NMSU 1003 Miss NMSU 1008 							
CED	BW	WW	YW	MILK	SC	REA	IMF
+10	-1.5	+29	+50	+15	+0.28	-0.23	-0.07
0.05	0.38	0.35	0.05	0.19	0.05	0.11	0.09
BW	WW	YW	ADG	SC	REA	REA/WT	IMF
87	537	983	3.11	33.5	10.1	1.04	3.28
106	105	104	103	97	100	93	82

3	NMSU 8005	16190180					
	Born: 3/3/08 Polled	\$EN: +23.60					
<hr/>							
<ul style="list-style-type: none"> D D A Fahren 21X <ul style="list-style-type: none"> Fahren of Wye Umf 5830 D D A Melisa 549 Miss NMSU 4042 <ul style="list-style-type: none"> NMSU 0001 Miss NMSU 0122 							
CED	BW	WW	YW	MILK	SC	REA	IMF
+11	-1.3	+22	+42	+14	+0.46	-0.25	+0.08
0.05	0.37	0.35	0.05	0.19	0.05	0.11	0.08
BW	WW	YW	ADG	SC	REA	REA/WT	IMF
92	533	996	3.12	38	10.2	1.06	4.59
112	104	105	104	109	101	95	114

Angus Bulls

5	NMSU 8013	16190184																																																
	Born: 3/19/08 Polled	\$EN: +24.31																																																
	<ul style="list-style-type: none"> NMSU 3005 <ul style="list-style-type: none"> NMSU 726 Miss NMSU 873 Miss NMSU 3022 <ul style="list-style-type: none"> NMSU 726 Miss NMSU 883 																																																	
<table border="1"> <thead> <tr> <th>CED</th> <th>BW</th> <th>WW</th> <th>YW</th> <th>MILK</th> <th>SC</th> <th>REA</th> <th>IMF</th> </tr> </thead> <tbody> <tr> <td>+13</td> <td>-5.0</td> <td>+23</td> <td>+39</td> <td>+13</td> <td>+0.28</td> <td>-0.2</td> <td>-0.01</td> </tr> <tr> <td>0.05</td> <td>0.27</td> <td>0.24</td> <td>0.05</td> <td>0.11</td> <td>0.05</td> <td>0.10</td> <td>0.08</td> </tr> <tr> <th>BW</th> <th>WW</th> <th>YW</th> <th>ADG</th> <th>SC</th> <th>REA</th> <th>REA/WT</th> <th>IMF</th> </tr> <tr> <td>70</td> <td>533</td> <td>948</td> <td>2.94</td> <td>36.5</td> <td>10.3</td> <td>1.13</td> <td>4.02</td> </tr> <tr> <td>86</td> <td>104</td> <td>100</td> <td>98</td> <td>105</td> <td>102</td> <td>101</td> <td>100</td> </tr> </tbody> </table>			CED	BW	WW	YW	MILK	SC	REA	IMF	+13	-5.0	+23	+39	+13	+0.28	-0.2	-0.01	0.05	0.27	0.24	0.05	0.11	0.05	0.10	0.08	BW	WW	YW	ADG	SC	REA	REA/WT	IMF	70	533	948	2.94	36.5	10.3	1.13	4.02	86	104	100	98	105	102	101	100
CED	BW	WW	YW	MILK	SC	REA	IMF																																											
+13	-5.0	+23	+39	+13	+0.28	-0.2	-0.01																																											
0.05	0.27	0.24	0.05	0.11	0.05	0.10	0.08																																											
BW	WW	YW	ADG	SC	REA	REA/WT	IMF																																											
70	533	948	2.94	36.5	10.3	1.13	4.02																																											
86	104	100	98	105	102	101	100																																											

9	NMSU 8021	16190188																																																
	Born: 3/17/08 Polled	\$EN: +23.47																																																
	<ul style="list-style-type: none"> NMSU 4085 <ul style="list-style-type: none"> S&S Emulation 25 Miss NMSU 2140 Miss NMSU 4002 <ul style="list-style-type: none"> Gorthy of Graham 18866 Miss NMSU 639 																																																	
<table border="1"> <thead> <tr> <th>CED</th> <th>BW</th> <th>WW</th> <th>YW</th> <th>MILK</th> <th>SC</th> <th>REA</th> <th>IMF</th> </tr> </thead> <tbody> <tr> <td>+14</td> <td>-4.9</td> <td>+16</td> <td>+46</td> <td>+9</td> <td>-0.50</td> <td>-0.31</td> <td>-0.04</td> </tr> <tr> <td>0.05</td> <td>0.26</td> <td>0.22</td> <td>0.05</td> <td>0.1</td> <td>0.05</td> <td>0.09</td> <td>0.07</td> </tr> <tr> <th>BW</th> <th>WW</th> <th>YW</th> <th>ADG</th> <th>SC</th> <th>REA</th> <th>REA/WT</th> <th>IMF</th> </tr> <tr> <td>77</td> <td>410</td> <td>862</td> <td>3.11</td> <td>33.7</td> <td>9.2</td> <td>1.18</td> <td>3.89</td> </tr> <tr> <td>94</td> <td>80</td> <td>91</td> <td>103</td> <td>97</td> <td>91</td> <td>105</td> <td>97</td> </tr> </tbody> </table>			CED	BW	WW	YW	MILK	SC	REA	IMF	+14	-4.9	+16	+46	+9	-0.50	-0.31	-0.04	0.05	0.26	0.22	0.05	0.1	0.05	0.09	0.07	BW	WW	YW	ADG	SC	REA	REA/WT	IMF	77	410	862	3.11	33.7	9.2	1.18	3.89	94	80	91	103	97	91	105	97
CED	BW	WW	YW	MILK	SC	REA	IMF																																											
+14	-4.9	+16	+46	+9	-0.50	-0.31	-0.04																																											
0.05	0.26	0.22	0.05	0.1	0.05	0.09	0.07																																											
BW	WW	YW	ADG	SC	REA	REA/WT	IMF																																											
77	410	862	3.11	33.7	9.2	1.18	3.89																																											
94	80	91	103	97	91	105	97																																											

6	NMSU 8025	16190190																																																
	Born: 3/11/08 Polled	\$EN: +20.10																																																
	<ul style="list-style-type: none"> NMSU 5032 <ul style="list-style-type: none"> NMSU 726 Miss NMSU 0080 Miss NMSU 891 <ul style="list-style-type: none"> NMSU 526 UA Miss Gipsofola 8304 																																																	
<table border="1"> <thead> <tr> <th>CED</th> <th>BW</th> <th>WW</th> <th>YW</th> <th>MILK</th> <th>SC</th> <th>REA</th> <th>IMF</th> </tr> </thead> <tbody> <tr> <td>+13</td> <td>-1.7</td> <td>+16</td> <td>+37</td> <td>+16</td> <td>+0.10</td> <td>-0.27</td> <td>-0.07</td> </tr> <tr> <td>0.05</td> <td>0.27</td> <td>0.24</td> <td>0.05</td> <td>0.11</td> <td>0.05</td> <td>0.09</td> <td>0.07</td> </tr> <tr> <th>BW</th> <th>WW</th> <th>YW</th> <th>ADG</th> <th>SC</th> <th>REA</th> <th>REA/WT</th> <th>IMF</th> </tr> <tr> <td>85</td> <td>480</td> <td>946</td> <td>3.32</td> <td>32.8</td> <td>9.5</td> <td>1.05</td> <td>3.02</td> </tr> <tr> <td>104</td> <td>94</td> <td>100</td> <td>110</td> <td>94</td> <td>94</td> <td>93</td> <td>75</td> </tr> </tbody> </table>			CED	BW	WW	YW	MILK	SC	REA	IMF	+13	-1.7	+16	+37	+16	+0.10	-0.27	-0.07	0.05	0.27	0.24	0.05	0.11	0.05	0.09	0.07	BW	WW	YW	ADG	SC	REA	REA/WT	IMF	85	480	946	3.32	32.8	9.5	1.05	3.02	104	94	100	110	94	94	93	75
CED	BW	WW	YW	MILK	SC	REA	IMF																																											
+13	-1.7	+16	+37	+16	+0.10	-0.27	-0.07																																											
0.05	0.27	0.24	0.05	0.11	0.05	0.09	0.07																																											
BW	WW	YW	ADG	SC	REA	REA/WT	IMF																																											
85	480	946	3.32	32.8	9.5	1.05	3.02																																											
104	94	100	110	94	94	93	75																																											

10	NMSU 8027	16190191																																																
	Born: 4/22/08 Polled	\$EN: +24.07																																																
	<ul style="list-style-type: none"> NMSU 4085 <ul style="list-style-type: none"> S&S Emulation 25 Miss NMSU 2140 Miss NMSU 5040 <ul style="list-style-type: none"> NMSU 3139 Miss NMSU 930 																																																	
<table border="1"> <thead> <tr> <th>CED</th> <th>BW</th> <th>WW</th> <th>YW</th> <th>MILK</th> <th>SC</th> <th>REA</th> <th>IMF</th> </tr> </thead> <tbody> <tr> <td>+11</td> <td>-2.4</td> <td>+17</td> <td>+38</td> <td>+11</td> <td>-0.23</td> <td>-0.33</td> <td>-0.15</td> </tr> <tr> <td>0.05</td> <td>0.25</td> <td>0.22</td> <td>0.05</td> <td>0.07</td> <td>0.05</td> <td>0.05</td> <td>0.05</td> </tr> <tr> <th>BW</th> <th>WW</th> <th>YW</th> <th>ADG</th> <th>SC</th> <th>REA</th> <th>REA/WT</th> <th>IMF</th> </tr> <tr> <td>80</td> <td>447</td> <td>860</td> <td>3.04</td> <td>32.5</td> <td>.</td> <td>.</td> <td>3.91</td> </tr> <tr> <td>98</td> <td>87</td> <td>91</td> <td>101</td> <td>94</td> <td>.</td> <td>.</td> <td>98</td> </tr> </tbody> </table>			CED	BW	WW	YW	MILK	SC	REA	IMF	+11	-2.4	+17	+38	+11	-0.23	-0.33	-0.15	0.05	0.25	0.22	0.05	0.07	0.05	0.05	0.05	BW	WW	YW	ADG	SC	REA	REA/WT	IMF	80	447	860	3.04	32.5	.	.	3.91	98	87	91	101	94	.	.	98
CED	BW	WW	YW	MILK	SC	REA	IMF																																											
+11	-2.4	+17	+38	+11	-0.23	-0.33	-0.15																																											
0.05	0.25	0.22	0.05	0.07	0.05	0.05	0.05																																											
BW	WW	YW	ADG	SC	REA	REA/WT	IMF																																											
80	447	860	3.04	32.5	.	.	3.91																																											
98	87	91	101	94	.	.	98																																											

7	NMSU 8015	16190185																																																
	Born: 3/19/08 Polled	\$EN: +20.98																																																
	<ul style="list-style-type: none"> NMSU 3037 <ul style="list-style-type: none"> NMSU 726 Miss NMSU 940 Miss NMSU 4012 <ul style="list-style-type: none"> NMSU 0001 Miss NMSU 1006 																																																	
<table border="1"> <thead> <tr> <th>CED</th> <th>BW</th> <th>WW</th> <th>YW</th> <th>MILK</th> <th>SC</th> <th>REA</th> <th>IMF</th> </tr> </thead> <tbody> <tr> <td>+9</td> <td>+3</td> <td>+29</td> <td>+46</td> <td>+12</td> <td>+0.47</td> <td>0</td> <td>+0.06</td> </tr> <tr> <td>0.05</td> <td>0.21</td> <td>0.18</td> <td>0.05</td> <td>0.09</td> <td>0.05</td> <td>0.08</td> <td>0.06</td> </tr> <tr> <th>BW</th> <th>WW</th> <th>YW</th> <th>ADG</th> <th>SC</th> <th>REA</th> <th>REA/WT</th> <th>IMF</th> </tr> <tr> <td>97</td> <td>579</td> <td>944</td> <td>2.70</td> <td>34</td> <td>11.5</td> <td>1.28</td> <td>4.19</td> </tr> <tr> <td>119</td> <td>113</td> <td>100</td> <td>90</td> <td>98</td> <td>114</td> <td>114</td> <td>104</td> </tr> </tbody> </table>			CED	BW	WW	YW	MILK	SC	REA	IMF	+9	+3	+29	+46	+12	+0.47	0	+0.06	0.05	0.21	0.18	0.05	0.09	0.05	0.08	0.06	BW	WW	YW	ADG	SC	REA	REA/WT	IMF	97	579	944	2.70	34	11.5	1.28	4.19	119	113	100	90	98	114	114	104
CED	BW	WW	YW	MILK	SC	REA	IMF																																											
+9	+3	+29	+46	+12	+0.47	0	+0.06																																											
0.05	0.21	0.18	0.05	0.09	0.05	0.08	0.06																																											
BW	WW	YW	ADG	SC	REA	REA/WT	IMF																																											
97	579	944	2.70	34	11.5	1.28	4.19																																											
119	113	100	90	98	114	114	104																																											

8	NMSU 8019	16190187																																																
	Born: 3/24/08 Polled	\$EN: +18.71																																																
	<ul style="list-style-type: none"> NMSU 3037 <ul style="list-style-type: none"> NMSU 726 Miss NMSU 940 Miss NMSU 5034 <ul style="list-style-type: none"> NMSU 917 Miss NMSU 1046 																																																	
<table border="1"> <thead> <tr> <th>CED</th> <th>BW</th> <th>WW</th> <th>YW</th> <th>MILK</th> <th>SC</th> <th>REA</th> <th>IMF</th> </tr> </thead> <tbody> <tr> <td>+6</td> <td>+1.9</td> <td>+29</td> <td>+45</td> <td>+15</td> <td>+0.65</td> <td>+0.03</td> <td>+0.07</td> </tr> <tr> <td>0.05</td> <td>0.21</td> <td>0.17</td> <td>0.05</td> <td>0.08</td> <td>0.05</td> <td>0.09</td> <td>0.07</td> </tr> <tr> <th>BW</th> <th>WW</th> <th>YW</th> <th>ADG</th> <th>SC</th> <th>REA</th> <th>REA/WT</th> <th>IMF</th> </tr> <tr> <td>95</td> <td>546</td> <td>936</td> <td>2.69</td> <td>34.5</td> <td>9.8</td> <td>1.26</td> <td>4.82</td> </tr> <tr> <td>116</td> <td>106</td> <td>99</td> <td>89</td> <td>99</td> <td>97</td> <td>112</td> <td>120</td> </tr> </tbody> </table>			CED	BW	WW	YW	MILK	SC	REA	IMF	+6	+1.9	+29	+45	+15	+0.65	+0.03	+0.07	0.05	0.21	0.17	0.05	0.08	0.05	0.09	0.07	BW	WW	YW	ADG	SC	REA	REA/WT	IMF	95	546	936	2.69	34.5	9.8	1.26	4.82	116	106	99	89	99	97	112	120
CED	BW	WW	YW	MILK	SC	REA	IMF																																											
+6	+1.9	+29	+45	+15	+0.65	+0.03	+0.07																																											
0.05	0.21	0.17	0.05	0.08	0.05	0.09	0.07																																											
BW	WW	YW	ADG	SC	REA	REA/WT	IMF																																											
95	546	936	2.69	34.5	9.8	1.26	4.82																																											
116	106	99	89	99	97	112	120																																											

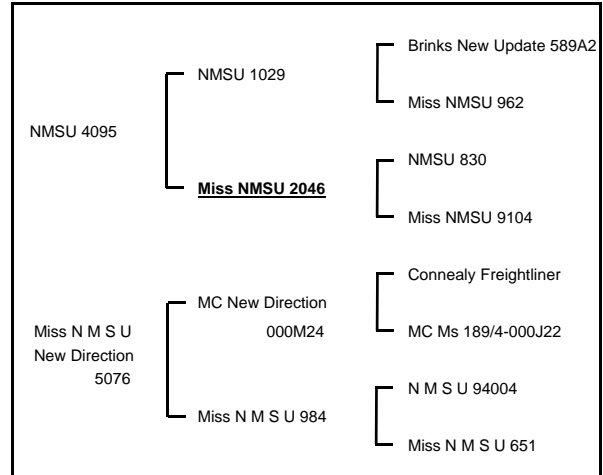
Brangus Bulls

Feature Brangus Bull

11	NMSU 4095 7087	R10087508					
	Born: 3/15/07 Gen: 3 Polled						
BW	WW	YW	MILK	SC	REA	IMF	FT
+0.5	+23	+49	+8	+1.1	+0.27	+0.01	+0.013
0.25	0.25	0.16	0.11	0.13	0.16	0.12	0.13
BW	WW	YW	ADG	SC	REA	REA/WT	IMF
86	696	1183	3.51	35	12.11	1.10	4.34
100	101	105	110	98	99	94	105

Current Wt. = 1294 lbs

Current SC = 36.0 cm



- Outcross pedigree with 1st generation breeding
- Balanced performance
- Top 15% in scrotal circumference EPD
- Rock footed

12	NMSU L1 4135 8105	C10125323					
	Born: 4/6/08 ¼ Brah:¾ An Polled						
	NMSU L1 4135	Mr. 6X Sunland 874					
		B3R 8178 3091 Elise 211					
	Miss U Bar 302	U Bar 159					
		Miss Ryan 184					
BW	WW	YW	MILK	SC	REA	IMF	FT
+1.6	+29	+36	+6
0.21	0.21	0.06	0.07
BW	WW	YW	ADG	SC	REA	REA/WT	IMF
90	667	1024	3.30	33.5	12.40	1.13	3.43
109	114	113	100	93	102	98	80

14	NMSU 4095 8095	R10125270					
	Born: 3/25/08 Gen: 6 Polled						
	NMSU 4095	NMSU 1029					
		Miss NMSU 2046					
	Miss NMSU 4060	NMSU 836					
		Miss NMSU 904					
BW	WW	YW	MILK	SC	REA	IMF	FT
+0.6	+21	+40	+8	+0.72	+0.23	+0.04	+0.005
0.25	0.25	0.12	0.11	P	P	P	P
BW	WW	YW	ADG	SC	REA	REA/WT	IMF
88	625	1116	3.37	34	12.51	1.20	4.74
105	107	107	113	99	107	102	118

13	NMSU 652 8043	R10125264					
	Born: 2/15/08 Gen: 3 Polled						
	NMSU 652	Brinks CC News Day 661C2					
		Miss NMSU 93067					
	Miss NMSU 52M6 5084	MC Cool Hand 52M6					
		Miss NMSU 920					
BW	WW	YW	MILK	SC	REA	IMF	FT
+1.8	+33	+55	+9	+0.17	+0.32	-0.11	-0.003
0.29	0.28	0.18	0.17	P	P	P	P
BW	WW	YW	ADG	SC	REA	REA/WT	IMF
91	628	1161	3.38	38	15.16	1.31	4.05
108	107	112	114	110	130	111	101

15	NMSU 3133 8075	R10125282					
	Born: 3/13/08 Gen: 5 Polled						
	NMSU 3133	NMSU 652					
		Miss NMSU 629					
	Miss NMSU 3084	NMSU 830					
		Miss NMSU 9128					
BW	WW	YW	MILK	SC	REA	IMF	FT
+1.7	+27	+48	+9	+0.53	+0.29	-0.03	+0.003
0.28	0.27	0.14	0.14	P	P	P	P
BW	WW	YW	ADG	SC	REA	REA/WT	IMF
94	603	1111	3.30	38	12.43	1.16	3.57
112	103	107	111	110	107	98	89

Brangus Bulls

16	NMSU 652 8041	R10125263																								
	Born: 2/14/08	Gen: 3 Polled																								
	<ul style="list-style-type: none"> NMSU 652 <ul style="list-style-type: none"> <u>Brinks CC News Day 661C2</u> Miss NMSU 93067 Miss NMSU 52M6 5082 <ul style="list-style-type: none"> MC Cool Hand 52M6 Miss NMSU 904 																									
	<table border="1"> <thead> <tr> <th>BW</th> <th>WW</th> <th>YW</th> <th>MILK</th> <th>SC</th> <th>REA</th> <th>IMF</th> <th>FT</th> </tr> </thead> <tbody> <tr> <td>+1.3</td> <td>+33</td> <td>+53</td> <td>+7</td> <td>+0.24</td> <td>+0.35</td> <td>-0.03</td> <td>+0.001</td> </tr> <tr> <td>0.29</td> <td>0.29</td> <td>0.18</td> <td>0.18</td> <td>P</td> <td>P</td> <td>P</td> <td>P</td> </tr> </tbody> </table>	BW	WW	YW	MILK	SC	REA	IMF	FT	+1.3	+33	+53	+7	+0.24	+0.35	-0.03	+0.001	0.29	0.29	0.18	0.18	P	P	P	P	
BW	WW	YW	MILK	SC	REA	IMF	FT																			
+1.3	+33	+53	+7	+0.24	+0.35	-0.03	+0.001																			
0.29	0.29	0.18	0.18	P	P	P	P																			
	<table border="1"> <thead> <tr> <th>BW</th> <th>WW</th> <th>YW</th> <th>ADG</th> <th>SC</th> <th>REA</th> <th>REA/WT</th> <th>IMF</th> </tr> </thead> <tbody> <tr> <td>95</td> <td>580</td> <td>1099</td> <td>3.55</td> <td>38</td> <td>13.22</td> <td>1.22</td> <td>4.96</td> </tr> <tr> <td>113</td> <td>99</td> <td>106</td> <td>120</td> <td>110</td> <td>114</td> <td>103</td> <td>123</td> </tr> </tbody> </table>	BW	WW	YW	ADG	SC	REA	REA/WT	IMF	95	580	1099	3.55	38	13.22	1.22	4.96	113	99	106	120	110	114	103	123	
BW	WW	YW	ADG	SC	REA	REA/WT	IMF																			
95	580	1099	3.55	38	13.22	1.22	4.96																			
113	99	106	120	110	114	103	123																			

20	NMSU 6043 8113	R10125274																								
	Born: 2/28/08	Gen: 2 Polled																								
	<ul style="list-style-type: none"> NMSU L1 Durabull 6043 <ul style="list-style-type: none"> MC Durabull 89L18 Miss NMSU L1 3058 Miss NMSU L1 4089 6058 <ul style="list-style-type: none"> NMSU L1 4089 Miss NMSU 0042 																									
	<table border="1"> <thead> <tr> <th>BW</th> <th>WW</th> <th>YW</th> <th>MILK</th> <th>SC</th> <th>REA</th> <th>IMF</th> <th>FT</th> </tr> </thead> <tbody> <tr> <td>-3.3</td> <td>+12</td> <td>+17</td> <td>+7</td> <td>+0.15</td> <td>+0.05</td> <td>+0.05</td> <td>-0.006</td> </tr> <tr> <td>0.23</td> <td>0.23</td> <td>0.09</td> <td>0.08</td> <td>P</td> <td>P</td> <td>P</td> <td>P</td> </tr> </tbody> </table>	BW	WW	YW	MILK	SC	REA	IMF	FT	-3.3	+12	+17	+7	+0.15	+0.05	+0.05	-0.006	0.23	0.23	0.09	0.08	P	P	P	P	
BW	WW	YW	MILK	SC	REA	IMF	FT																			
-3.3	+12	+17	+7	+0.15	+0.05	+0.05	-0.006																			
0.23	0.23	0.09	0.08	P	P	P	P																			
	<table border="1"> <thead> <tr> <th>BW</th> <th>WW</th> <th>YW</th> <th>ADG</th> <th>SC</th> <th>REA</th> <th>REA/WT</th> <th>IMF</th> </tr> </thead> <tbody> <tr> <td>68</td> <td>542</td> <td>1053</td> <td>2.91</td> <td>34</td> <td>11.88</td> <td>1.20</td> <td>4.56</td> </tr> <tr> <td>81</td> <td>92</td> <td>101</td> <td>98</td> <td>99</td> <td>102</td> <td>102</td> <td>113</td> </tr> </tbody> </table>	BW	WW	YW	ADG	SC	REA	REA/WT	IMF	68	542	1053	2.91	34	11.88	1.20	4.56	81	92	101	98	99	102	102	113	
BW	WW	YW	ADG	SC	REA	REA/WT	IMF																			
68	542	1053	2.91	34	11.88	1.20	4.56																			
81	92	101	98	99	102	102	113																			

17	NMSU 5153 8073	R10125281																								
	Born: 3/12/08	Gen: 5 Polled																								
	<ul style="list-style-type: none"> NMSU Newsman 5153 <ul style="list-style-type: none"> MC News Man 27N7 Miss NMSU 95015 <u>Miss NMSU 833</u> <ul style="list-style-type: none"> NMSU 652 Miss NMSU 691 																									
	<table border="1"> <thead> <tr> <th>BW</th> <th>WW</th> <th>YW</th> <th>MILK</th> <th>SC</th> <th>REA</th> <th>IMF</th> <th>FT</th> </tr> </thead> <tbody> <tr> <td>+0.4</td> <td>+21</td> <td>+43</td> <td>+10</td> <td>+0.2</td> <td>+0.07</td> <td>+0.06</td> <td>+0.004</td> </tr> <tr> <td>0.25</td> <td>0.25</td> <td>0.12</td> <td>0.14</td> <td>P</td> <td>P</td> <td>P</td> <td>P</td> </tr> </tbody> </table>	BW	WW	YW	MILK	SC	REA	IMF	FT	+0.4	+21	+43	+10	+0.2	+0.07	+0.06	+0.004	0.25	0.25	0.12	0.14	P	P	P	P	
BW	WW	YW	MILK	SC	REA	IMF	FT																			
+0.4	+21	+43	+10	+0.2	+0.07	+0.06	+0.004																			
0.25	0.25	0.12	0.14	P	P	P	P																			
	<table border="1"> <thead> <tr> <th>BW</th> <th>WW</th> <th>YW</th> <th>ADG</th> <th>SC</th> <th>REA</th> <th>REA/WT</th> <th>IMF</th> </tr> </thead> <tbody> <tr> <td>80</td> <td>647</td> <td>1089</td> <td>3.01</td> <td>34</td> <td>12.43</td> <td>1.15</td> <td>3.57</td> </tr> <tr> <td>95</td> <td>110</td> <td>105</td> <td>101</td> <td>99</td> <td>107</td> <td>97</td> <td>89</td> </tr> </tbody> </table>	BW	WW	YW	ADG	SC	REA	REA/WT	IMF	80	647	1089	3.01	34	12.43	1.15	3.57	95	110	105	101	99	107	97	89	
BW	WW	YW	ADG	SC	REA	REA/WT	IMF																			
80	647	1089	3.01	34	12.43	1.15	3.57																			
95	110	105	101	99	107	97	89																			

21	NMSU 5027 8085	C10125285																								
	Born: 3/19/08	¼ Brah:¾ An Scurred																								
	<ul style="list-style-type: none"> NMSU 5027 <ul style="list-style-type: none"> S S Decatur 55H Miss NMSU 0014 Miss NMSU L1 2116 <ul style="list-style-type: none"> NMSU 921 Miss 6X Sunland 948 																									
	<table border="1"> <thead> <tr> <th>BW</th> <th>WW</th> <th>YW</th> <th>MILK</th> <th>SC</th> <th>REA</th> <th>IMF</th> <th>FT</th> </tr> </thead> <tbody> <tr> <td>-4.9</td> <td>+3</td> <td>+1</td> <td>+2</td> <td>.</td> <td>.</td> <td>.</td> <td>.</td> </tr> <tr> <td>0.21</td> <td>0.22</td> <td>0.06</td> <td>0.09</td> <td>.</td> <td>.</td> <td>.</td> <td>.</td> </tr> </tbody> </table>	BW	WW	YW	MILK	SC	REA	IMF	FT	-4.9	+3	+1	+2	0.21	0.22	0.06	0.09	
BW	WW	YW	MILK	SC	REA	IMF	FT																			
-4.9	+3	+1	+2																			
0.21	0.22	0.06	0.09																			
	<table border="1"> <thead> <tr> <th>BW</th> <th>WW</th> <th>YW</th> <th>ADG</th> <th>SC</th> <th>REA</th> <th>REA/WT</th> <th>IMF</th> </tr> </thead> <tbody> <tr> <td>56</td> <td>611</td> <td>1048</td> <td>2.79</td> <td>33.2</td> <td>12.08</td> <td>1.20</td> <td>4.13</td> </tr> <tr> <td>68</td> <td>105</td> <td>98</td> <td>84</td> <td>92</td> <td>100</td> <td>104</td> <td>96</td> </tr> </tbody> </table>	BW	WW	YW	ADG	SC	REA	REA/WT	IMF	56	611	1048	2.79	33.2	12.08	1.20	4.13	68	105	98	84	92	100	104	96	
BW	WW	YW	ADG	SC	REA	REA/WT	IMF																			
56	611	1048	2.79	33.2	12.08	1.20	4.13																			
68	105	98	84	92	100	104	96																			

18	NMSU L1 4135 8087	C10125316																								
	Born: 3/18/08	¼ Brah:¾ An Polled																								
	<ul style="list-style-type: none"> NMSU L1 4135 <ul style="list-style-type: none"> Mr. 6X Sunland 874 B3R 8178 3091 Elise 211 <u>Miss NMSU 883</u> <ul style="list-style-type: none"> NMSU 526 <u>Miss NMSU 445</u> 																									
	<table border="1"> <thead> <tr> <th>BW</th> <th>WW</th> <th>YW</th> <th>MILK</th> <th>SC</th> <th>REA</th> <th>IMF</th> <th>FT</th> </tr> </thead> <tbody> <tr> <td>+2.4</td> <td>+23</td> <td>+27</td> <td>+4</td> <td>.</td> <td>.</td> <td>.</td> <td>.</td> </tr> <tr> <td>0.22</td> <td>0.23</td> <td>0.08</td> <td>0.09</td> <td>.</td> <td>.</td> <td>.</td> <td>.</td> </tr> </tbody> </table>	BW	WW	YW	MILK	SC	REA	IMF	FT	+2.4	+23	+27	+4	0.22	0.23	0.08	0.09	
BW	WW	YW	MILK	SC	REA	IMF	FT																			
+2.4	+23	+27	+4																			
0.22	0.23	0.08	0.09																			
	<table border="1"> <thead> <tr> <th>BW</th> <th>WW</th> <th>YW</th> <th>ADG</th> <th>SC</th> <th>REA</th> <th>REA/WT</th> <th>IMF</th> </tr> </thead> <tbody> <tr> <td>99</td> <td>541</td> <td>1084</td> <td>3.54</td> <td>40</td> <td>11.83</td> <td>1.14</td> <td>3.71</td> </tr> <tr> <td>119</td> <td>93</td> <td>101</td> <td>107</td> <td>111</td> <td>98</td> <td>99</td> <td>86</td> </tr> </tbody> </table>	BW	WW	YW	ADG	SC	REA	REA/WT	IMF	99	541	1084	3.54	40	11.83	1.14	3.71	119	93	101	107	111	98	99	86	
BW	WW	YW	ADG	SC	REA	REA/WT	IMF																			
99	541	1084	3.54	40	11.83	1.14	3.71																			
119	93	101	107	111	98	99	86																			

22	NMSU L1 4135 8057	C10125321																								
	Born: 2/22/08	¼ Brah:¾ An Scurred																								
	<ul style="list-style-type: none"> NMSU L1 4135 <ul style="list-style-type: none"> Mr. 6X Sunland 874 B3R 8178 3091 Elise 211 Miss NMSU 2060 <ul style="list-style-type: none"> NMSU 738 Miss NMSU 529 																									
	<table border="1"> <thead> <tr> <th>BW</th> <th>WW</th> <th>YW</th> <th>MILK</th> <th>SC</th> <th>REA</th> <th>IMF</th> <th>FT</th> </tr> </thead> <tbody> <tr> <td>+0.5</td> <td>+20</td> <td>+25</td> <td>+3</td> <td>.</td> <td>.</td> <td>.</td> <td>.</td> </tr> <tr> <td>0.21</td> <td>0.21</td> <td>0.06</td> <td>0.08</td> <td>.</td> <td>.</td> <td>.</td> <td>.</td> </tr> </tbody> </table>	BW	WW	YW	MILK	SC	REA	IMF	FT	+0.5	+20	+25	+3	0.21	0.21	0.06	0.08	
BW	WW	YW	MILK	SC	REA	IMF	FT																			
+0.5	+20	+25	+3																			
0.21	0.21	0.06	0.08																			
	<table border="1"> <thead> <tr> <th>BW</th> <th>WW</th> <th>YW</th> <th>ADG</th> <th>SC</th> <th>REA</th> <th>REA/WT</th> <th>IMF</th> </tr> </thead> <tbody> <tr> <td>80</td> <td>569</td> <td>1041</td> <td>3.15</td> <td>38.5</td> <td>12.43</td> <td>1.18</td> <td>4.79</td> </tr> <tr> <td>97</td> <td>98</td> <td>100</td> <td>95</td> <td>107</td> <td>102</td> <td>103</td> <td>111</td> </tr> </tbody> </table>	BW	WW	YW	ADG	SC	REA	REA/WT	IMF	80	569	1041	3.15	38.5	12.43	1.18	4.79	97	98	100	95	107	102	103	111	
BW	WW	YW	ADG	SC	REA	REA/WT	IMF																			
80	569	1041	3.15	38.5	12.43	1.18	4.79																			
97	98	100	95	107	102	103	111																			

19	NMSU 6043 8117	R10125276																								
	Born: 3/23/08	Gen: 2 Polled																								
	<ul style="list-style-type: none"> NMSU L1 Durabull 6043 <ul style="list-style-type: none"> MC Durabull 89L18 Miss NMSU L1 3058 Miss NMSU Grid Maker 6044 <ul style="list-style-type: none"> MC Grid Maker 889N14 Miss NMSU 1094 																									
	<table border="1"> <thead> <tr> <th>BW</th> <th>WW</th> <th>YW</th> <th>MILK</th> <th>SC</th> <th>REA</th> <th>IMF</th> <th>FT</th> </tr> </thead> <tbody> <tr> <td>-1.1</td> <td>+22</td> <td>+35</td> <td>+7</td> <td>+0.22</td> <td>+0.18</td> <td>0</td> <td>-0.009</td> </tr> <tr> <td>0.24</td> <td>0.24</td> <td>0.1</td> <td>0.09</td> <td>P</td> <td>P</td> <td>P</td> <td>P</td> </tr> </tbody> </table>	BW	WW	YW	MILK	SC	REA	IMF	FT	-1.1	+22	+35	+7	+0.22	+0.18	0	-0.009	0.24	0.24	0.1	0.09	P	P	P	P	
BW	WW	YW	MILK	SC	REA	IMF	FT																			
-1.1	+22	+35	+7	+0.22	+0.18	0	-0.009																			
0.24	0.24	0.1	0.09	P	P	P	P																			
	<table border="1"> <thead> <tr> <th>BW</th> <th>WW</th> <th>YW</th> <th>ADG</th> <th>SC</th> <th>REA</th> <th>REA/WT</th> <th>IMF</th> </tr> </thead> <tbody> <tr> <td>81</td> <td>561</td> <td>1079</td> <td>3.08</td> <td>36.5</td> <td>11.25</td> <td>1.16</td> <td>3.81</td> </tr> <tr> <td>96</td> <td>96</td> <td>104</td> <td>104</td> <td>106</td> <td>97</td> <td>99</td> <td>95</td> </tr> </tbody> </table>	BW	WW	YW	ADG	SC	REA	REA/WT	IMF	81	561	1079	3.08	36.5	11.25	1.16	3.81	96	96	104	104	106	97	99	95	
BW	WW	YW	ADG	SC	REA	REA/WT	IMF																			
81	561	1079	3.08	36.5	11.25	1.16	3.81																			
96	96	104	104	106	97	99	95																			

23	NMSU L1 5027 8061	R10125267																								
	Born: 2/23/08	Gen: 1 Scurred																								
	<ul style="list-style-type: none"> NMSU 5027 <ul style="list-style-type: none"> S S Decatur 55H Miss NMSU 0014 Miss NMSU L1 4106 <ul style="list-style-type: none"> Mr. 6X Sunland 874 Miss NMSU L1 1082 																									
	<table border="1"> <thead> <tr> <th>BW</th> <th>WW</th> <th>YW</th> <th>MILK</th> <th>SC</th> <th>REA</th> <th>IMF</th> <th>FT</th> </tr> </thead> <tbody> <tr> <td>-1.5</td> <td>+13</td> <td>+15</td> <td>+4</td> <td>.</td> <td>.</td> <td>.</td> <td>.</td> </tr> <tr> <td>0.22</td> <td>0.22</td> <td>0.07</td> <td>0.07</td> <td>.</td> <td>.</td> <td>.</td> <td>.</td> </tr> </tbody> </table>	BW	WW	YW	MILK	SC	REA	IMF	FT	-1.5	+13	+15	+4	0.22	0.22	0.07	0.07	
BW	WW	YW	MILK	SC	REA	IMF	FT																			
-1.5	+13	+15	+4																			
0.22	0.22	0.07	0.07																			
	<table border="1"> <thead> <tr> <th>BW</th> <th>WW</th> <th>YW</th> <th>ADG</th> <th>SC</th> <th>REA</th> <th>REA/WT</th> <th>IMF</th> </tr> </thead> <tbody> <tr> <td>72</td> <td>611</td> <td>1032</td> <td>2.65</td> <td>36.3</td> <td>12.68</td> <td>1.22</td> <td>4.07</td> </tr> <tr> <td>86</td> <td>104</td> <td>99</td> <td>89</td> <td>106</td> <td>109</td> <td>104</td> <td>101</td> </tr> </tbody> </table>	BW	WW	YW	ADG	SC	REA	REA/WT	IMF	72	611	1032	2.65	36.3	12.68	1.22	4.07	86	104	99	89	106	109	104	101	
BW	WW	YW	ADG	SC	REA	REA/WT	IMF																			
72	611	1032	2.65	36.3	12.68	1.22	4.07																			
86	104	99	89	106	109	104	101																			

Brangus Bulls

24	NMSU 3133 8097	R10125271																								
	Born: 3/28/08	Gen: 5 Polled																								
	<ul style="list-style-type: none"> NMSU 3133 <ul style="list-style-type: none"> NMSU 652 Miss NMSU 629 Miss NMSU 2092 <ul style="list-style-type: none"> NMSU 94004 Miss NMSU 0156 																									
	<table border="1"> <thead> <tr> <th>BW</th> <th>WW</th> <th>YW</th> <th>MILK</th> <th>SC</th> <th>REA</th> <th>IMF</th> <th>FT</th> </tr> </thead> <tbody> <tr> <td>+0.1</td> <td>+26</td> <td>+42</td> <td>+7</td> <td>+0.7</td> <td>+0.17</td> <td>-0.03</td> <td>-0.005</td> </tr> <tr> <td>0.28</td> <td>0.28</td> <td>0.15</td> <td>0.16</td> <td>P</td> <td>P</td> <td>P</td> <td>P</td> </tr> </tbody> </table>	BW	WW	YW	MILK	SC	REA	IMF	FT	+0.1	+26	+42	+7	+0.7	+0.17	-0.03	-0.005	0.28	0.28	0.15	0.16	P	P	P	P	
BW	WW	YW	MILK	SC	REA	IMF	FT																			
+0.1	+26	+42	+7	+0.7	+0.17	-0.03	-0.005																			
0.28	0.28	0.15	0.16	P	P	P	P																			
	<table border="1"> <thead> <tr> <th>BW</th> <th>WW</th> <th>YW</th> <th>ADG</th> <th>SC</th> <th>REA</th> <th>REA/WT</th> <th>IMF</th> </tr> </thead> <tbody> <tr> <td>70</td> <td>616</td> <td>1032</td> <td>2.74</td> <td>34</td> <td>11.75</td> <td>1.21</td> <td>3.52</td> </tr> <tr> <td>83</td> <td>105</td> <td>99</td> <td>92</td> <td>99</td> <td>101</td> <td>103</td> <td>88</td> </tr> </tbody> </table>	BW	WW	YW	ADG	SC	REA	REA/WT	IMF	70	616	1032	2.74	34	11.75	1.21	3.52	83	105	99	92	99	101	103	88	
BW	WW	YW	ADG	SC	REA	REA/WT	IMF																			
70	616	1032	2.74	34	11.75	1.21	3.52																			
83	105	99	92	99	101	103	88																			

28	NMSU L1 4135 8055	C10125322																								
	Born: 2/22/08	¼ Brah:¾ An Polled																								
	<ul style="list-style-type: none"> NMSU L1 4135 <ul style="list-style-type: none"> Mr. 6X Sunland 874 B3R 8178 3091 Elise 211 Miss NMSU 3002 <ul style="list-style-type: none"> NMSU 726 Miss NMSU 733 																									
	<table border="1"> <thead> <tr> <th>BW</th> <th>WW</th> <th>YW</th> <th>MILK</th> <th>SC</th> <th>REA</th> <th>IMF</th> <th>FT</th> </tr> </thead> <tbody> <tr> <td>+0.3</td> <td>+19</td> <td>+24</td> <td>+3</td> <td>.</td> <td>.</td> <td>.</td> <td>.</td> </tr> <tr> <td>0.21</td> <td>0.21</td> <td>0.07</td> <td>0.08</td> <td>.</td> <td>.</td> <td>.</td> <td>.</td> </tr> </tbody> </table>	BW	WW	YW	MILK	SC	REA	IMF	FT	+0.3	+19	+24	+3	0.21	0.21	0.07	0.08	
BW	WW	YW	MILK	SC	REA	IMF	FT																			
+0.3	+19	+24	+3																			
0.21	0.21	0.07	0.08																			
	<table border="1"> <thead> <tr> <th>BW</th> <th>WW</th> <th>YW</th> <th>ADG</th> <th>SC</th> <th>REA</th> <th>REA/WT</th> <th>IMF</th> </tr> </thead> <tbody> <tr> <td>86</td> <td>549</td> <td>992</td> <td>3.07</td> <td>38</td> <td>11.27</td> <td>1.13</td> <td>4.29</td> </tr> <tr> <td>104</td> <td>93</td> <td>95</td> <td>93</td> <td>106</td> <td>93</td> <td>99</td> <td>100</td> </tr> </tbody> </table>	BW	WW	YW	ADG	SC	REA	REA/WT	IMF	86	549	992	3.07	38	11.27	1.13	4.29	104	93	95	93	106	93	99	100	
BW	WW	YW	ADG	SC	REA	REA/WT	IMF																			
86	549	992	3.07	38	11.27	1.13	4.29																			
104	93	95	93	106	93	99	100																			

25	NMSU 3133 8099	R10125272																								
	Born: 3/28/08	Gen: 5 Polled																								
	<ul style="list-style-type: none"> NMSU 3133 <ul style="list-style-type: none"> NMSU 652 Miss NMSU 629 Miss NMSU 2062 <ul style="list-style-type: none"> NMSU 836 Miss NMSU 859 																									
	<table border="1"> <thead> <tr> <th>BW</th> <th>WW</th> <th>YW</th> <th>MILK</th> <th>SC</th> <th>REA</th> <th>IMF</th> <th>FT</th> </tr> </thead> <tbody> <tr> <td>+0.7</td> <td>+21</td> <td>+35</td> <td>+5</td> <td>+0.29</td> <td>+0.12</td> <td>+0.06</td> <td>0</td> </tr> <tr> <td>0.28</td> <td>0.27</td> <td>0.15</td> <td>0.15</td> <td>P</td> <td>P</td> <td>P</td> <td>P</td> </tr> </tbody> </table>	BW	WW	YW	MILK	SC	REA	IMF	FT	+0.7	+21	+35	+5	+0.29	+0.12	+0.06	0	0.28	0.27	0.15	0.15	P	P	P	P	
BW	WW	YW	MILK	SC	REA	IMF	FT																			
+0.7	+21	+35	+5	+0.29	+0.12	+0.06	0																			
0.28	0.27	0.15	0.15	P	P	P	P																			
	<table border="1"> <thead> <tr> <th>BW</th> <th>WW</th> <th>YW</th> <th>ADG</th> <th>SC</th> <th>REA</th> <th>REA/WT</th> <th>IMF</th> </tr> </thead> <tbody> <tr> <td>82</td> <td>585</td> <td>1023</td> <td>2.76</td> <td>34.5</td> <td>11.50</td> <td>1.20</td> <td>4.62</td> </tr> <tr> <td>98</td> <td>100</td> <td>98</td> <td>93</td> <td>100</td> <td>99</td> <td>101</td> <td>115</td> </tr> </tbody> </table>	BW	WW	YW	ADG	SC	REA	REA/WT	IMF	82	585	1023	2.76	34.5	11.50	1.20	4.62	98	100	98	93	100	99	101	115	
BW	WW	YW	ADG	SC	REA	REA/WT	IMF																			
82	585	1023	2.76	34.5	11.50	1.20	4.62																			
98	100	98	93	100	99	101	115																			

29	NMSU 6071 8065	R10125268																								
	Born: 3/3/08	Gen: 5 Polled																								
	<ul style="list-style-type: none"> NMSU 8306071 <ul style="list-style-type: none"> NMSU 830 Miss NMSU 2092 Miss NMSU 902 <ul style="list-style-type: none"> Brinks CC Big Easy 54D Miss NMSU 775 																									
	<table border="1"> <thead> <tr> <th>BW</th> <th>WW</th> <th>YW</th> <th>MILK</th> <th>SC</th> <th>REA</th> <th>IMF</th> <th>FT</th> </tr> </thead> <tbody> <tr> <td>+0.5</td> <td>+15</td> <td>+30</td> <td>+10</td> <td>+0.7</td> <td>+0.2</td> <td>+0.04</td> <td>+0.002</td> </tr> <tr> <td>0.26</td> <td>0.25</td> <td>0.12</td> <td>0.14</td> <td>P</td> <td>P</td> <td>P</td> <td>P-</td> </tr> </tbody> </table>	BW	WW	YW	MILK	SC	REA	IMF	FT	+0.5	+15	+30	+10	+0.7	+0.2	+0.04	+0.002	0.26	0.25	0.12	0.14	P	P	P	P-	
BW	WW	YW	MILK	SC	REA	IMF	FT																			
+0.5	+15	+30	+10	+0.7	+0.2	+0.04	+0.002																			
0.26	0.25	0.12	0.14	P	P	P	P-																			
	<table border="1"> <thead> <tr> <th>BW</th> <th>WW</th> <th>YW</th> <th>ADG</th> <th>SC</th> <th>REA</th> <th>REA/WT</th> <th>IMF</th> </tr> </thead> <tbody> <tr> <td>98</td> <td>576</td> <td>986</td> <td>2.94</td> <td>35.5</td> <td>12.00</td> <td>1.21</td> <td>3.66</td> </tr> <tr> <td>117</td> <td>98</td> <td>95</td> <td>99</td> <td>103</td> <td>103</td> <td>103</td> <td>91</td> </tr> </tbody> </table>	BW	WW	YW	ADG	SC	REA	REA/WT	IMF	98	576	986	2.94	35.5	12.00	1.21	3.66	117	98	95	99	103	103	103	91	
BW	WW	YW	ADG	SC	REA	REA/WT	IMF																			
98	576	986	2.94	35.5	12.00	1.21	3.66																			
117	98	95	99	103	103	103	91																			

26	NMSU L1 5027 8037	C10125262																								
	Born: 2/5/08	¼ Brah:¾ An Scurred																								
	<ul style="list-style-type: none"> NMSU 5027 <ul style="list-style-type: none"> S S Decatur 55H Miss NMSU 0014 Miss NMSU L1 3062 <ul style="list-style-type: none"> NMSU 9105 Miss NMSU 433 																									
	<table border="1"> <thead> <tr> <th>BW</th> <th>WW</th> <th>YW</th> <th>MILK</th> <th>SC</th> <th>REA</th> <th>IMF</th> <th>FT</th> </tr> </thead> <tbody> <tr> <td>-2.9</td> <td>+8</td> <td>+12</td> <td>+3</td> <td>.</td> <td>.</td> <td>.</td> <td>.</td> </tr> <tr> <td>0.22</td> <td>0.14</td> <td>0.06</td> <td>0.08</td> <td>.</td> <td>.</td> <td>.</td> <td>.</td> </tr> </tbody> </table>	BW	WW	YW	MILK	SC	REA	IMF	FT	-2.9	+8	+12	+3	0.22	0.14	0.06	0.08	
BW	WW	YW	MILK	SC	REA	IMF	FT																			
-2.9	+8	+12	+3																			
0.22	0.14	0.06	0.08																			
	<table border="1"> <thead> <tr> <th>BW</th> <th>WW</th> <th>YW</th> <th>ADG</th> <th>SC</th> <th>REA</th> <th>REA/WT</th> <th>IMF</th> </tr> </thead> <tbody> <tr> <td>74</td> <td>559</td> <td>1020</td> <td>3.30</td> <td>36</td> <td>13.28</td> <td>1.23</td> <td>5.34</td> </tr> <tr> <td>89</td> <td>96</td> <td>96</td> <td>100</td> <td>100</td> <td>109</td> <td>107</td> <td>124</td> </tr> </tbody> </table>	BW	WW	YW	ADG	SC	REA	REA/WT	IMF	74	559	1020	3.30	36	13.28	1.23	5.34	89	96	96	100	100	109	107	124	
BW	WW	YW	ADG	SC	REA	REA/WT	IMF																			
74	559	1020	3.30	36	13.28	1.23	5.34																			
89	96	96	100	100	109	107	124																			

30	NMSU 4095 8069	R10125269																								
	Born: 3/10/08	Gen: 6 Polled																								
	<ul style="list-style-type: none"> NMSU 4095 <ul style="list-style-type: none"> NMSU 1029 Miss NMSU 2046 Miss NMSU 4056 <ul style="list-style-type: none"> NMSU 2091 Miss NMSU 1098 																									
	<table border="1"> <thead> <tr> <th>BW</th> <th>WW</th> <th>YW</th> <th>MILK</th> <th>SC</th> <th>REA</th> <th>IMF</th> <th>FT</th> </tr> </thead> <tbody> <tr> <td>0</td> <td>+20</td> <td>+40</td> <td>+5</td> <td>+0.75</td> <td>+0.16</td> <td>-0.08</td> <td>+0.002</td> </tr> <tr> <td>0.25</td> <td>0.25</td> <td>0.12</td> <td>0.11</td> <td>P</td> <td>P</td> <td>P</td> <td>P</td> </tr> </tbody> </table>	BW	WW	YW	MILK	SC	REA	IMF	FT	0	+20	+40	+5	+0.75	+0.16	-0.08	+0.002	0.25	0.25	0.12	0.11	P	P	P	P	
BW	WW	YW	MILK	SC	REA	IMF	FT																			
0	+20	+40	+5	+0.75	+0.16	-0.08	+0.002																			
0.25	0.25	0.12	0.11	P	P	P	P																			
	<table border="1"> <thead> <tr> <th>BW</th> <th>WW</th> <th>YW</th> <th>ADG</th> <th>SC</th> <th>REA</th> <th>REA/WT</th> <th>IMF</th> </tr> </thead> <tbody> <tr> <td>82</td> <td>602</td> <td>957</td> <td>2.88</td> <td>34.5</td> <td>11.60</td> <td>1.24</td> <td>3.49</td> </tr> <tr> <td>98</td> <td>103</td> <td>92</td> <td>97</td> <td>100</td> <td>100</td> <td>105</td> <td>87</td> </tr> </tbody> </table>	BW	WW	YW	ADG	SC	REA	REA/WT	IMF	82	602	957	2.88	34.5	11.60	1.24	3.49	98	103	92	97	100	100	105	87	
BW	WW	YW	ADG	SC	REA	REA/WT	IMF																			
82	602	957	2.88	34.5	11.60	1.24	3.49																			
98	103	92	97	100	100	105	87																			

27	NMSU 3133 8093	R10125286																								
	Born: 3/23/08	Gen: 5 Polled																								
	<ul style="list-style-type: none"> NMSU 3133 <ul style="list-style-type: none"> NMSU 652 Miss NMSU 629 Miss NMSU 2046 <ul style="list-style-type: none"> NMSU 830 Miss NMSU 9104 																									
	<table border="1"> <thead> <tr> <th>BW</th> <th>WW</th> <th>YW</th> <th>MILK</th> <th>SC</th> <th>REA</th> <th>IMF</th> <th>FT</th> </tr> </thead> <tbody> <tr> <td>+1.3</td> <td>+29</td> <td>+46</td> <td>+5</td> <td>+0.8</td> <td>+0.17</td> <td>-0.05</td> <td>-0.001</td> </tr> <tr> <td>0.28</td> <td>0.28</td> <td>0.15</td> <td>0.15</td> <td>P</td> <td>P</td> <td>P</td> <td>P</td> </tr> </tbody> </table>	BW	WW	YW	MILK	SC	REA	IMF	FT	+1.3	+29	+46	+5	+0.8	+0.17	-0.05	-0.001	0.28	0.28	0.15	0.15	P	P	P	P	
BW	WW	YW	MILK	SC	REA	IMF	FT																			
+1.3	+29	+46	+5	+0.8	+0.17	-0.05	-0.001																			
0.28	0.28	0.15	0.15	P	P	P	P																			
	<table border="1"> <thead> <tr> <th>BW</th> <th>WW</th> <th>YW</th> <th>ADG</th> <th>SC</th> <th>REA</th> <th>REA/WT</th> <th>IMF</th> </tr> </thead> <tbody> <tr> <td>88</td> <td>627</td> <td>1010</td> <td>2.46</td> <td>35.5</td> <td>11.04</td> <td>1.14</td> <td>4.02</td> </tr> <tr> <td>105</td> <td>107</td> <td>97</td> <td>83</td> <td>103</td> <td>95</td> <td>97</td> <td>100</td> </tr> </tbody> </table>	BW	WW	YW	ADG	SC	REA	REA/WT	IMF	88	627	1010	2.46	35.5	11.04	1.14	4.02	105	107	97	83	103	95	97	100	
BW	WW	YW	ADG	SC	REA	REA/WT	IMF																			
88	627	1010	2.46	35.5	11.04	1.14	4.02																			
105	107	97	83	103	95	97	100																			

31	NMSU 3133 8059	R10125266																								
	Born: 2/20/08	Gen: 5 Polled																								
	<ul style="list-style-type: none"> NMSU 3133 <ul style="list-style-type: none"> NMSU 652 Miss NMSU 629 Miss NMSU 4080 <ul style="list-style-type: none"> NMSU 1029 Miss NMSU 2062 																									
	<table border="1"> <thead> <tr> <th>BW</th> <th>WW</th> <th>YW</th> <th>MILK</th> <th>SC</th> <th>REA</th> <th>IMF</th> <th>FT</th> </tr> </thead> <tbody> <tr> <td>-0.9</td> <td>+11</td> <td>+25</td> <td>+3</td> <td>+0.63</td> <td>+0.13</td> <td>+0.03</td> <td>+0.002</td> </tr> <tr> <td>0.27</td> <td>0.26</td> <td>0.14</td> <td>0.12</td> <td>P</td> <td>P</td> <td>P</td> <td>P</td> </tr> </tbody> </table>	BW	WW	YW	MILK	SC	REA	IMF	FT	-0.9	+11	+25	+3	+0.63	+0.13	+0.03	+0.002	0.27	0.26	0.14	0.12	P	P	P	P	
BW	WW	YW	MILK	SC	REA	IMF	FT																			
-0.9	+11	+25	+3	+0.63	+0.13	+0.03	+0.002																			
0.27	0.26	0.14	0.12	P	P	P	P																			
	<table border="1"> <thead> <tr> <th>BW</th> <th>WW</th> <th>YW</th> <th>ADG</th> <th>SC</th> <th>REA</th> <th>REA/WT</th> <th>IMF</th> </tr> </thead> <tbody> <tr> <td>72</td> <td>470</td> <td>931</td> <td>3.03</td> <td>32.5</td> <td>10.25</td> <td>1.12</td> <td>3.81</td> </tr> <tr> <td>86</td> <td>80</td> <td>89</td> <td>102</td> <td>94</td> <td>88</td> <td>95</td> <td>95</td> </tr> </tbody> </table>	BW	WW	YW	ADG	SC	REA	REA/WT	IMF	72	470	931	3.03	32.5	10.25	1.12	3.81	86	80	89	102	94	88	95	95	
BW	WW	YW	ADG	SC	REA	REA/WT	IMF																			
72	470	931	3.03	32.5	10.25	1.12	3.81																			
86	80	89	102	94	88	95	95																			

Brangus Bulls

32	NMSU 6071 8083		R10125284				
	Born: 3/17/08		Gen: 6 Polled				
NMSU 830 6071		NMSU 830		<u>Miss NMSU 2092</u>			
Miss NMSU 984		NMSU 94004		Miss NMSU 651			
BW	WW	YW	MILK	SC	REA	IMF	FT
+1	+15	+32	+6	+0.65	+0.29	+0.03	+0.004
0.26	0.25	0.12	0.14	P	P	P	P
BW	WW	YW	ADG	SC	REA	REA/WT	IMF
88	486	887	2.76	35.5	9.74	1.13	3.94
105	83	85	93	103	84	96	98

Brahman Bull

33	NMSU 6X Sunland 7061		862755				
	Born: 2/12/07		Gray Horned				
BW	WW	YW	MILK	SC	REA	IMF	FT
-0.1	+9.5	+15.4	+5.6
0.33	0.29	0.24	0.14
BW	WW	YW	ADG	SC	REA	REA/WT	IMF
84	641	1010	2.71	32.5	12.00	1.15	3.86
99	97	94	85	103	86	92	84

Current Wt. = 1320 lbs.

Current SC = 40.5 cm

Mr. 6X Sunland 874	Cloverdale 401/1	WRC Cloverdale 867
		CRC Cloverdale 230/1
Miss 6X Sunland 495	Sugar's Suville 4	Cotulla of Sugarland 471
		<u>JDH Madison De Manso</u>
MSP Lady GIno Mulhim 735	JDH Sir Gino Manso	JDH Lady Vi H Manso
		MSP Mr. Mulhim Manso 387
MSP Miss Mulhim Atari	MSP Miss Atari Sugar 345	

Below is a table of data from a subset of bulls evaluated in the New Mexico State University campus bull test from weaning to yearling (2004 to 2007). Mr. 6X Sunland 874 (ABBA # 778115) appears to be a prominent Brahman sire in this test for the traits of % intramuscular fat (IMF; i.e., marbling measured with ultrasound at 12 months of age) and ribeye area (REA). Specifically:

- 1. Brahman and 1/2-blood sons of 874 had % IMF measures equivalent to similar-age Angus bulls.**
- 2. Sons of 874 had one full percentage greater level of IMF than sons of other Brahman sires.**
- 3. 1/2-blood sons of 874 had superior REA relative to other bulls.**

Number of bulls	Breed	Adj. Birth Wt, lbs	Adj. Wean Wt, lbs	Adj. Year Wt, lbs	ADG	Yearling REA, in ²	Yearling Fat Thickness, in	Yearling % IMF	Yearling SC, cm
71	Angus	78	561	986	3.18	10.3	0.25	3.9	34.1
10	Brahman –Other sires	77	497	855	2.6	10.9	0.2	2.8	27.1
8	Brahman -sons of 874	80	515	869	2.72	10.3	0.23	3.9	28.8
5	1/2 Brahman x 1/2 Angus - sons of 874	78	610	1058	3.19	13.8	0.27	3.8	33.9

Semen available for Mr. 6X Sunland 874 and NMSU 5129.

Angus Heifers

34	Miss NMSU 8004		16190193				
	Born: 2/14/08 Polled		\$EN: +17.95				
<ul style="list-style-type: none"> S S Decatur 55H Miss NMSU 6002 		<ul style="list-style-type: none"> S A Fame Lucy S S 26F 4P 301 of EXT 4H23 Miss NMSU 3022 					
CED	BW	WW	YW	MILK	SC	REA	IMF
+9	+0	+37	+65	+9	-0.07	+0.29	+0.021
0.05	0.35	0.33	0.05	0.2	0.2	0.15	0.17
BW	WW	YW	ADG	SC	REA	REA/WT	IMF
77	514	803	1.95	.	6.40	0.96	5.47
110	103	112	122	.	98	102	121

35	Miss NMSU 8028		16190201				
	Born: 3/24/08 Polled		\$EN: +19.84				
<ul style="list-style-type: none"> NMSU 3037 Miss NMSU 4006 		<ul style="list-style-type: none"> NMSU 726 Miss NMSU 940 NMSU 616 Miss NMSU 725 					
CED	BW	WW	YW	MILK	SC	REA	IMF
+9	-0.1	+29	+41	+15	+0.15	+0.04	-0.08
0.05	0.21	0.18	0.05	0.09	0.05	0.08	0.06
BW	WW	YW	ADG	SC	REA	REA/WT	IMF
82	532	777	1.63	.	7.60	1.04	3.96
117	107	109	102	.	117	111	87

36	Miss NMSU 8006		16190194				
	Born: 2/18/08 Polled		\$EN: +25.00				
<ul style="list-style-type: none"> D D A Fahren 21X Miss NMSU 5036 		<ul style="list-style-type: none"> Fahren of Wye Umf 5830 D D A Melisa 549 NMSU 3005 Miss NMSU 873 					
CED	BW	WW	YW	MILK	SC	REA	IMF
+13	-1.8	+20	+47	+12	+0.04	-0.24	-0.02
0.05	0.36	0.34	0.05	0.18	0.05	0.11	0.09
BW	WW	YW	ADG	SC	REA	REA/WT	IMF
81	373	706	1.98	.	6.30	0.93	4.87
115	75	99	124	.	97	99	108

37	Miss NMSU 8016		16190198				
	Born: 2/22/08 Polled		\$EN: +22.39				
<ul style="list-style-type: none"> D D A Fahren 21X Miss NMSU 4020 		<ul style="list-style-type: none"> Fahren of Wye Umf 5830 D D A Melisa 549 NMSU 0001 Miss NMSU 0014 					
CED	BW	WW	YW	MILK	SC	REA	IMF
+13	-1.4	+18	+435	+11	+0.13	-0.29	-0.03
0.05	0.37	0.35	0.05	0.19	0.05	0.11	0.08
BW	WW	YW	ADG	SC	REA	REA/WT	IMF
81	457	697	1.70	.	6.60	0.93	4.52
115	92	98	106	.	102	99	100

Brangus Heifers

38 Miss NMSU L1 Contrast 8034 C10125325
 Born: 2/24/08 ¼ Brah:¾ An Polled

Connealy Danny Boy
 Connealy Contrast
 Doris of Conanga 669
 Miss NMSU L1 3058
 NMSU 9105
Miss NMSU 445

BW	WW	YW	MILK	SC	REA	IMF	FT
-0.2	+26	+36	+4
0.18	0.2	0.06	0.09
BW	WW	YW	ADG	SC	REA	REA/WT	IMF
86	626	924	1.75	.	11.87	1.23	5.53
115	116	119	121	.	124	106	98

42 Miss NMSU L1 4135 8040 C10125315
 Born: 2/11/08 ¼ Brah:¾ An Polled

Mr 6X Sunland 874
 NMSU L1 4135
 B3R 8178 3091 Elise 211
 Miss NMSU 641
 NMSU 302
Miss NMSU 415

BW	WW	YW	MILK	SC	REA	IMF	FT
-1	+8	+8	+6
0.22	0.22	0.07	0.09
BW	WW	YW	ADG	SC	REA	REA/WT	IMF
79	466	749	1.46	.	8.71	1.13	4.37
106	86	97	101	.	91	97	77

39 Miss NMSU 904R 8078 R10125258
 Born: 4/18/08 Gen: 5 Polled

MC News Man 2K4
 MC News Man Jr. 904R
 4T Ms Wendy 904J3
 Miss NMSU 5062
 NMSU 3133
 Miss NMSU 3132

BW	WW	YW	MILK	SC	REA	IMF	FT
+1.5	+30	+50	+3	0.64	+0.15	-0.06	-0.002
0.24	0.23	0.1	0.1	P	P	P	P
BW	WW	YW	ADG	SC	REA	REA/WT	IMF
95	556	918	1.79	.	9.35	1.20	3.68
109	101	113	125	.	105	107	88

43 Miss NMSU L1 5027 8036 C10125250
 Born: 2/7/08 ¼ Brah:¾ An Polled

SS Decatur 55H
 NMSU 5027
 Miss NMSU 0014
 Miss NMSU L1 3066
 NMSU 9105
 Miss NMSU 265

BW	WW	YW	MILK	SC	REA	IMF	FT
-3.7	+6	+9	+3
0.19	0.13	0.07	0.08
BW	WW	YW	ADG	SC	REA	REA/WT	IMF
74	505	719	1.46	.	9.37	1.19	5.65
99	94	93	101	.	98	103	100

40 Miss NMSU 904R 8080 R10125259
 Born: 4/21/08 Gen: 5 Polled

MC News Man 2K4
 MC News Man Jr. 904R
 4T Ms Wendy 904J3
 Miss NMSU 5110
 NMSU 652
 Miss NMSU 2002

BW	WW	YW	MILK	SC	REA	IMF	FT
+2	+33	+56	+8	0.44	+0.26	-0.08	+0.001
0.24	0.24	0.11	0.11	P	P	P	P
BW	WW	YW	ADG	SC	REA	REA/WT	IMF
99	563	859	1.55	.	7.46	1.03	3.04
116	103	106	109	.	84	92	73

44 Miss NMSU L1 5027 8058 C10125253
 Born: 2/27/08 ¼ Brah:¾ An Scurred

SS Decatur 55H
 NMSU 5027
 Miss NMSU 0014
 Miss NMSU L1 2036
 SRW Mr. Flying W 831
 Miss NMSU 942

BW	WW	YW	MILK	SC	REA	IMF	FT
-3.6	+5	+13	+6
0.23	0.22	0.06	0.09
BW	WW	YW	ADG	SC	REA	REA/WT	IMF
60	559	707	1.13	.	8.24	1.10	7.08
80	104	91	78	.	86	95	125

41 Miss NMSU 4095 8064 R10125288
 Born: 3/6/08 Gen: 5 Polled

NMSU 1029
 NMSU 4095
Miss NMSU 2046
 Miss NMSU 4068
 NMSU 652
 Miss NMSU 829

BW	WW	YW	MILK	SC	REA	IMF	FT
+1.2	+28	+52	+7	+0.82	+0.22	-0.04	0.003
0.25	0.24	0.11	0.11	P	P	P	P
BW	WW	YW	ADG	SC	REA	REA/WT	IMF
82	592	850	1.55	.	9.65	1.14	3.91
94	108	104	109	.	109	102	94