

The availability of water in New Mexico is determined by monitoring the rainfall, snow fall and other climatic variables. Climatic monitoring conducted by the state climatologist and Federal agencies is the first step in the allocation of water in the state.

The State Climate Center maintains data on pan evaporation throughout the state to estimate lake evaporation.

For information on climate and hydrologic information in New Mexico go to the New Mexico Climate Center home page at <http://weather.nmsu.edu>

The State Climatologist is a member of the New Mexico drought monitoring group and maintains the official web site for the Drought Task Force.

The New Mexico Climate Center publishes a newsletter twice a year on wide ranging climatic subjects as; Drought in New Mexico; When it rains, it pours; Estimating the 100 year flood; Using weather data to estimate rangeland carrying capacity; Extinguished for now- NM 2000 fire season; Making your home safe from wildland fires; and Water Climate and Agriculture.

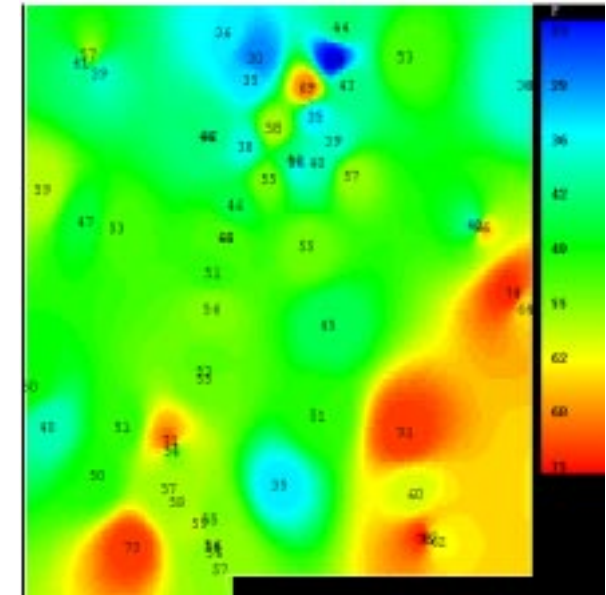
These publications are available at: <http://weather.nmsu.edu/news.htm>

The New Mexico Climate Center provides links to other climate web sites.



# NEW MEXICO STATE UNIVERSITY CLIMATE CENTER

*Maximum Temperature Map of New Mexico 01/01/2003*



*NMSU Climate Center*

New Mexico State University  
 State Climate Center Office  
 PO Box 30003, MSC 3Q  
 Las Cruces, NM 88003  
 e-mail: [webmaster@weather.nmsu.edu](mailto:webmaster@weather.nmsu.edu)

## Climate Solutions for a Semi-arid Environment



## THE SETTING

Serving the agriculture and economic needs of the State of New Mexico, the New Mexico Climate center consists of the State Climatologists, Dr. Ted Sammis, and a group of dedicated students that maintain an automated network consisting of climate stations operated by New Mexico State University at the Agricultural Science centers; the Bureau of Land Management; the Natural Resource and Conservation Service and NOAA. The New Mexico Climate Center maintains a web site at <http://weather.nmsu.edu/> that processes the climate data daily and makes it available to the public. The students and the State Climatologist have developed the web site over 15 years and the tools on the web site present the data in the formats needed by the end users.



The New Mexico Climate center is a statewide network with climate information collected from 138 stations ranging from 4000 ft to 9300 ft elevation.

## THE HISTORY OF THE STATE CLIMATE CENTER

In 1978 the state of New Mexico created the state climatologist position ( Office of State Climatologist created; state climatologist. 75-4-3 NMSA 1978) with the position located within the New Mexico Department of Agriculture. The position was authorized but not funded by the state legislature. Dr Kunkel was the first state climatologist. In 1989 the State Climatology position was taken over by the Agriculture Experiment Station at New Mexico State University. Dr. Ted Sammis was named the State Climatologist. A formal memorandum of understanding between the New Mexico Department of Agriculture and the Agriculture Experiment Station, New Mexico State University was signed in 1997 that officially transferred the responsibilities of the state climatologist from the Department of Agriculture to the Agriculture Experiment Station.



## THE PRODUCT

The state climatologist by law is to assess the effect of climate on the natural environment, agricultural production, land and natural resources and human health; coordinate climate impact studies and programs to improve understanding of climate processes, natural and man-induced, and of the social and economic implications of climate change; develop methods and procedures to enable interested state agencies and public institutions of higher education to participate in the program; disseminate climate data, information, advice and assessments to state agencies, local public bodies and the general public; establish an effective mechanism for consultation and coordination with the federal government and other states in climate related activities; and administer the state intergovernmental climate program. The results of these activities are present on the New Mexico Climate Center web site.

The yearly total rainfall (inches) for Las Cruces and Sante Fe showing the periods of drought

