

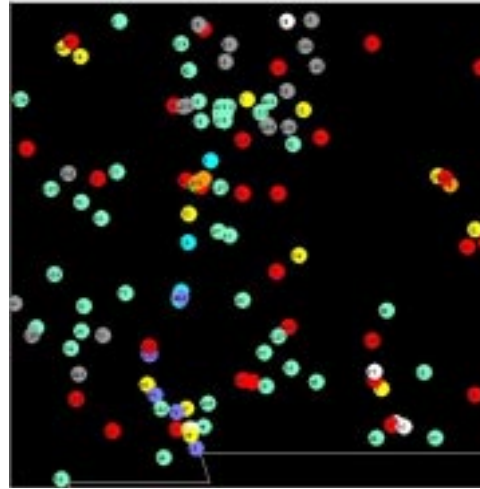
## The Mission

"The purpose of the office of state climatologist is to assist the state to understand and respond to natural and man-induced climate processes and their implications, to cooperate with the federal government in activities relating to climate studies and advisory services, to promote and disseminate a general knowledge of the climatology of the state, to establish a state climate program in accordance with the provisions of the federal National Climate Program Act and regulations promulgated pursuant to that act and to receive and utilize grants made available to the state pursuant to the provisions of the federal National Climate Program Act and other grants, gifts, donations or bequests from any source to be used in carrying out its purpose."

Consequently, the state climatologist, Dr. Ted Sammis, is the first contact person for climatic information in the state. He is a member of the American Assoc. of State Climatologists. State Climatologists are individuals who have been identified by a state entity as the state's climatologist and who are also recognized by the Director of the National Climatic Data Center of the National Oceanic and Atmospheric Administration as the state climatologist of a particular state.

The duties of the State Climatologist are:

- assessing the effect of climate on the natural environment, agricultural production, land and natural resources and human health;
- coordinating climate impact studies and programs to improve understanding of climate processes, natural and man-induced, and of the social and economic implications of climate changes;
- developing methods and procedures to enable interested state agencies and public institutions of higher education to participate in the programs;
- disseminating climate data, information, advice and assessments to state agencies, local public bodies and the general public;
- establishing an effective mechanism for consultation and coordination with the federal government and other states in climate related activities; and
- administering the state intergovernmental climate program.



### Color Key of Weather Stations

NMSU State Climate Network - yellow  
Cotton Simulation Model Climate Network - white  
City of Albuquerque Parks and Recreation Network - gold  
Middle Rio Irrigation District Network - aqua  
Private Operator - green  
NRCS Snotel Weather Station - purple  
National Weather Service Climate Station - red  
EBID Salim - dark purple  
RAWS - light aqua

***The New Mexico  
Climate Center Home page is at :  
<http://weather.nmsu.edu>***

For more information contact:

Dr. Ted Sammis  
New Mexico State University  
State Climate Center Office  
PO Box 30003, MSC 3Q  
Las Cruces, NM 88003

Phone: 505-646-5082  
FAX: 505-646-6041  
E-mail: [webmaster@weather.nmsu.edu](mailto:webmaster@weather.nmsu.edu)



## New Mexico Climate Center at Las Cruces, NM

[new mexico climate center](#)

NMCC Climate Station Data  
Other NM Climate Station Data  
Crop Information  
Water Resources  
Climate Links  
Agricultural Models and Tools



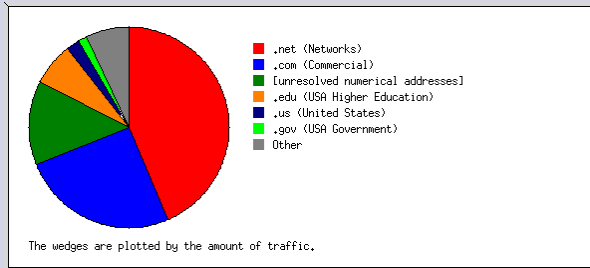
**Serving the citizens of New  
Mexico for 25 years and  
bringing Climate Information  
to Life**

## New Mexico Climate Center 1979-2003

### Introduction

More than 6000 requests for climate information are answered at the Internet web site per day.

- 43% of requests are from network sites
- 25% of requests are from commercial sites
- 6% of requests are from educational sites



Additional 300 requests are answered by phone and email each year.

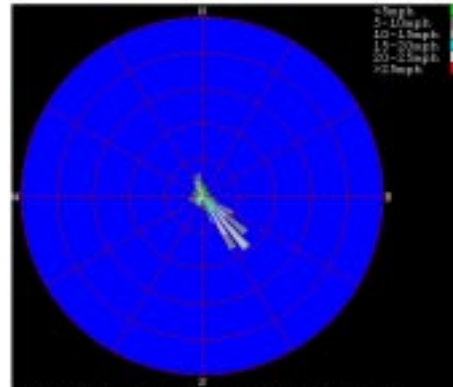
In addition to requests for climate data, the New Mexico Climate Center supplies information on irrigation scheduling of native, landscape, and commercial crops; heat and cooling degree-day calculation for the construction industry; economic irrigation software; and teaching material on soil and land use, instrumentation, and irrigation science.

The New Mexico Climate Center is the official web site for the New Mexico Drought Task Force with information about current drought status and future climatic conditions.

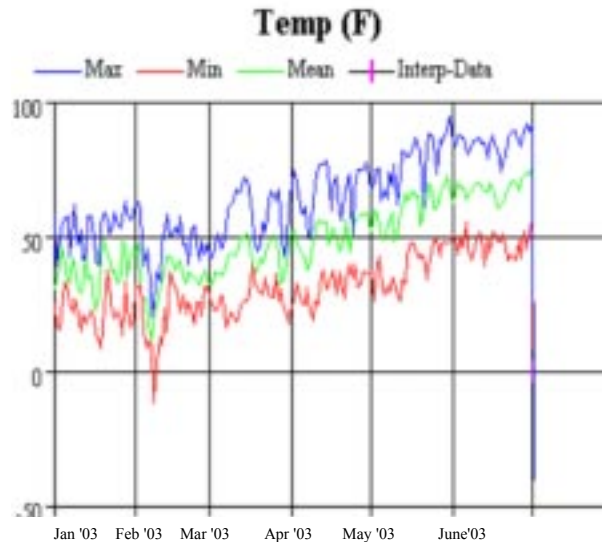
The New Mexico Climate Center provides web based tools to use climate data for calculating when to apply pesticides based on growing degree day models, reference evapotranspiration calculating climate data from the Federal Government.

The New Mexico Climate Center collects daily climate data from 138 automated climate stations around the state including irrigation districts and NAPI (Navajo Agricultural Products Industry). The New Mexico Climate Center operates 27 of these stations.

The New Mexico Climate center presents the processed data in many graphical and tabular forms.



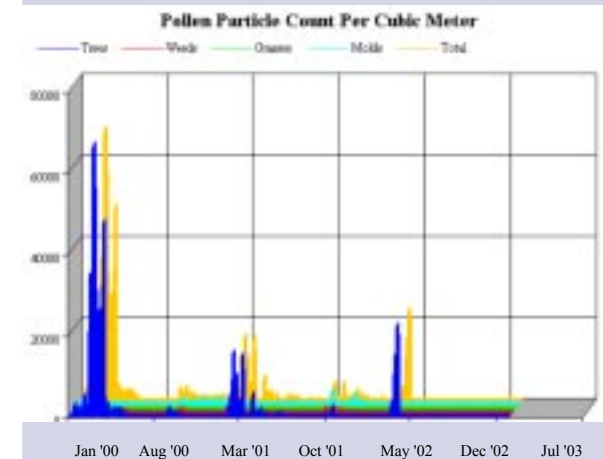
Predominate Wind Direction for Clovis, NM



Temperature Data for Alcalde, New Mexico



Las Cruces, NM  
Climate Station



Pollen data is also collected by private and state agencies and processed at the New Mexico Climate Center.