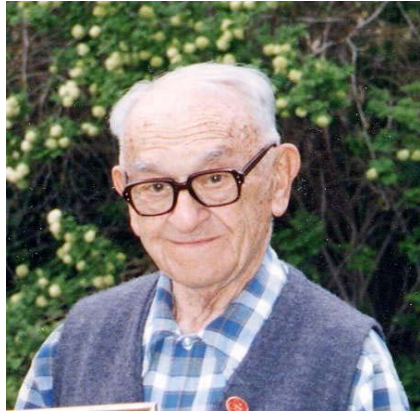


**NEW MEXICO STATE UNIVERSITY
DEPT. OF PLANT & ENVIRONMENTAL SCIENCES
LOWENSTEIN LECTURE SERIES**



**Bonnie and Bernard
Lowenstein**

The Dr. Lowenstein Lecture Series is made possible through a gift from Bonnie and Bernard Lowenstein of Albuquerque, NM. The objective

of the lecture series is to bring renowned scientists in Horticulture, Agriculture, Genetics, and Environmental Science to the NMSU to foster greater appreciation of new development in the field. Dr. Lowenstein practiced medicine with the US Indian Services, the Army, and the Veterans Administration from 1936 to 1982. His experience brought him to Albuquerque, NM, where he currently resides. Bonnie had a life-long interest in gardening and flowers. This commitment was expressed in her dedication to gardening, and her involvement in the Albuquerque Garden Club. Dr. Lowenstein was inducted into the Sam Steele Society in 1997 in recognition of his contribution to the College of Agriculture and Home Economics. The Bonnie Lowenstein Memorial endowed scholarship has benefited undergraduate students since 1993, and the Lowenstein Lecture Series benefits students, faculty and the horticulture community of New Mexico. The lecture series was established to promote interest and knowledge of other fields of plant science. New Mexico State University and the Department of Plant and Environmental Sciences greatly appreciate the Generosity and support of Dr. Lowenstein.



Presents



John D. Corbett Ph.D.



**SPONSORED BY THE
BONNIE AND BERNARD LOWENSTEIN ENDOWMENT
AND THE JOSE FERNANDEZ CHAIR**

Dr. Corbett is the founding visionary of AWhere, Inc. (formally Mud Springs Geographers, Inc.) With an education in agricultural climatology and a topical interest in Africa, Dr. Corbett has over 20 years of experience applying practical geographic solutions to real-world challenges. Geographic Information System (GIS) technology is a natural – and powerful – tool-kit for this work but the complexity of use has limited adoption by non-specialists. AWhere mapping software emerged to address this need: spatial tools for the non-specialist with an emphasis on ease of use, ease of sharing, ease of presentation creation. After 5 years with Texas A&M University, Dr. Corbett moved into the private sector with now more than 10 years experience in managing a small business operation; three years with a global corporation as Head of Global GIS (Syngenta AG, Basel, Switzerland) where he developed and delivered custom location intelligence projects; and additional international experience in Mexico (CIMMYT) and Kenya (ICRAF now World Agroforestry Centre).

Where:

Chemistry Building, Room 153

When:

Thursday, September 6, 2007

5:00 – 6:30 p.m.

Title:

**“Next Generation Mapping: Sharing and Utilizing
Interactive maps”**

**With examples from urban challenges, business
intelligence, and environmental sciences**