

## Some Facts of the Texas Dairy Industry<sup>1</sup>

- 9<sup>th</sup> largest milk producing state. Contributes 6.4 billion (3.6%) of the 177 billion pounds of milk produced annually in the United States
- 8<sup>th</sup> largest herd size with 325,000 milking cows
- 12<sup>th</sup> in milk productivity with 20,131 lbs milk/cow/year. 6<sup>th</sup> amongst the 10 largest dairy states and 11<sup>th</sup> amongst the 23 states
- 840 total dairy producers
- 380 milking cows per dairy
- 11<sup>th</sup> highest growth (12%) in the last five years (2000-2005)

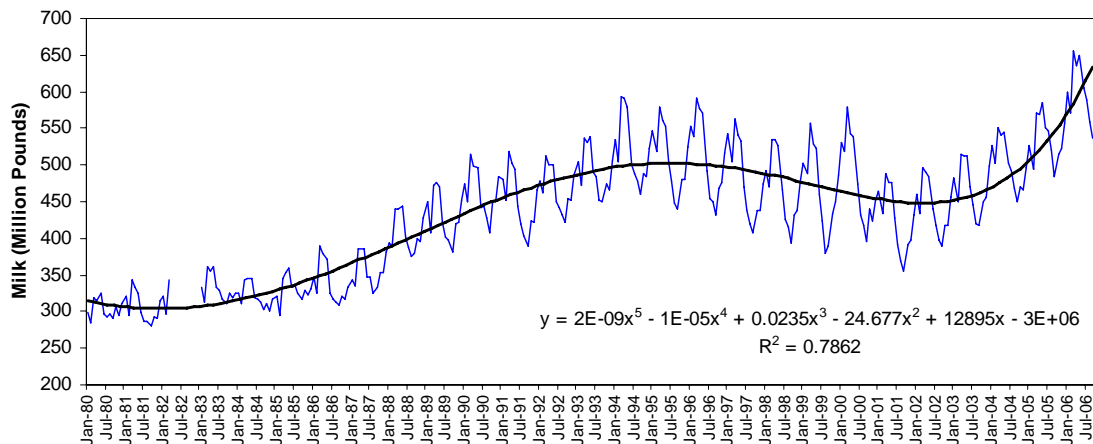


Figure 1. Monthly Texas milk production in the last 26 years.

- Milk wholesale in Texas is the 5<sup>th</sup> agricultural cash receipt that contributes 6% (\$981 million) of the state agricultural revenues

		Milking cows heads	Milk (000) pounds	Milk Productivity Pounds/cow/year
1	Erath	62,004	1,225,200	19,760
2	Hopkins	27,193	538,700	19,810
3	Comanche	25,003	496,300	19,850
4	Lamb	19,199	385,900	20,100
5	Castro	17,300	346,000	20,000
6	Hale	16,100	321,200	19,950
7	Deaf Smith	12,798	254,300	19,870
8	Bailey	11,801	237,200	20,100
9	Parmer	11,801	235,200	19,930
10	Hartley	10,598	212,700	20,070
	Others <sup>1</sup>	111,200	2,189,300	19,559

<sup>1</sup>30 other counties produce milk in the state of Texas

<sup>1</sup> Victor E. Cabrera, Extension Dairy Specialist, NMSU Agricultural Science Center at Clovis.  
 Document available at: <http://dairy.nmsu.edu>

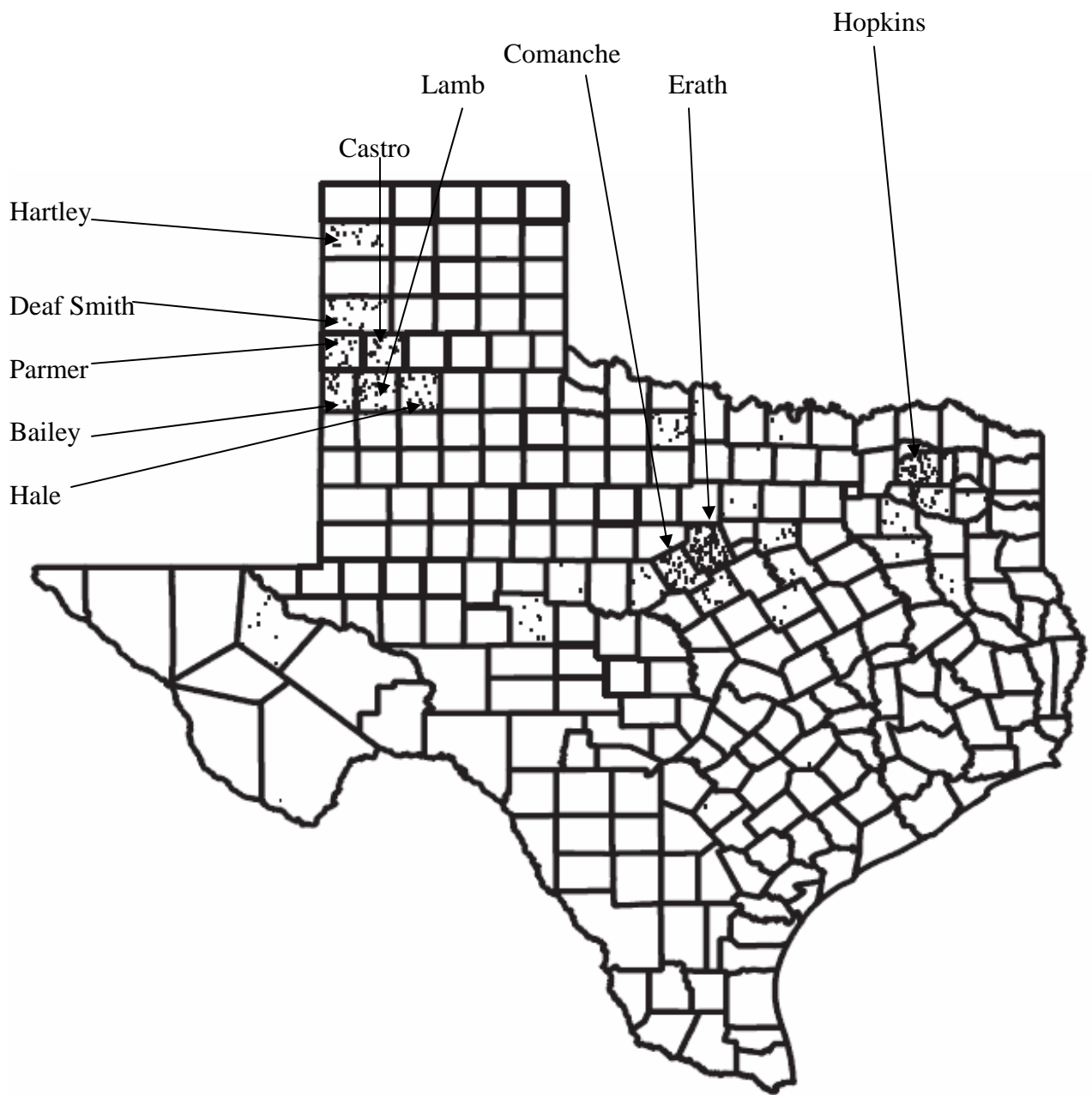


Figure 2. Milking cows in Texas. Each dot represents 500 heads.