



Live, Learn and Thrive.

Extension Plant Pathology



Partnerships

National Plant Diagnostic Network

NMSU's Plant Diagnostic Clinic serves as a support facility for the Western Region of the National Plant Diagnostic Network. The NPDN is a cooperative project between land grant universities, state departments of agriculture and the USDA. The overall objective of the network is to establish a functional network of existing plant diagnostic laboratories to rapidly and accurately detect and report pathogens, arthropods, and weeds of national interest, whether intentionally introduced or not.

IPM PIPE

The mission of IPM PIPE is to realize a dynamic, integrated national system facilitated by information technology that provides centralized, useful tools with reliable information for IPM practitioners. Our vision is to develop the IPM PIPE to help maximize economic returns, and improve social welfare and environmental health by promotion of efficient and coordinated IPM decision support systems. NMSU is a partner in the development of these disease management systems.

Extension Plant Pathology Programming

Educational Presentations

- Grower/Commodity Conferences
 - Master Gardener Training
 - Pesticide Applicator Training
- Crop Biosecurity—First Detector Training
 - Diagnosing Plant Disorders
 - Plant Health Management

Clinical Plant Pathology—Pest Survey and Detection

Applied Research—Integrated Disease Management

Crop Pest Risk Assessment

Public Outreach

- Publications
- TV, Radio, and News Releases
 - Website updates
(<http://plantclinic.nmsu.edu>)

New Mexico State University

Natalie P. Goldberg, Ph.D.
Extension Plant Pathologist
Extension Plant Sciences Department
MSC 3AE, P.O. Box 30003
Las Cruces, NM 88003

Phone: 575-646-1621
E-mail: ngoldber@nmsu.edu
Web: <http://eps.nmsu.edu>

Plant Diagnostic Clinic

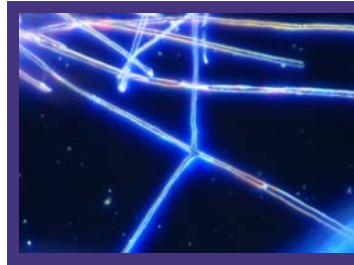
Mission Statement

The Plant Diagnostic Clinic is designed to provide plant diagnostic services for the State of New Mexico. Our services include analysis of plant material for plant pathogens and environmental stresses as well as suggesting appropriate control measures when available. The clinic also facilitates insect and weed identification through referrals to other specialists. Our clients include extension personnel, crop consultants, growers, retailers, landscape professionals, golf courses, researchers, government agencies, and homeowners. The Plant Diagnostic Clinic works very closely with the New Mexico Cooperative Extension county offices. For initial assistance with plant problems contact the county extension office near you.

Submit Samples to:
New Mexico State University
Plant Diagnostic Clinic
MSC 3AE, P.O. Box 30003
Las Cruces, NM 88003

Overnight Delivery:
NMSU—Plant Diagnostic Clinic
NE Corner of Knox and College
Skeen Hall Room N140
Las Cruces, NM 88003

Phone: (575) 646-1965
E-mail: jfrench@nmsu.edu
Web: <http://plantclinic.nmsu.edu>



Accomplishments and Impacts

- Extension Plant Pathology programs reach over 1,500 people annually.
- 92% of attendees at Plant Pathology workshops indicate they increased their knowledge of plant diseases to a great extent.
- The NM Certified First Detector Program on crop biosecurity issues has trained over 4,000 First Detectors.
- The NMSU Extension Plant Pathologist was awarded *The Outstanding First Detector Educator* by the National Plant Diagnostic Network.
- The NMSU-Plant Diagnostic Clinic identifies on average 5 new diseases in New Mexico each year.
- The NMSU-Plant Diagnostic Clinic identifies over 2,000 plant disorders annually.
- Clientele are assisted in developing effective integrated disease management plans which are cost effective and help reduce pesticide use.

Plant Diagnostic Clinic Services Offered

- Diagnosis of abiotic disorders and infectious diseases
- Plant identification
- Arthropod identification
- Nematode analysis (soil)

Online plant specimen submission forms available through the New Mexico State University Distance Diagnostic System
<http://aces.nmsu.edu/ces/plantclinic/login>



New Mexico State University is an affirmative action/ equal opportunity employer and educator. NMSU and the U.S. Department of Agriculture cooperating.