

Pattern Alteration

Guide C-228

Susan Wright, Extension Consumer Education and Health Specialist

Cooperative Extension Service
College of Agriculture and
Home Economics



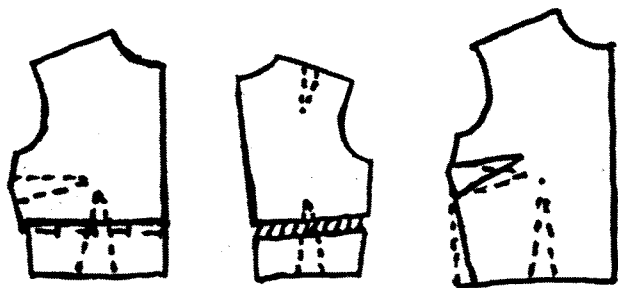
This publication is scheduled to be updated and reissue 4/06.

A comfortable, attractive garment fits properly. It is neither too large nor too small and conforms to the contours of the body without binding, sagging, straining, or wrinkling.

Pattern adjustment or alteration is often necessary to achieve good fit in a garment. Making adjustments or alterations before the garment is cut from fabric will eliminate many problems. Use this collection of alteration guidelines to solve women's most common fitting problems.

A pattern can be altered and adjusted three ways:

- By folding out excess fullness to make an area smaller.
- By slashing and spreading to increase dimensions, or slashing and overlapping to decrease dimensions.
- By redrawing darts or seamlines.



Fitting problems usually involve one or more of these basic body areas: neckline, bustline, hipline, arms, shoulderline, back waistline, abdomen.

As time passes, you may find that the problems of fitting your figure change. Because of this, you will want to compare your current body measurements plus ease to the particular pattern you are using. Make appropriate adjustments or alterations when you find differences between your measurements plus ease and the pattern. After adjusting or altering the pattern, do

a careful pin-fitting to further ensure that your garment will fit well.

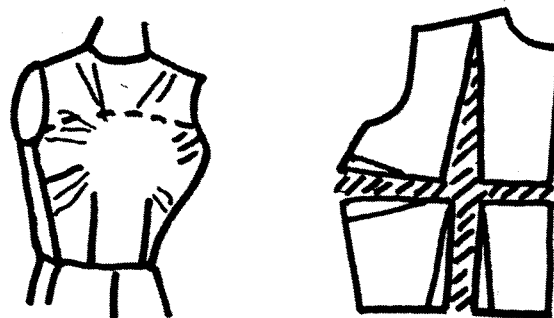
As you alter the pattern, remember these guidelines:

- Keep all fabric grainlines, the center front, and the center back on the fabric's straight grain.
- Make adjustments carefully in order to preserve the original style or design lines.
- Maintain ease allowance for comfort.
- Whenever possible, use adjustment lines already provided on a pattern.
- When you alter a piece, make corresponding changes on all related pieces.

ALTERING BODICE PATTERNS

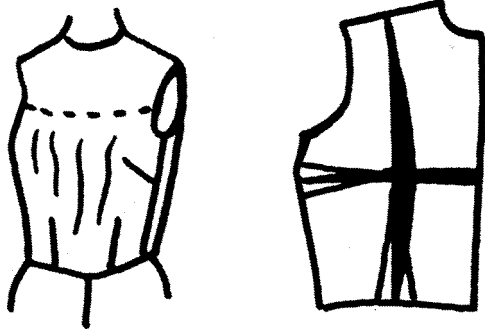
Full Bust (large cup size)

Slash across the pattern along bust dart foldline to center front. Slash across the pattern from waist to shoulder along waist dart foldline. Spread the desired amount at center front and bust area. Do not spread at shoulder seam. Redraw seamlines and darts. (New darts will be larger than the original darts.)



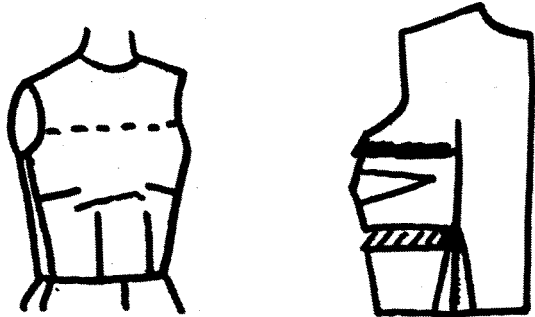
Small Bust (small cup size)

Slash across the pattern along bust dart foldline to center front. Slash across pattern from waist to shoulder along waist dart foldline. Overlap darts the desired amount to decrease the bust area. Do not overlap at shoulder seam. (New darts will be smaller than the original darts)



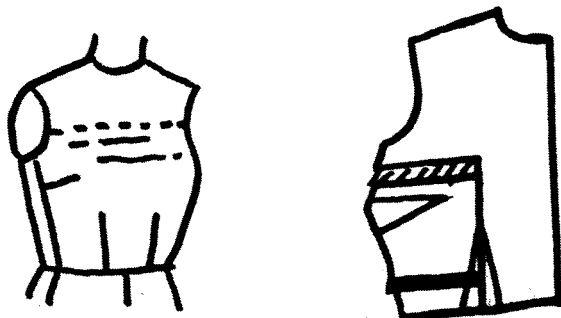
High Bust

Slash below dart and up to armscye (or armhole) level. Fold out desired amount above the dart. Lengthen the waistline dart as needed. Redraw seamline below dart.



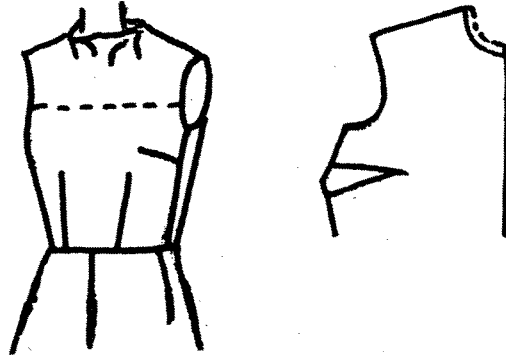
Low Bust

Slash above dart and down to waist. Fold out desired amount below the dart. Shorten the waistline dart as needed. Redraw seamline above dart.



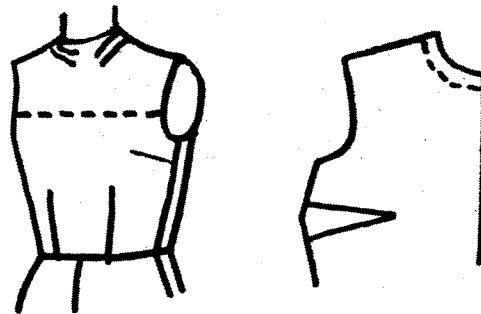
Small Neck

Redraw neckline to raise it the desired amount. Add the same amounts to the facing and collar patterns.



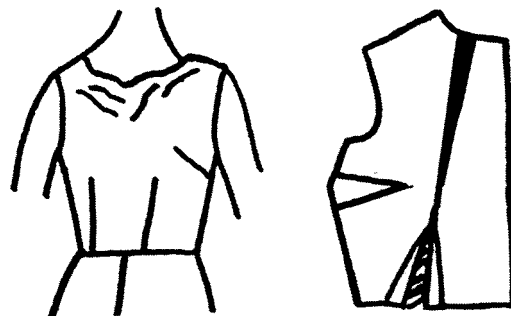
Large Neck

Redraw neckline to lower it the desired amount. Alter the facing and collar patterns to match the new neckline.



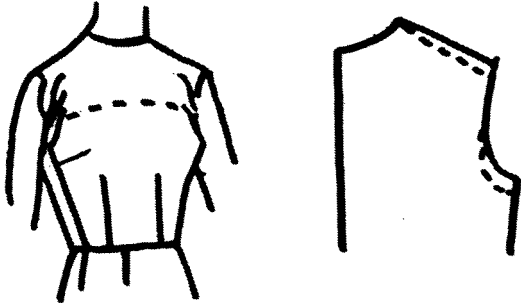
Gaping Neckline

Slash from neckline down through bust area to waist. Overlap the desired amount on neck edge; the waistline dart will become larger. Remember to alter the neckline facing and collar patterns to fit the altered neckline.



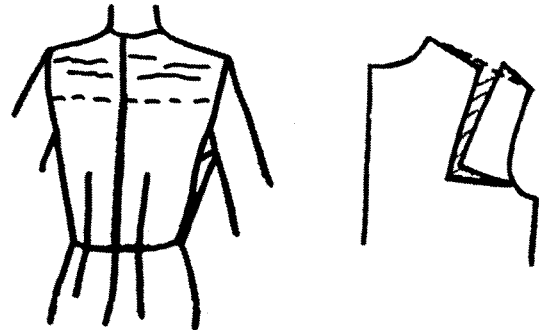
Sloping Shoulders

Redraw shoulder seam and armseye seams, sloping and lowering them the desired amount. Be sure to re-draw seams on both front and back pattern pieces.



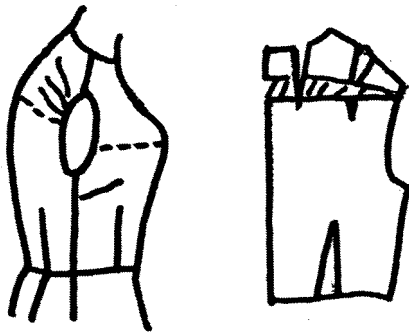
Broad Shoulders

Slash from midpoint of shoulder down and across to middle of armseye. Spread pattern the desired amount. Redraw seam from neckline to armseye. Be sure to complete alterations for both bodice front and back.



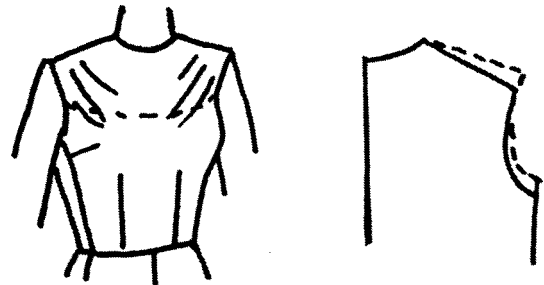
Round Shoulders

Slash across the back from center back to armseye. Slash down from middle of neckline curve. Spread the desired amounts, making the addition at the neckline a new dart.



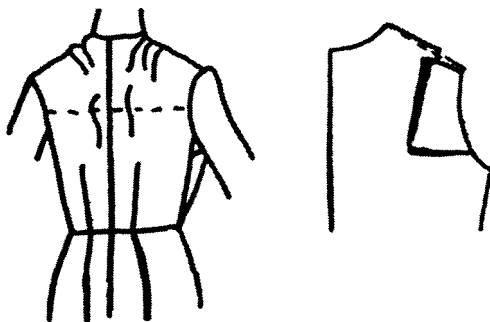
Square Shoulders

Redraw shoulder seam and armseye seams, raising them the desired amount. Be sure to redraw seams on both front and back pattern pieces.



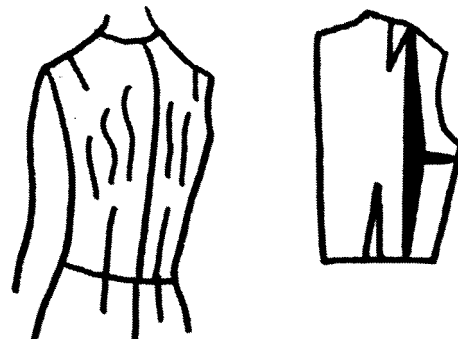
Narrow Shoulders

Slash from midpoint of shoulder down and across to middle of armseye. Overlap pattern the desired amount, and redraw. Be sure to complete alterations for both bodice front and back.



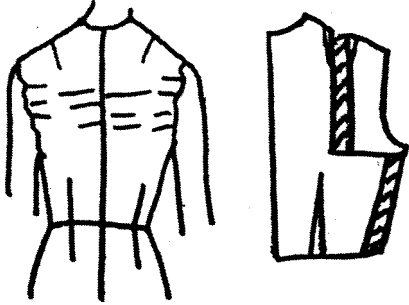
Narrow Back

Slash from shoulder to waist. Slash from underarm side seam to first slash. Overlap pattern sections the desired amount, but do not overlap at shoulder or waistline.



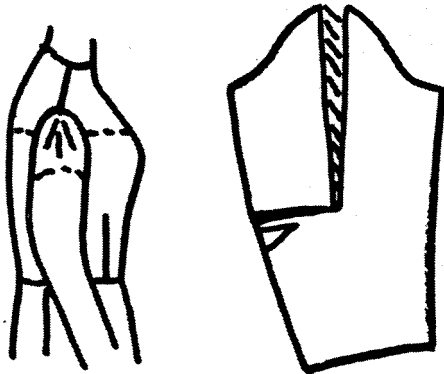
Broad Back

Slash down from midpoint of shoulder to bottom of armscye and across. Spread pattern the desired amount. Redraw side seam and shoulder dart. (The new dart will be larger than the original one.)



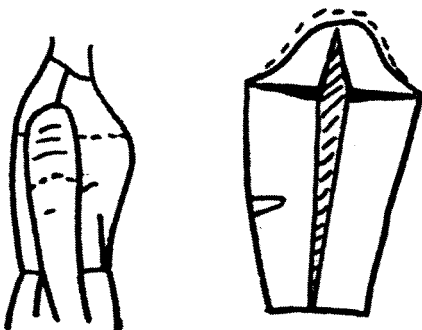
Sleeve Cap Too Narrow

Slash from top of sleeve to elbow, then across to side seam. Spread the desired amount at the top. Redraw cap. On both the bodice front and back, add 1/2 the amount added to the shoulder cap to the shoulder seam.



Large Upper Arm

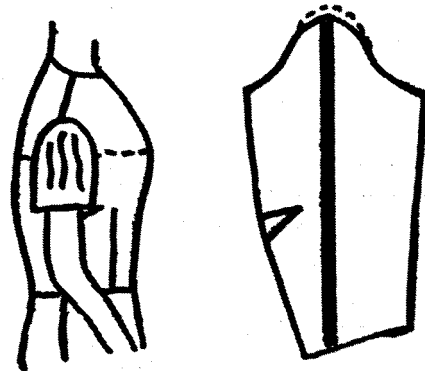
Measure the length of the original seam at the top of the sleeve and record the measurement. Slash sleeve down the center from top to bottom. Slash



across cap. As you pull the sleeve open to make it wider, the cap will become shorter; redraw the cap to its original height. Measure the length of the new seam at the top of the sleeve. Figure the difference from the original seam. Add 1/2 of the difference to the underarm seams of both the bodice front and back.

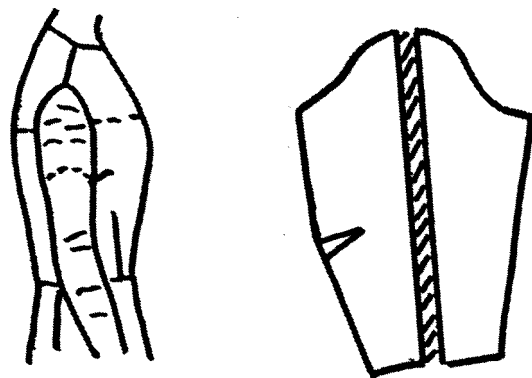
Small Arm

Measure the length of the original seam at the top of the sleeve and record. On the pattern, fold out the desired amount along a line from top to bottom of sleeve. Redraw lines at hem of sleeve and cap to make smooth seamline. Measure the length of the new seam at the top of the sleeve; figure the difference from the original seam. Remove 1/2 the difference from the underarm seams of both the bodice front and back.



Large Arm

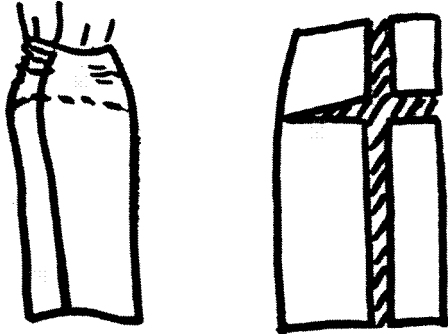
Slash sleeve down the center from top to bottom and spread the desired amount. Add 1/2 the amount added to the sleeve to the bodice front and back side seam.



ALTERING SKIRT PATTERNS

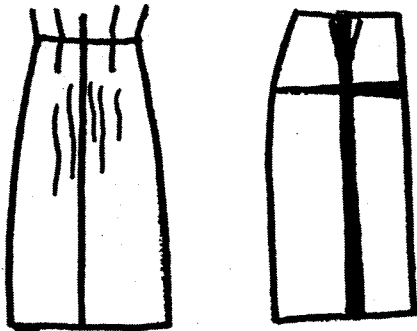
Protruding Derriere

Slash from waistline to hemline parallel to center back through waistline dart. In hip area, slash across pattern from center back to side seam. Spread the pattern the width and length desired. Redraw dart and seamlines. (The new dart will be larger than the original dart.)



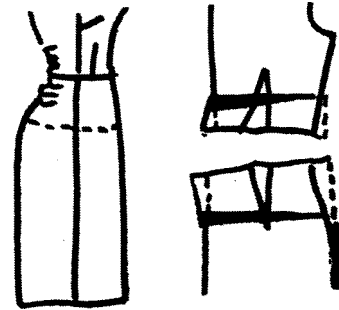
Flat Derriere

Slash parallel to center back from waistline to hemline through the waistline dart. In hip area, slash across pattern from center back to side seam. Overlap pattern in hip area the desired amount to reduce width and length. Redraw dart and seamlines. (The new dart will be smaller than the original.)



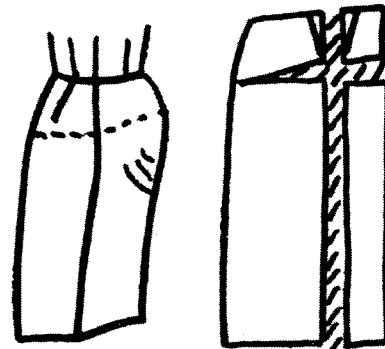
Sway Back

On bodice back just above waistline, fold out desired amount and redraw side seam, dart, and center back seam. On skirt back just below waistline, fold out desired amount and redraw side seam, dart, and center back seam.



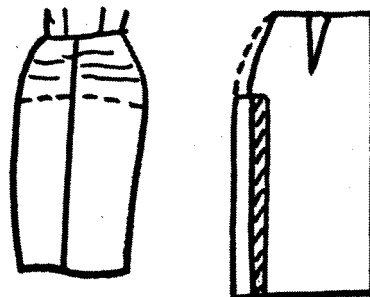
Protruding Abdomen

Slash from waistline to hemline parallel to center front through waistline dart. In the abdomen area, slash across the pattern from center front to side seam. Spread the pattern the desired amount to increase in width and length. Redraw dart and seamlines. (The new dart will be smaller than the original, and the waistline seam will curve up.)



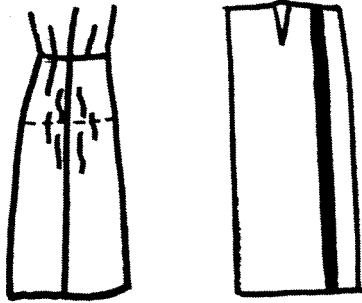
Bulging Thigh or Wide Hips

Slash parallel to the side seam from hemline up to thigh or hip area, then across to side seam. Spread the desired amount. Redraw seamline from waistline to hem.



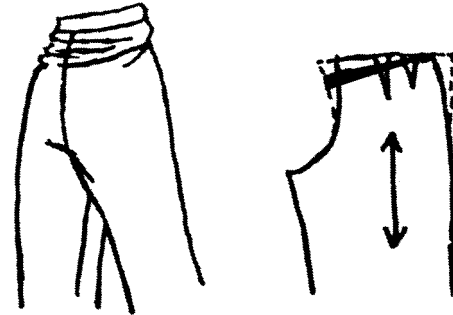
Flat Side Hip

Fold out the desired amount along the side seam of skirt front and skirt back. Fold should be parallel to center front and center back.



Sway Back

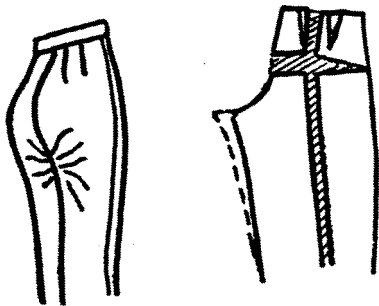
Fold out the desired amount below the waistline to decrease the length of center back crotch seam. Redraw side seam, darts, and center back seam.



ALTERING PANTS PATTERNS

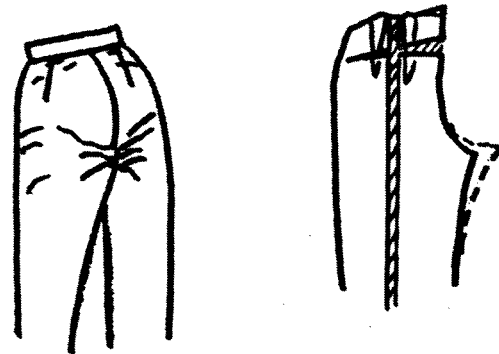
Protruding Derriere

Slash pattern back from waistline down center of leg parallel to grainline. In hip area, slash across from center back to side seam. Spread to add desired amount. Redraw darts. Redraw crotch seam and inseam to add needed length.



Protruding Abdomen

Slash at center front and spread to add the desired amount at waistline. Taper waistline to side seam and redraw darts. Redraw crotch seam and inseam to add amount needed to front crotch length and leg.



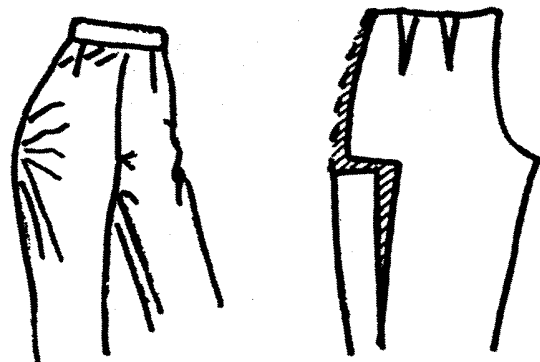
Flat Derriere

Fold pattern at center back to decrease fullness the desired amount, tapering waistline to the side seam. Fold out desired amount at side hip of back pattern piece only.



Bulging Thighs

Slash at front side hip and spread pattern the desired amount. Redraw to smooth seamline. Repeat for back side hip.



New Mexico State University is an equal opportunity/affirmative action employer and educator. NMSU and the U.S. Department of Agriculture cooperating.

Reprinted April 2001

Las Cruces, NM
5C