

Swine Selection, Feeding, and Showing



Craig Painter
State 4-H Agent
New Mexico State University



Successful Show Swine Projects

- Care and Housing
- Selection
- Feeding
- Health Care
- Training and Fitting
- Showing
- Ethics

Care and Housing

- 600 sq. ft. adequate for 2 pigs
- Keep pen dry
- Small shelter (8-ft.X12-ft.) facing south
- Fresh clean water supply
- Good strong fencing
- Use washed sand to keep pigs clean and cool

Selection

- Never select an inferior pig
- Born late January thru early March
- Growth potential
- Structural correctness
- Sound feet and legs
- Modern look
- Thick “loose” muscle
- Muscle balance
- Clean trim lower 1/3
- Know genetics if possible

Finding The Right Pig For The Judge.

- First, find out who is going to be judging your show.
- Second, know what he or she likes. Do this by picking up a magazine or make calls to people that have showed under them.
- Remember, a correct hog in structure is always better than a unsound hog. But they cost the same to feed out during summer!

Selection on Muscle



- Pigs should be:
 - naturally thick stifle to stifle
 - Wide tracking
 - Carry ham deep
 - Have “dimple” and “groove” down top
 - Top should resemble an hour glass shape.



Selection Continued

- Selection on side view:
 - pigs should have long neck
 - Level top (not steeped top, run down hill or dip behind shoulders)
 - Long sided
 - Free of excessive fat in lower 1/3
 - Carry ham down deep





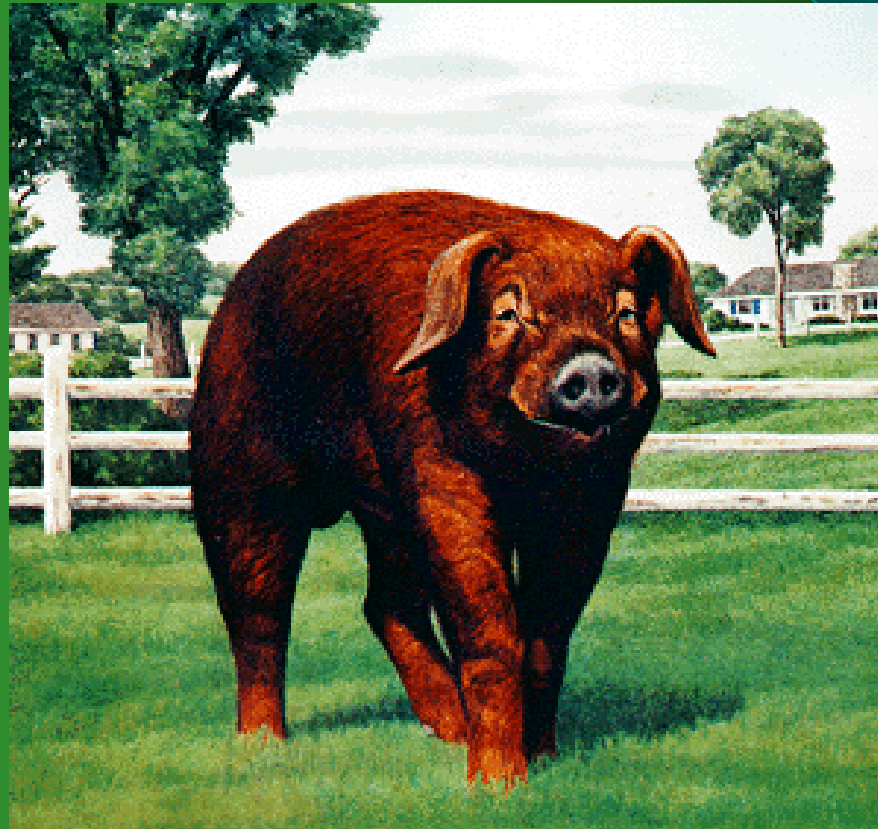
Gilts Vs. Barrows

- For most county fairs, both gilts and barrows are eligible to enter. Feeding can be different for gilts than barrows as barrows tend to put on fat at a faster rate than gilts.
- Only barrows are eligible for the New Mexico State Fair.

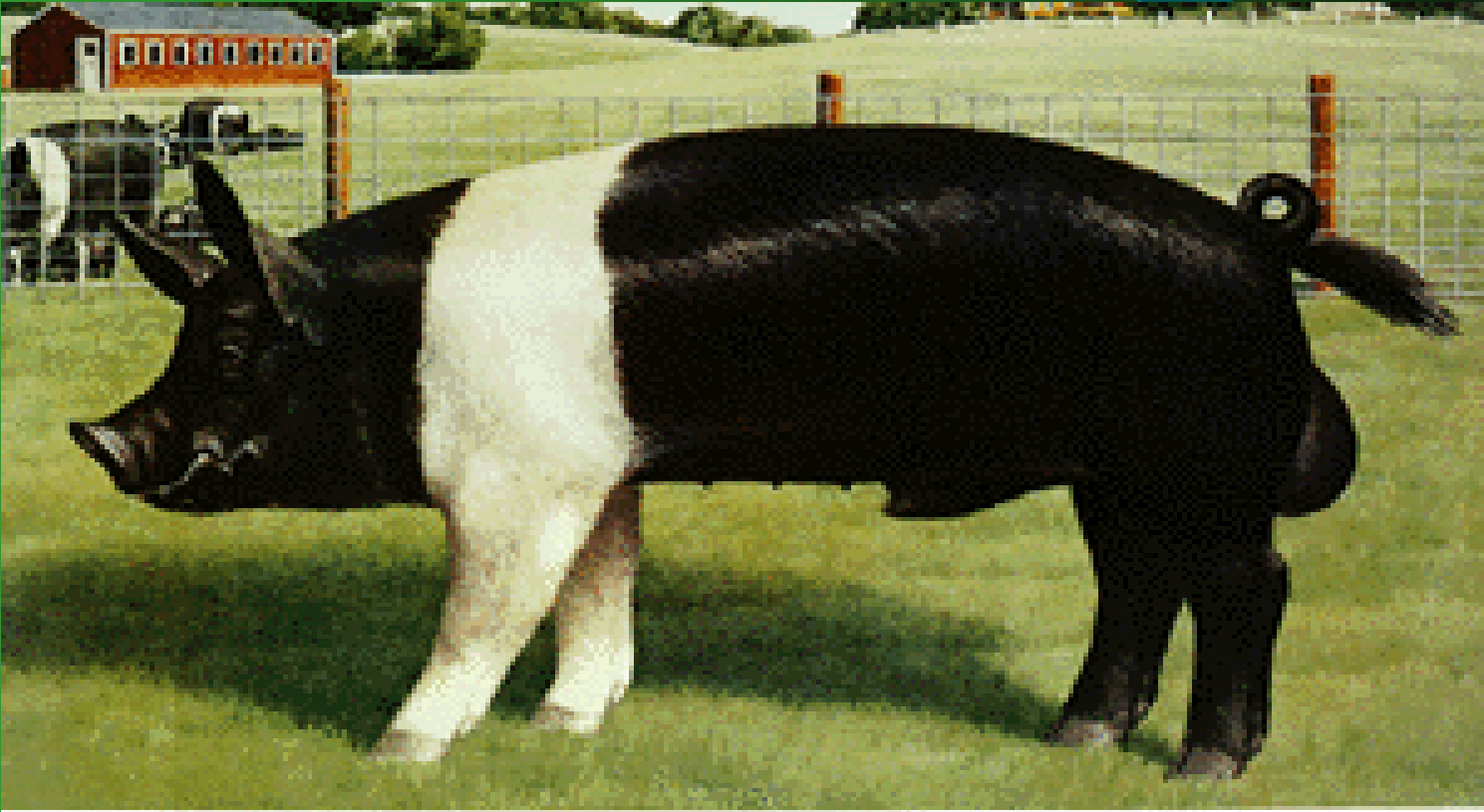
BREEDS For Albuquerque

- Duroc
- Hampshire
- Chester White/ Landrace
- Yorkshire
- Spots/ Poland China
- Cross Breeds

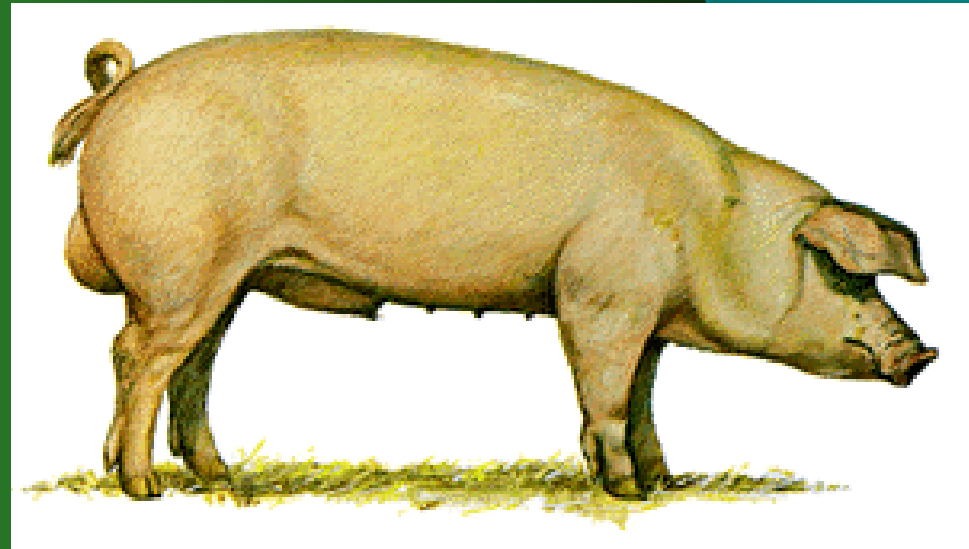
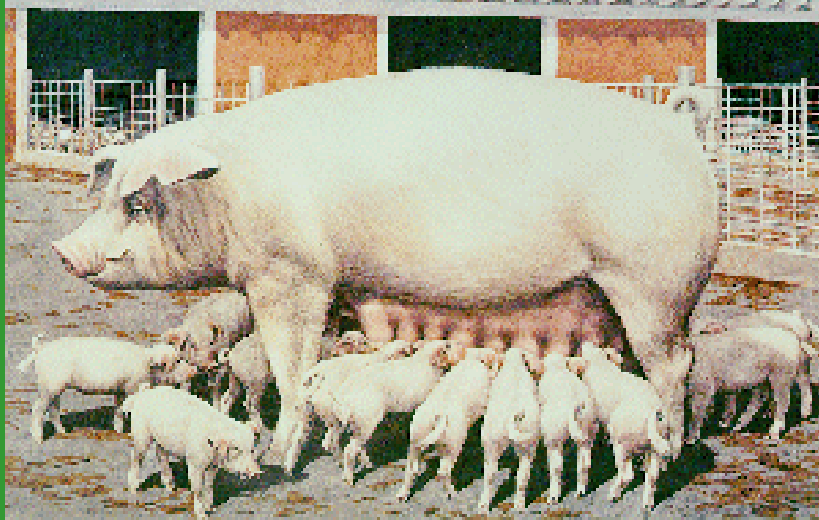
DUROC



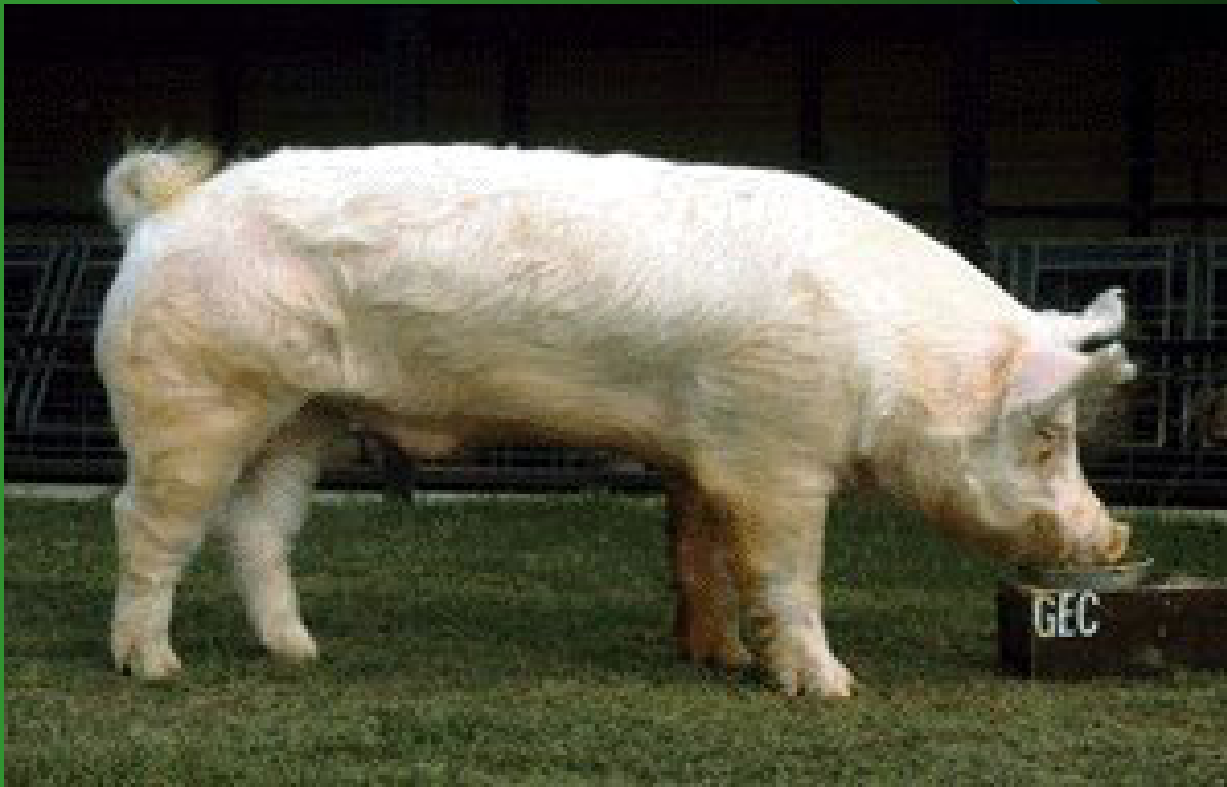
HAMPSHIRE



CHESTER WHITE /LANDRACE



YORKSHIRE



POLAND CHINA/SPOTS



CROSSES

- Any Pigs that do not meet the requirements for the breed classes.



Importing Pigs From Out Of State

- Proof of ownership must accompany the animal (NMLB “form 1” inspection certificate) and must be presented at all livestock shows attended.
- All health and ID requirements must be met.
- Ear notches must match paper work!
- See NMLB Regulations

Feeding

- Feed a balanced diet with adequate nutrients
- 12-16% protein
- Self-feeder up to 125-150 lbs. Depending on pig
- Hand feed twice a day after 150 lbs. (may be able to decrease protein levels)
- Fresh clean water supply a must
- Chart each pig's weight regularly
- Paylean & other supplements

Health Care

- Vaccination
- De-worming
- Practice preventative health care
- Over heating

Training

- Do Not control by fear
- Brush him/her at each feeding
- Use a show whip or pipe
- Tap on side to move forward
- Gentle pressure on opposite side of head to turn
- Start at least one month before show

Fitting

- Trim hooves if uneven or long
- Brush hair to train hair to lay down
- Wash weekly four weeks before show
- Clip hair one week prior to the show
- Use Sunscreen!!!!

Showing

- Know show schedule
- Wash pig prior to the show
- Carry a show whip and have a brush in your pocket
- Be courteous to everyone
- Know who the judge is

Showing

- Keep one eye on the judge and one eye on your pig
- Stay out of corners
- Keep your pig between you and the judge
- Drive your hog slowly and keep your hog 12-15 feet from the judge
- Never hit your pig in the show ring

Show Ethics & Quality Assurance



- Never use off label medication
- Know withdraw times
- If you think it might be illegal, it probably is!
- Use Proper injection sites
- Know and follow ownership deadlines

Conclusion

- Know what your looking at. Learn what sound on their feet means, and level through their back and hip is.
- What does your judge like.
- Good muscle pattern and loose muscle.
- A good hog cost the same as a bad hog to feed all summer long. So just start with the good ones.

**GOOD PIGS ARE BORN; CHAMPIONS
ARE MADE. GOOD LUCK!**

