

NMSU 38th Annual Bull and Heifer private treaty sale information

Bulls and Heifers are available now!

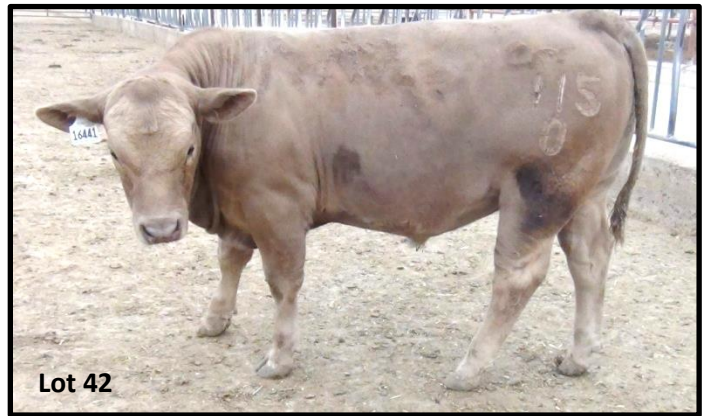
- Bulls and heifers are available on a first come first serve basis.
- Prices have been established for each animal but are negotiable
- Buyers are encouraged to contact
 - **Andrew Cox** (arcox@nmsu.edu or 520-210-1338) for information on College Ranch Brangus or Brahman
 - **Ray Hamilton** (rayham@nmsu.edu or 575-646-4500 for information on Santa Fe Ranch Brangus or Composite Bulls
 - **Shad Cox** (shadcox@nmsu.edu or 575-799-3569) for information regarding Angus
 - **Eric Scholljegerdes** (ejs@nmsu.edu or 701-426-4521) to look at cattle or any other information
- Bulls have all passed their BSE and Trich test
- Angus heifers have been Bangs vaccinated
- Older Angus bulls are from the Corona herd and are currently located at the ranch. These bulls are being offered due to severe drought conditions and significant reduction in the cow herd, which reduced bull battery needs.
- Brahman and Brangus Bull information is coming soon

Please feel free to check out the animals in the pens located off Knox and Gregg St. Or contact Eric Scholljegerdes to make an appointment to view animals.

- Check out the Animal and Range Sciences facebook page (<https://www.facebook.com/ANRS.NMSU/>) for videos of the bulls and heifers

NMSU Santa Fe Ranch Composite bulls

Lot	ID	Birth date	Birth wt	WW	YW	ADG	SC	Ratio	Ratio	Ratio	Ratio	Notes	Prices	Breed
								BW	WW	YW	ADG			
41	0109	3/3/2020	70	410	1027	4.20	35.5	0.95	1.09	1.03	1.08	Composite	\$ 2,000.00	SIM/Angus
42	0115	4/9/2020	64	399	907	3.70	33.0	0.87	1.06	0.91	0.95	Composite	\$ 2,000.00	Char/Angus



NMSU Santa Fe Ranch Registerable Brangus bulls

43	NMSU 0101	\$3,000	Registerable Brangus				
Born: 10/28/2019		\$EN	--				
Mr PB Redbull 521/09							
NMSU REDBULL 7076							
Miss NMSU 9054 5105							
New Beginnings of Brinks 392B18							
Miss NMSU 302E15							
Ms Brinks Ike 302T51							
CED	BW	WW	YW	Milk	SC	REA	IMF
BW	adj. WW	WW	ADG	SC	REA	Rea/Wt	IMF
76	320	758	4.70	38			
0.95	1.09	1.03	1.08				



44	NMSU 0103	\$3,500	Registerable Ultrablack Brangus				
Born: 3/22/2020		\$EN	--				
NMSU 9013							
NMSU 3020 (Registered Angus)							
Miss NMSU 9022							
Scipio of Brinks 99T29							
101 Ms Scipio 302X							
Ms Brinks Lead Time 302P15							
CED	BW	WW	YW	Milk	SC	REA	IMF
BW	adj. WW	WW	ADG	SC	REA	Rea/Wt	IMF
75	426	1022	4.08	37.5			
1.02	1.13	1.02	1.05				



45	NMSU 0105	\$3,300	Registerable Brangus					
Born: 4/6/2020			SEN					--
NMSU 628								
NMSU 628 6142								
Miss NMSU 2118								
Miss NMSU 392B3								
CED	BW	WW	YW	Milk	SC	REA	IMF	
BW	adj. WW	WW	ADG	SC	REA	Rea/Wt	IMF	
78	365	892	3.83	35.5				
1.06	0.97	0.89	0.98					



46	NMSU 0107	\$3,000	Registerable Brangus					
Born: 7/26/2020			SEN					--
NMSU 628								
NMSU 628 6142								
Miss NMSU 2118								
Essence of Brinks 541B61								
Miss Brinks Essence 359E								
Three Trees erica B0359								
CED	BW	WW	YW	Milk	SC	REA	IMF	
BW	adj. WW	WW	ADG	SC	REA	Rea/Wt	IMF	
74	346	1087	3.16	35.5				
1	0.92	1.09	0.81					



47	NMSU 0119	\$3,000	Registerable Brangus					
Born: 3/27/2020			SEN					--
Mr PB Redbull 521/09								
NMSU REDBULL 7076								
Miss NMSU 9054 5105								
Brinks Bright Side 604L11								
Ms Southern Brightside 415W7								
Ms Brinks stinger 415P41								
CED	BW	WW	YW	Milk	SC	REA	IMF	
BW	adj. WW	WW	ADG	SC	REA	Rea/Wt	IMF	
79	372	913	3.75	34				
1.07	0.99	0.91	0.96					

