

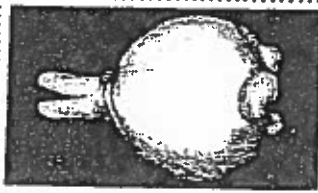
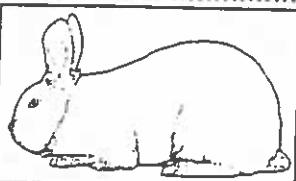

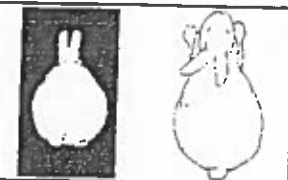




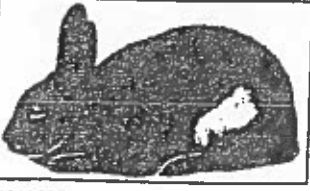



Use this poster in conjunction with Faults and Disqualifications situation/task statement, Faults and Disqualifications image diagram cards, Faults and Disqualifications identification tags, and Faults and Disqualifications description tags.



# Selection and Evaluation Faults and Disqualifications

Disqualification	Fault
 <p><b>Unmatched Toenails</b> Colored toenail on a white breed - or - White toenail on a dark-colored breed</p>	 <p><b>Stained Coat</b> Urine and/or manure stains on fur</p>
 <p><b>Wry Tail</b> Abnormal tail - bent, carried, or twisted permanently to one side Corkscrew tail with one or more turns</p>	 <p><b>Low in Shoulders</b> Shoulder depth is lacking and fails to balance with the hindquarters</p>
 <p><b>Ear Canker</b> Inflamed, scabby condition deep inside the ear - caused by an infection of the ear canal by ear mites</p>	 <p><b>Narrow in Shoulders</b> Shoulder width is "pinched" and fails to balance with the hindquarters</p>
 <p><b>Malocclusion</b> Teeth with lower incisors extending in front of the upper incisors or meeting with no overlap</p>	 <p><b>Stray Hairs</b> White hairs in colored fur</p>
 <p><b>Wry Neck</b> Carriage of the head to one side at an angular plane, instead of a normal carriage in a vertical plane</p>	 <p><b>Cow-Hocked</b> Hind legs that turn inward at the hocks, causing the toes to turn outward from the body</p>
 <p><b>Foreign Color Patch</b> White spot in colored area of the fur coat - or - Colored spot in white area of the fur coat</p>	 <p><b>Molt</b> Act of shedding or changing fur</p>



Exploratory Learning: Educational Program  
Graphics property of Curriculum Materials Service

Product distribution through: the Curriculum Materials Service



Use these copy cards in conjunction with Faults and Disqualifications situation/task statement, Faults and Disqualifications image diagram cards, Disqualifications identification tags, and Disqualifications description tags.



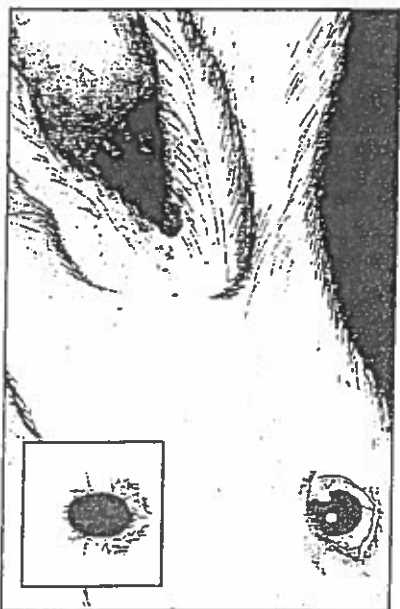
### Unmatched Toenails

**Faults and Disqualifications** - Disqualification  
Exploratory Learning: Education Program  
Product distribution through the Curriculum Materials Service



### Wry Tail (Screw Tail)

**Faults and Disqualifications** - Disqualification  
Exploratory Learning: Education Program  
Product distribution through the Curriculum Materials Service



### Ear Canker (Ear Mite Infestation)

**Faults and Disqualifications** - Disqualification  
Exploratory Learning: Education Program  
Product distribution through the Curriculum Materials Service



### Malocclusion (Buck or Wolf Teeth)

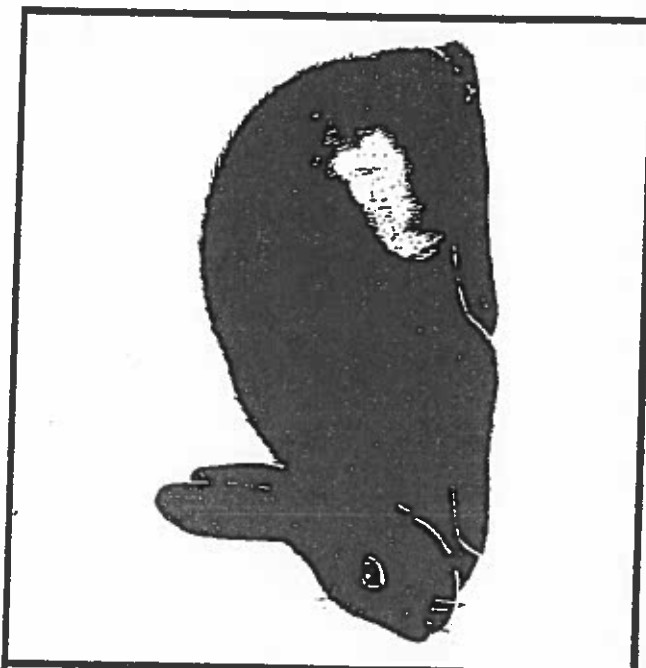
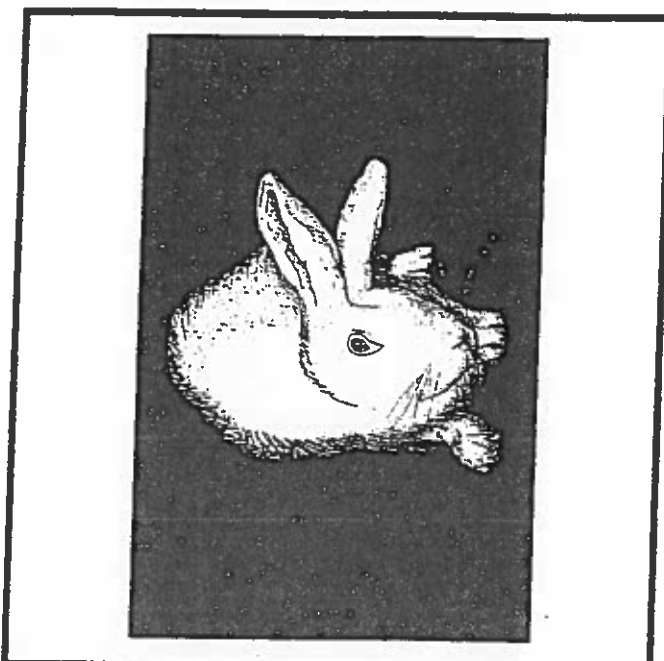
**Faults and Disqualifications** - Disqualification  
Exploratory Learning: Education Program  
Product distribution through the Curriculum Materials Service




# RABBIT

## LEARNING LABORATORY KIT

~~Use these copy cards in conjunction with Faults and Disqualifications situation/task statement, Faults and Disqualifications image diagram cards, Disqualifications identification tags, and Disqualifications description tags.~~




 **RABBIT**  
LEARNING LABORATORY KIT

**Wry Neck**

---

*Faults and Disqualifications* - Disqualification  
Exploratory Learning: Education Program  
Product distribution through the Curriculum Materials Service

 **RABBIT**  
LEARNING LABORATORY KIT

**Foreign Color Patch**

---

*Faults and Disqualifications* - Disqualification  
Exploratory Learning: Education Program  
Product distribution through the Curriculum Materials Service



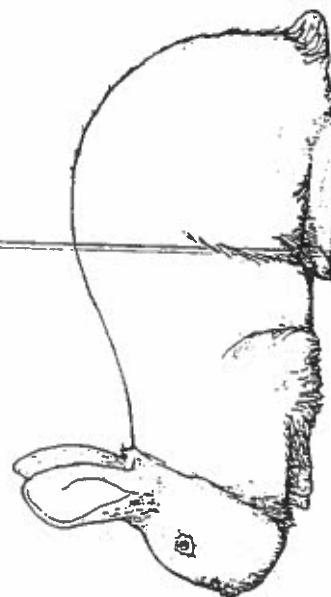
Use these copy cards in conjunction with Faults and Disqualifications situation/task statement, Faults and Disqualifications image diagram cards, Faults identification tags, and Faults description tags.



**RABBIT**  
LEARNING LABORATORY KIT

**Stained Coat**  
*(Hutch Stain)*

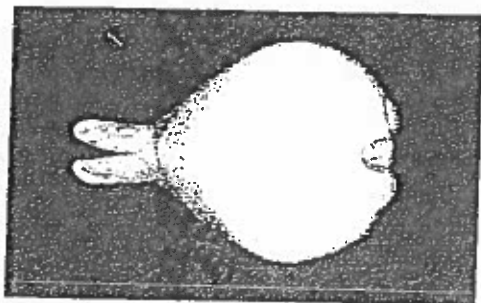
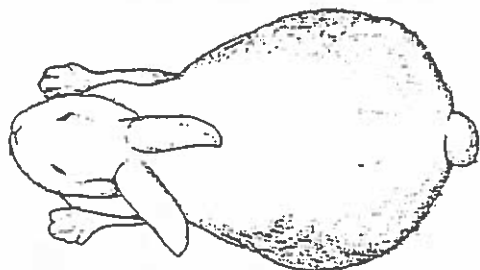
**Faults and Disqualifications - Fault**  
Exploratory Learning: Education Program  
Product distribution through the Curriculum Materials Service



**RABBIT**  
LEARNING LABORATORY KIT

**Low in Shoulders**

**Faults and Disqualifications - Fault**  
Exploratory Learning: Education Program  
Product distribution through the Curriculum Materials Service



**RABBIT**  
LEARNING LABORATORY KIT

**Narrow in Shoulders**

**Faults and Disqualifications - Fault**  
Exploratory Learning: Education Program  
Product distribution through the Curriculum Materials Service



**RABBIT**  
LEARNING LABORATORY KIT

**Stray Hairs**

**Faults and Disqualifications - Fault**  
Exploratory Learning: Education Program  
Product distribution through the Curriculum Materials Service





## BODY TYPE PROFILES

### GROUPS

**Semi Arch:** American, Beveren, English Lop, Flemish Giant, and Giant Chinchilla.

**Compact:** American Fuzzy Lop, English Angora, Standard Chinchilla, Dutch, Dwarf Hotot, Florida White, Havana, Holland Lop, Jersey Wooly, Lilac, Mini Lop, Mini Rex, Netherland Dwarf, Polish, and Silver.

**Commercial:** French Angora, Giant Angora, Satin Angora, Blanc de Hotot, Champagne d'Argent, Californian, Cinnamon, American Chinchilla, Crème d'Argent, French Lop, Harlequin, New Zealand, Palomino, Rex, American Sable, Satin, Silver Fox, and Silver Marten.

**Cylindrical:** Himalayan

**Full Arch:** Belgian Hare, Britannia Petite, Checkered Giant, English Spot, Rhinelander, and Tan



**SEMI - ARCH TYPE:** Animals are longer in body and have a well defined rise starting at or near the back of the shoulders, and continuing to round over the back and hips to the base of the tail. High point of the rise should occur at the top of the hips. The side profile is to be tapered from the hindquarters through to the shoulders.

Animals are to be posed with the front feet directly under the eyes and the toes of the rear feet aligned with the front of the hips. Some breeds may be allowed to move naturally after initial pose, to better evaluate specific type features.

**COMPACT TYPE:** Animals are lighter in weight and shorter in body length than animals of commercial type. Some breeds will have only a slight rise in the top line due to the depth of shoulders being slightly lower than the depth over the hips. The side profile may be tapered or of equal width from hips to shoulders, as specified in the individual breed standard.

Animals are to be posed with the front feet directly under the eyes and the toes of the rear feet aligned with the front of the hips. Posing in an excessively "tucked" position or allowing animals to move about the table is undesirable and strongly discouraged.

32



**COMMERCIAL TYPE:** Animals are of medium length, with depth of body equaling width of body throughout. The high point of the top line should be over the hips. The side profile will taper from hindquarters through to the shoulders. Fullness of body and firmness of flesh are important qualities.

Animals are to be posed with front feet directly under the eyes and the toes of the rear feet aligned with the front of the hips. Posing in a tucked up or stretched out position is inappropriate.

**CYLINDRICAL TYPE:** Animals are to show a straight top line with no arch or rise. Side profile is to show no taper. The front feet are to be even with the eyes and the body stretched out with forelegs and hocks flat on the table. See Himalayan breed standard.

**FULL ARCH TYPE:** Animals are to have an arch starting at the nape of the neck and continuing in a smooth, unbroken line over the shoulders, loin, hips, and finishing by rounding to the base of the tail. Most breeds will show more depth than width of body. The side profile will taper from the hindquarters through to the shoulders.

All breeds should be allowed to move naturally to evaluate type, except the Britannia Petite, which is to be posed.

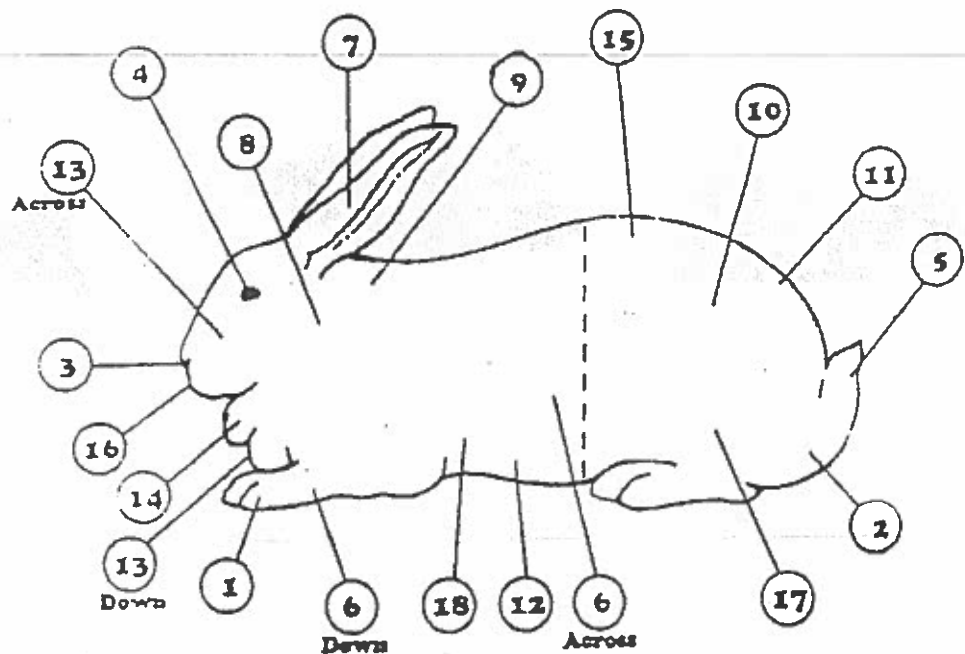
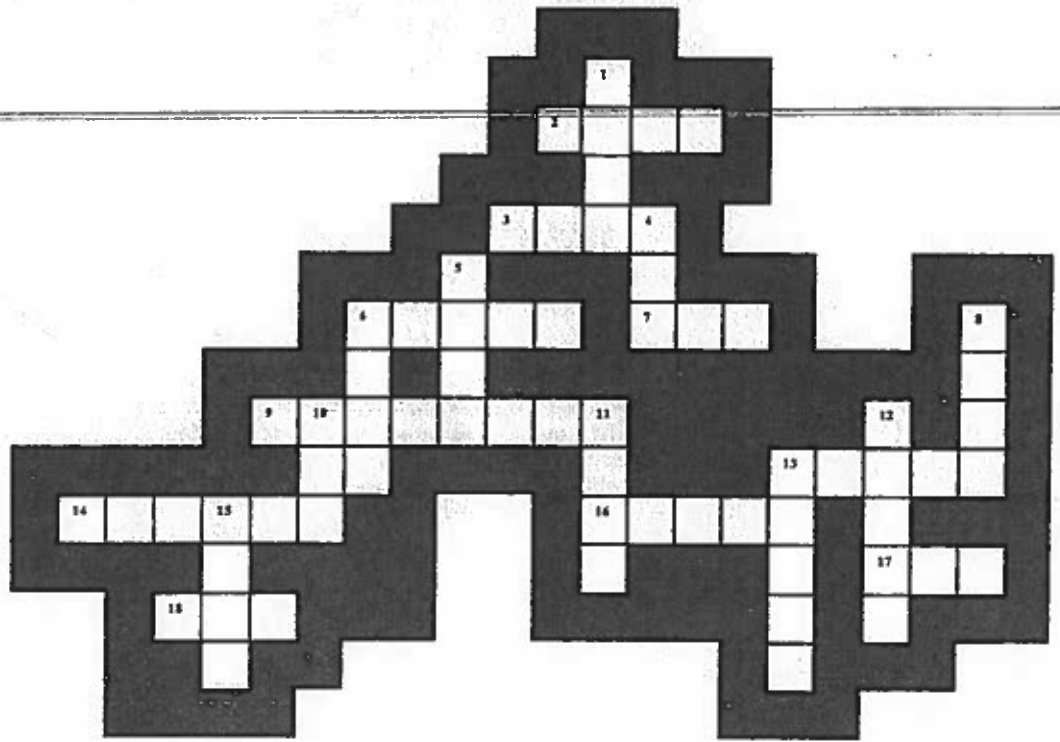
33

Wyoming

4-H

12201D-03

# Parts of a Rabbit



Parts to be used:

- |        |       |      |       |          |
|--------|-------|------|-------|----------|
| Belly  | Ear   | Hip  | Mouth | Rump     |
| Cheek  | Eye   | Hock | Neck  | Shoulder |
| Chest  | Flank | Leg  | Nose  | Tail     |
| Dewlap | Foot  | Loin | Rib   | Toes     |