



# Breeds of Sheep

NORTHEASTERN AGRICULTURAL EDUCATION

MR. CAFFEE

# Cheviot



- ▶ Originated in Scotland
- ▶ Resistant to cold, windy conditions
- ▶ White, wool free faces
- ▶ Long wool type
- ▶ Wool has a helical crimp
- ▶ Tend to be resistant to worms and footrot

# Columbia

- ▶ Developed by the US Department of Ag
- ▶ Developed to thrive on Western ranges
- ▶ Large Breed
- ▶ Produce medium wool and large amounts of meat



# Dorper

- ▶ Originated in South Africa
- ▶ Meat Breed
- ▶ Shed wool in the summer time.
- ▶ With stands hot climates.





# Dorset

- ▶ Originated in Europe
- ▶ Medium-sized breed with high quality, white wool
- ▶ Most popular white-faced breed in the United States
- ▶ Horned and polled varieties exist



# Finnsheep

- ▶ Originated in Finland
- ▶ No wool on the head and legs.
- ▶ Known for producing triplets and quadruplets
- ▶ Small frame



# Hampshire



- ▶ Originated in Hampshire, England
- ▶ Black face and legs
- ▶ Mild demeanor
- ▶ Unbroken wool cap should extend from the neck over the forehead

# Merino

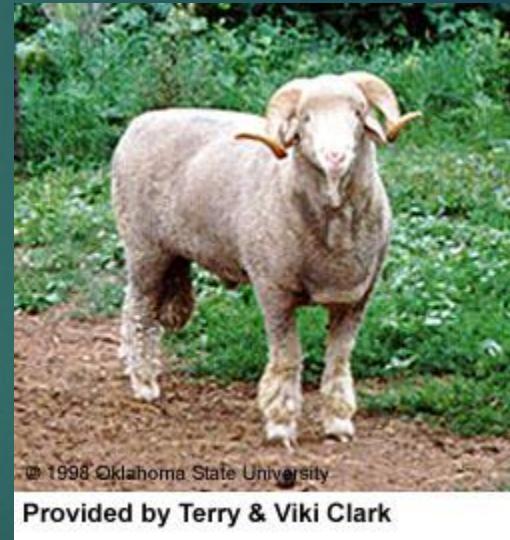
- ▶ Originated in Spain
- ▶ Primarily a wool breed
- ▶ White-faced
- ▶ High quality wool used in the textile industry





# Rambouillet

- ▶ Originated in France
- ▶ Developed from the Spanish merino.
- ▶ White in color, large framed, horned.



# Romney

- ▶ Originated in England
- ▶ The Romney is in general an open-faced breed with long wool that grows over the legs in full.
- ▶ Nose and feet are black.



# Southdown



- ▶ Developed in England
- ▶ Well suited to farm flock production
- ▶ Gray face with white body
- ▶ Adapted to wet conditions

# Suffolk

- ▶ Originated in England
- ▶ Most popular breed in the US today
- ▶ Produce large amounts of meat
- ▶ White with black faces and legs

