

The background features a stylized mountain range. The upper portion consists of several overlapping mountain peaks in various shades of green, from light to dark. A horizontal band of bright orange with a fine, grainy texture separates the green mountains from the bottom. The bottom portion of the image is a solid dark green.

# Hemp

## What to Know Before You Grow

By Beyond Organica

# Hemp vs. Marijuana

- It's the same plant – Cannabis

# Hemp vs. Marijuana

- It's the same plant – Cannabis
  - Differentiating factor is THC level

To be legally considered “Hemp”  
0.3% THC or less



# THC vs. THCa

THC = Tetrahydrocannabinol

- THC =  $\Delta$ -9 THC
  - the psychoactive cannabinoid

# THC vs. THCa

THC = Tetrahydrocannabinol

- THC =  $\Delta$ -9 THC
  - the psychoactive cannabinoid
- THCa (tetrahydrocannabinolic acid)
  - Not psychoactive

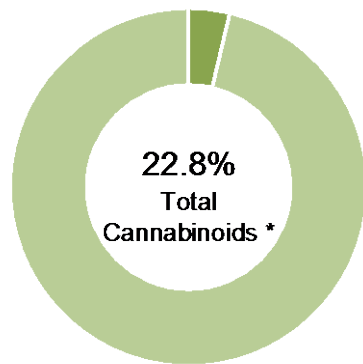
# THC vs. THCa

THC = Tetrahydrocannabinol

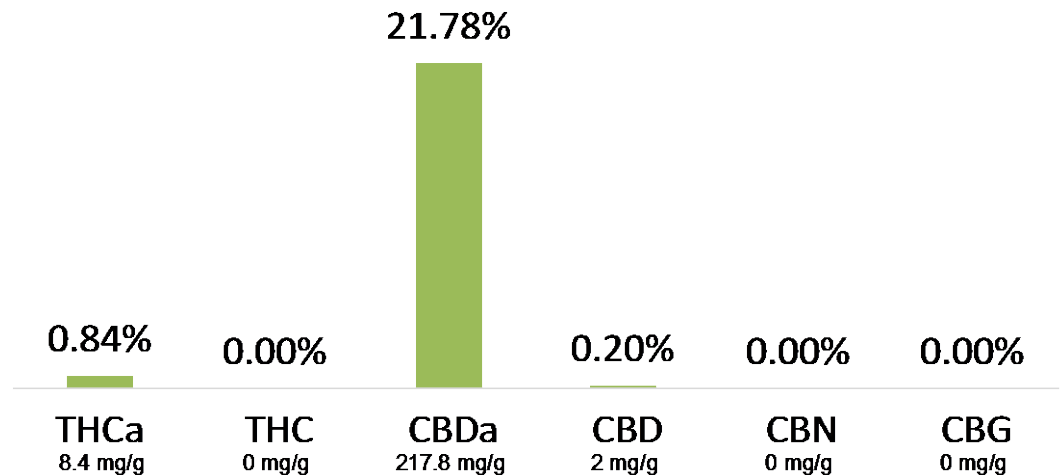
- THC =  $\Delta$ -9 THC
  - the psychoactive cannabinoid
- THCa (tetrahydrocannabinolic acid)
  - Not psychoactive
- When THCa is heated (decarboxylated) it converts to  $\Delta$ -9 THC
  - Conversion is  $\text{THCa} \times .877 = \text{Total Potential THC}$

# COA of Berry Blossom

## CANNABINOID PROFILE



■ Total Potential THC 0.74% \*\*  
■ Total Potential CBD 19.3% \*\*



$$(\text{THCa} \times .877) + \text{THC} = \text{Total THC}$$

$$(0.84 \times .877) + 0.0 = 0.73668$$



# Seed • Seedlings • Clones

**Seed** – may be male or female. Generally people want ‘feminized seed’, but you may not

**Seedlings** – also maybe male or female

**Clones** – should be female. Saves you from walking your field, culling male plants



# Pollen & Male Plants

- Pollen travels – Is there other hemp being grown in your area?
- Pollen will produce seed in your female plants.
- Male Plants produce pollen.
  - Unless you are producing a seed crop, you don't want these around.
  - If you do want to grow male plants, keep them contained and away from your females plants.

# Day-Length

- Cannabis is day-length sensitive
  - May 1<sup>st</sup> – earliest to plant seed outside
  - June 1<sup>st</sup> – best time for clones to go in the ground
  - August 10<sup>th</sup> – plants will start to flower (as days get shorter)
  - September 21<sup>st</sup> / fall equinox – plants will be in full flower

# Misconceptions

Hemp doesn't use much water.

Hemp will improve your soil.

# Water, Soil & pH

- Do you have the correct kind of water rights?



# Water, Soil & pH

- Do you have the correct kind of water rights?
- It's a good idea to have your soil and water tested – know what you're starting with.

# Water, Soil & pH

- Do you have the correct kind of water rights?
- It's a good idea to have your soil and water tested – know what you're starting with.
- Cannabis likes water pH between 5.6 and 6.5
  - This is important for young plants. Older plants can handle a wider range.

# Feeding

If you're growing hemp for CBD, you're growing for weight.

Given the cost of hemp seeds and clones, lab testing and labor, you're going to want to feed your crop to get the highest yield.

# Feeding

If you're growing hemp for CBD, you're growing for weight.

Given the cost of hemp seeds and clones, lab testing and labor, you're going to want to feed your crop to get the highest yield.

- Will you make your own nutrients or buy them?



# Feeding

If you're growing hemp for CBD, you're growing for weight.

Given the cost of hemp seeds and clones, lab testing and labor, you're going to want to feed your crop to get the highest yield.

- Will you make your own nutrients or buy them?
- What can you spend per plant or per acre?

# Feeding

If you're growing hemp for CBD, you're growing for weight.

Given the cost of hemp seeds and clones, lab testing and labor, you're going to want to feed your crop to get the highest yield.

- Will you make your own nutrients or buy them?
- What can you spend per plant or per acre?
- Will you attempt to be organic?

# Pests & Disease

- Mice or squirrels may eat seed out of the ground

# Pests & Disease

- Mice or squirrels may eat seed out of the ground
- Prairie dogs may eat small transplants



# Pests & Disease

- Mice or squirrels may eat seed out of the ground
- Prairie dogs may eat small transplants
- Aphids & Mites

# Pests & Disease

- Mice or squirrels may eat seed out of the ground
- Prairie dogs may eat small transplants
- Aphids & Mites
- Powdery Mildew (PM) & Bud Rot

# Pests & Disease

- Mice or squirrels may eat seed out of the ground
- Prairie dogs may eat small transplants
- Aphids & Mites
- Powdery Mildew (PM) & Bud Rot
- Thieves

# Lab Testing

- As CBD levels increase, so does THC
- Don't let your crop go 'hot' – over the legal limit of THC
- Cannabinoid and terpene profiles are valuable to know
- Take samples from top and bottom buds of plants
- COA – Certificate of Analysis



# Harvesting & Beyond

- How will you harvest this crop?

# Harvesting & Beyond

- How will you harvest this crop?
- Will you have the labor available when you need to harvest?

# Harvesting & Beyond

- How will you harvest this crop?
- Will you have the labor available when you need to harvest?
- Where will you dry it? Do you have enough space?

# Harvesting & Beyond

- How will you harvest this crop?
- Will you have the labor available when you need to harvest?
- Where will you dry it? Do you have enough space?
  - Maintaining a temperature range of 60 - 70°F
  - Humidity between 45 - 55%
  - Leave fans running



# Harvesting & Beyond

- How will you harvest this crop?
- Will you have the labor available when you need to harvest?
- Where will you dry it? Do you have enough space?
  - Maintaining a temperature range of 60 - 70°F
  - Humidity between 45 - 55%
  - Leave fans running
- How will you store it while you wait for a buyer?

# What do you want to produce?

- Biomass

- \$2 to \$4.50 ppp (CBD percentage point/pound)
- EXAMPLE: If your biomass tests at 10% CBD & you can sell it for \$3 ppp, you'll make \$30 per pound.

# What do you want to produce?

- Biomass

- \$2 to \$4.50 ppp (CBD percentage point/pound)
- EXAMPLE: If your biomass tests at 10% CBD & you can sell it for \$3 ppp, you'll make \$30 per pound.

- Extracted CBD Oil

- Full Spectrum, Broad Spectrum, Distillate, Isolate
- \$3000 to \$6000 per kilo



# What do you want to produce?

- Biomass

- \$2 to \$4.50 ppp (CBD percentage point/pound)
- EXAMPLE: If your biomass tests at 10% CBD & you can sell it for \$3 ppp, you'll make \$30 per pound.

- Extracted CBD Oil

- Full Spectrum, Broad Spectrum, Distillate, Isolate
- \$3000 to \$6000 per kilo

- Smokable Flower

- \$100 to \$400 per LB for high CBD, trimmed flower



# What do you want to produce?

- Biomass
  - \$2 to \$4.50 ppp (CBD percentage point/pound)
  - EXAMPLE: If your biomass tests at 10% CBD & you can sell it for \$3 ppp, you'll make \$30 per pound.
- Extracted CBD Oil
  - Full Spectrum, Broad Spectrum, Distillate, Isolate
  - \$3000 to \$6000 per kilo
- Smokable Flower
  - \$100 to \$400 per LB for high CBD, trimmed flower
- Value Added Products
  - Tinctures, salves, etc.

# Tolling & Selling

- Extractors will 'toll' your biomass into oil.
  - Some will toll in exchange for a percentage of your oil.
  - Some will charge for tolling but you'll get all of your oil back.
  - Some will buy your biomass outright.

# Tolling & Selling

- Extractors will 'toll' your biomass into oil.
  - Some will toll in exchange for a percentage of your oil.
  - Some will charge for tolling but you'll get all of your oil back.
  - Some will buy your biomass outright.
- Use a Broker – they will get a commission.