



Livestock Nutrition Laboratory

About Us...

We are a well equipped livestock nutrition laboratory that works within the Department of Animal and Range Sciences at New Mexico State University. In addition to research and teaching, we also work with New Mexico producers to provide timely, cost effective, and accurate feed and forage analysis options. We work to provide you the information you need to make decisions concerning the nutritional demands of the livestock in your care.

Sampling Instructions

Pasture Forage

- Take several random samples per pasture (at least three samples, 1 square foot in size each) . Using scissors or garden shears, cut forage as close to the ground as possible. Combine all samples taken from the same pasture in a paper lunch sack or gallon plastic bag for submission.

Contact Information

Lyndi Bryant– Livestock
Nutrition Lab Coordinator

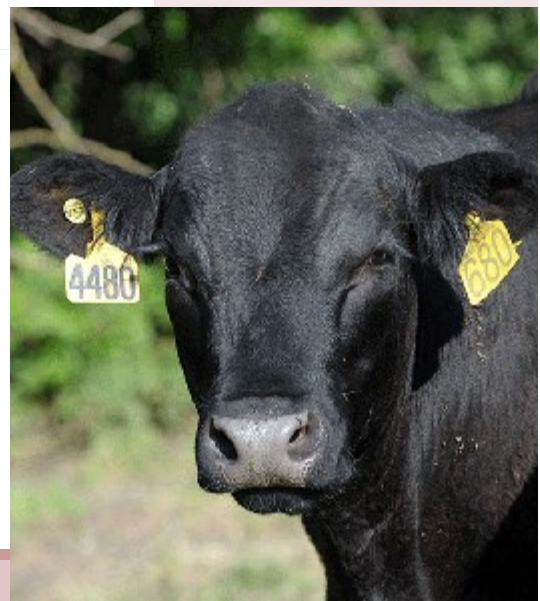
Email: lowensby@nmsu.edu

Phone: (575)646-4316

Website: [aces.nmsu.edu/
livestocknutritionlab](http://aces.nmsu.edu/livestocknutritionlab)

Contents

- Sampling Instructions
- Sample Submission Instructions
- Sample Submission Form





Questions?

If you have further questions or need assistance in, please don't hesitate to contact:

Lyndi Bryant

Nutrition Lab Coordinator

Phone: (575)646-4316

Email:

lowensby@nmsu.edu

We are more than happy to help you in anyway we can. You will always speak to a live person and we endeavor to respond within 24 hours at the very least.

Thank you for considering our laboratory services. We look forward to working with you!

Sampling Instructions Continued...

Baled Hay

- Samples must be taken from the center of several bales (at least three). This can be done using a forage probe that fits on the end of a drill or bales can be broken open and a sample can be taken from a center flake.

Grain

- Take a handful of feed from at least three different sacks of the same grain. Combine all samples taken in a plastic gallon back for submission.

Payment Options

- **Check** made out to “*New Mexico State University*” & mailed with samples
- Complete **credit card form** attached to sample analysis form & mailed with samples
- **Call (575)646-2514** to submit credit card information

Sample Submission Instructions

Complete the sample submission form on the following page. Enclose payment (check or credit card form).

Send all samples to the livestock nutrition lab in paper lunch sacks or Ziploc plastic bags. Label the bag with the sample name you would like to see on the analysis report.

Send samples, sample submission form, and payment to:

NMSU– Animal & Range Sciences
Attn: Lyndi Bryant
2980 S. Espina St., Knox Hall 202
Las Cruces, NM 88003

Results will be reported as soon as analysis is completed. Results can be reported via mail, email, or phone based on your preference.